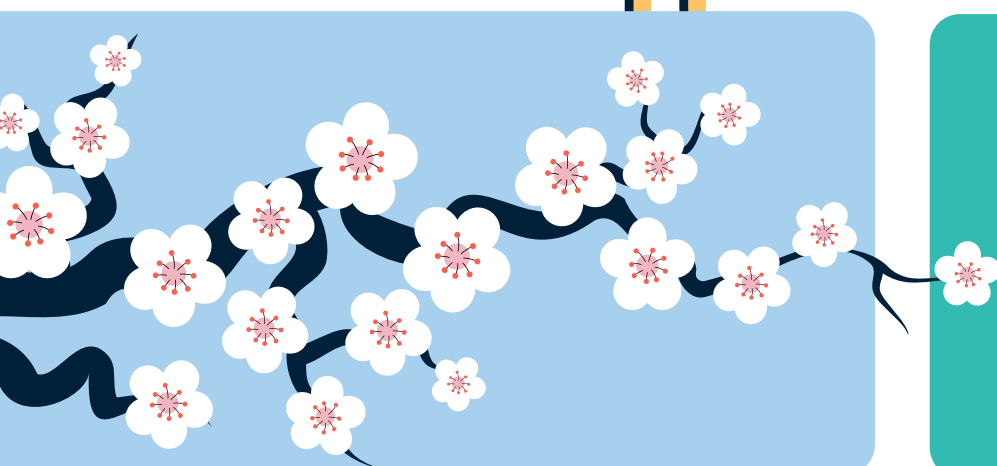
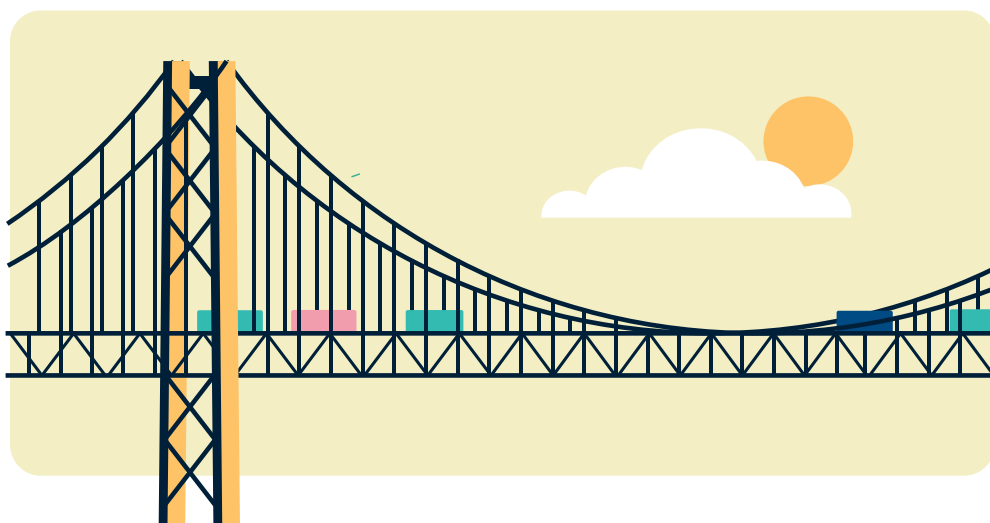




# mla'25



BRIDGING  
TRADITION &  
INNOVATION



APRIL 29 - MAY 2  
#MLANET25  
PITTSBURGH

OFFICIAL PROGRAM



# Contents

MLA Statement of Appropriate Conduct	4 – 5
Welcome Letters, Thank You Volunteer Leaders	6 – 9
General Information	10 – 15
Featured Speaker	16
Schedule at a Glance	18 – 19
Convention Center Map	20 – 21
Continuing Education Courses	22
MLA Research Training Institute Posters	23
Contributed Content	
Immersion Sessions.....	24 – 27
Papers.....	28 – 32
Lightning Talks.....	33 – 35
Posters .....	36 – 41
Symposia	
Collection Development.....	42 – 43
Data Management & Services.....	43 – 44
Leadership & Management .....	45
Exhibitor Sessions, Exhibit Hall Map, Exhibitor List	46 – 49



## Follow Us on Social Media



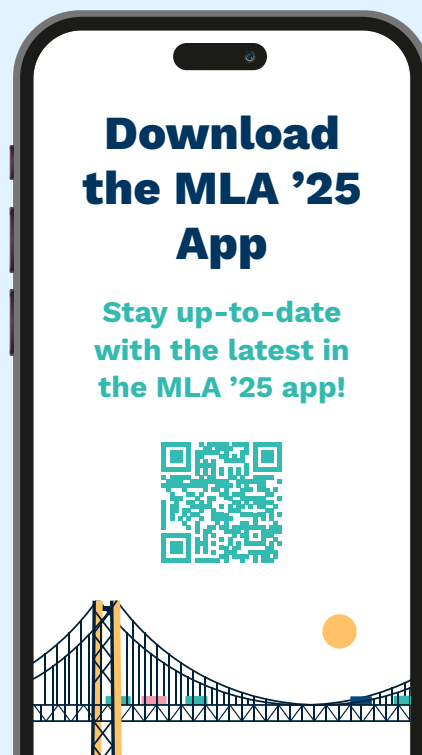
@MedicalLibraryAssn



@medlibassn.bsky.social



@medical-library-association



# Thank You Sponsors

## GOLD SPONSOR

---



Health

## SILVER SPONSOR

---



## BRONZE SPONSORS

---



# MLA Statement of Appropriate Conduct

This statement applies to all Medical Library Association (MLA)–sponsored and officially recognized professional and educational activities, including, but not limited to, conferences, meetings, workshops, online forums, social media, continuing education, and all means of communication between members and nonmembers relating to MLA activities.

It applies to all MLA members, nonmembers, invited guests, speakers, moderators, instructors, exhibitors, staff, and all others who participate in an MLA activity or event.

## 1. Values and Beliefs

MLA seeks to ensure that the following core values and professional behaviors are entwined throughout all its programs and services:

- an open, inclusive, and collaborative environment within the association in all its activities and events, and outside the profession;
- diversity, equity, and inclusion in professional practice, leadership of health sciences libraries, and information professionals;
- advancement and support of accessibility for all stakeholder groups; and irreproachable ethical standards (Code of Ethics for Health Sciences Librarianship) that call for health sciences librarians to conduct all professional relationships with courtesy and respect.

In MLA's effort to provide an environment of mutual human respect in which diverse participants may learn, network, and enjoy their interactions with colleagues, we recognize that we have a shared responsibility to create and sustain that environment for the benefit of all, consistent with these core values.

### Fairness, Representation, and Belonging

MLA interprets fairness, representation, and belonging as:

- **Fairness** ensures that individual differences are considered in creating impartial processes, equitable access to opportunities, and just outcomes for all, status, and religion;

- **Representation** acknowledges the variety of backgrounds, experiences, and perspectives that people bring, recognizing and respecting differences such as socioeconomic status, political beliefs, language, culture, nationality, age, ability status, religion, race and ethnicity, gender, and sexual orientation.
- **Belonging** fosters an environment where all individuals are treated with respect, valued for their unique skills and perspectives, have access to opportunities and resources, feel included, and can actively contribute to the association's success.

### MLA Commitment

MLA is committed to:

- ensuring that all individuals are treated fairly and respectfully; are intentionally valued for their distinctive skills, experiences, and perspectives, have quality access to resources and opportunities, feel a sense of belonging, and can contribute fully to MLA's success;
- providing a harassment-free environment for everyone, regardless of race and ethnicity, gender and gender identity, sexual orientation, socioeconomic status, political beliefs, language, culture, nationality, age, ability status, and religion; and
- protecting diversity in the free expression of ideas.

Taken cumulatively, the values and beliefs delineated in MLA policy describe conduct based on a firm belief in the value of civil discourse and the free exploration of competing ideas and concepts—with a fundamental respect for the rights, dignity, and value of all individuals.

## 2. Behaviors

Speakers, moderators, leaders, and participants are asked to frame discussions as openly and inclusively as possible and to be aware of how language and tone of voice, behavior, or images may be perceived by others. In the context of MLA policy and the professional practices of librarianship:

- critical examination of beliefs and viewpoints does not, by itself, constitute hostile conduct or harassment; and
- the use of sexual imagery or language in the context of a professional discussion might not constitute hostile conduct or harassment.

At face-to-face meetings, all participants are expected to observe these rules and behaviors in all meeting venues, including online, and during meeting social events. Meeting participants seek to learn, network, and have fun. Please do so responsibly and with respect for the right of others to do likewise.

The following individual behaviors are encouraged:

- be respectful
- be direct and professional
- be inclusive and seek diverse perspectives
- understand and value different ideas and opinions
- appreciate and accommodate similarities and differences
- lead by example
- keep discussions within the scope of the activity
- maintain professional dialogue and tone on all MLA media communication channels





- exercise your right to distance yourself from the person or situation (e.g., if it is not meaningful, if you feel unsafe or threatened, or if you feel your message is not being heard)
- silence cell phones and other electronic devices (when applicable)
- be present and attentive during the activity, and avoid side conversations or participating in activities that may be distracting to others
- be prepared and well-informed (read materials; ensure your information is accurate; when in doubt, check first)
- be mindful that most activities such as webinars, forums, and social media are recorded.

The following individual behaviors are specifically prohibited:

- engaging in harassment or intimidation, including sexual harassment or intimidation, such as unwelcome sexual attention, stalking (verbal, physical, or virtual), or unsolicited physical contact
- yelling at or threatening anyone (verbal, physical, in print, or online)
- posting messages that are defamatory, abusive, profane, threatening, or offensive
- engaging in personal attacks
- engaging in disruptive behavior that intimidates, disenfranchises, interrupts (an event, activity, or process) by causing a disturbance, or threatens the safety of an individual
- posting illegal materials
- posting copyrighted material without first obtaining permission of the copyright holder.

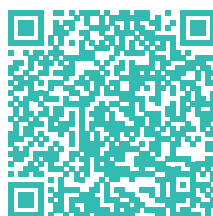
Participants who are asked to stop disruptive, hostile, or harassing behavior are expected to comply immediately.

### 3. Reporting and Investigation

MLA is committed to ensure you feel comfortable in reporting inappropriate behavior you experience or observe. If possible, first seek out the person of authority in the related context (e.g., chair; board liaison or staff liaison, if a committee; chair, if domain hub or caucus; convener, if online discussion; meeting management or MLA staff, if at a physical meeting; etc.). This may be an effective way to address the behavior locally or in the moment.

Alternatively, contact either the MLA executive director, the MLA president, or Chair of the Fairness, Representation, and Belonging Committee. This group of three (unless one or more individuals in the group are the subject of the inappropriate behavior) will lead the investigation, contact relevant individuals, gather all information needed, and take steps to resolve the situation with appropriate confidentiality.

**Submit a report online.**



### 4. Consequences and Resolution

Though all efforts will be made to seek a positive outcome where everyone can feel included and safe, incidents determined by MLA to violate MLA's code of conduct could result in one or more of the following consequences:

- being asked to stop their disruptive, hostile, or harassing behavior immediately
- being asked to make sincere efforts to increase awareness, such as participating in trainings about conflict management
- being removed, without reimbursement, from face-to-face conferences, meetings, or webinars; if appropriate, event security or local law enforcement may be contacted
- being excluded from online forums or other activities
- no awarding of MLA continuing education (CE) or Academy of Health Information Professionals (AHIP) credit
- terminating MLA membership, without reimbursement
- other actions deemed appropriate by MLA and/or required by law
- if appropriate, a follow-up report will be made to individuals who report being harassed.

# Welcome to Pittsburgh!

## President Welcome Letter

Dear Colleagues and Friends,

Welcome to the 2025 Annual Conference in the vibrant city of Pittsburgh, Pennsylvania! This year, we gather under the inspiring theme of “Bridging Tradition and Innovation,” a reflection of our commitment to honoring our rich history while embracing the future of our profession. As we come together, both in person and virtually, we celebrate the unique blend of tradition and innovation that defines our community. Pittsburgh, with its storied past and dynamic present, serves as the perfect backdrop for our conference. From its historic steel mills to its cutting-edge tech startups, the city embodies the spirit of our theme.

Our conference program is designed to offer a diverse array of sessions that cater to both the preservation of our foundational practices and the exploration of new innovative approaches. Whether it's during our traditional welcome reception or other engaging activities, we encourage you to engage with your peers, share your experiences, and build lasting relationships.

MLA '25 will look a little different this year with no McGovern Lecture, no NLM update, and no NLM PubMed Update. Our alternative programming will emphasize community sharing, peer support, and actionable solutions. It is important for us to support each other and give each other some grace. We hope you take part in these activities. MLA is committed to ensuring broad accessibility and support for its members.

The loss, underfunding, and neglect of essential government health databases, publications, and websites has significant negative impacts on our profession. Recent legislation poses a serious threat to the continuation of critical equity work by our members, efforts that have been a cornerstone of our profession for many years. This work has been a significant and valued part of our profession for a considerable time, and we are mindful of the impact these changes may have.

Medical and health librarians play a crucial role in ensuring access to evidence-based health information for education, research, patient care, and public health decision-making. In these volatile times and in some instances feelings of despair, I encourage perseverance and resilience in the face of adversity. I humbly remind you of the importance of maintaining hope and optimism in the pursuit of a better future. It is my hope that the community in MLA provides strength and support to get through the difficult times. Working together, supporting each other, and coming up with action plans and solutions can lead us in the right direction of advocacy and upholding our MLA values that all of us share.

With the 2025 National Program Committee, I extend my heartfelt gratitude to all our attendees, presenters, exhibitors, and sponsors. Together, we will bridge the gap between tradition and innovation, paving the way for a bright and exciting future.

Thank you for joining us, and I look forward to an inspiring and productive conference.



**Brenda Linares**

MLA President



## Welcome to MLA '25!

The National Planning Committee (NPC) is delighted to welcome you to the MLA '25 Annual Meeting!

This year's theme, "Bridging Tradition and Innovation," underscores the importance of honoring established practices while embracing forward-thinking solutions.

Whether you're attending virtually or in person, we invite you to immerse yourself in a dynamic conference experience. Engage with thought-provoking speakers, participate in interactive panel discussions, exchange ideas over community lunches, explore vendor exhibits, and make the most of networking opportunities throughout every session. Be sure to celebrate with us at the Hall of Exhibits reception!

The NPC has carefully designed a program filled with valuable content and ample opportunities to connect with colleagues. Based on your feedback, we've made strategic scheduling adjustments to maximize your conference experience. In addition to immersion sessions, paper presentations, lightning talks, and posters, MLA '25 will feature three symposia focusing on collection development, data-driven libraries, and value-driven impact.

Delivering the Janet Doe Lecture will be Jean P. Shipman, AHIP, FMLA. A distinguished leader in the field, Shipman has served in various roles, including Vice President of Global Library Relations at Elsevier, Executive Director of Knowledge Management at Spencer S. Eccles Health Sciences Library, and Director of the MidContinental National Training Office of the National Network of Libraries of Medicine.

For those attending in person, take time to explore Pittsburgh's vibrant offerings! The Local Assistance Committee has curated fantastic recommendations, from iconic landmarks like the Cathedral of Learning to unique activities like a self-guided public art walking tour. Enjoy the city's culinary scene with a pierogi tour or unwind at one of Pittsburgh's many craft breweries, distilleries, and happy hours. Want to blend in with the locals? Brush up on your Pittsburghese with the latest *MLAConnect* post—because "yinz" won't want to miss out!

Whether you're joining us virtually or in person, we can't wait to connect with you at MLA '25!



**Emily Brennan**

2025 National Planning  
Committee Cochair



**Mary Beth McAteer**

2025 National Planning  
Committee Cochair



# Thank You Volunteer Leaders

## National Programming Committee (NPC)

Emily Brennan, Cochair  
Mary Beth McAteer, Cochair  
Gisele Butera  
Katherine Downton  
Carrie Grinstead  
Sarah Katz  
Karina Kletscher  
Gail Kouame  
Erica Lake  
Brenda Linares  
Kimberly Powell  
Christina Seeger  
Lynn Warner  
Wanda Whitney

## Contributed Content Working Group

Emily Brennan, Cochair  
Mary Beth McAteer, Cochair  
Gisela Butera  
Katherine Downton  
Carrie Grinstead  
Sarah Katz  
Gail Kouame  
Kimberly Powell  
Christina Seeger  
Lynn Warner  
Wanda Whitney

## Local Assistance Committee (LAC)

Renae Barger, Cochair  
Barbara Epstein, Cochair  
Michael Balkenhol  
Carolyn Biglow  
Madelyn Glymour  
Tim Huang  
Michele Klein-Fedyshin  
Melissa Ratajeski  
Alexa Silverman  
Dana Thimons  
Sera Thornton  
Rose Turner

## 2025 Special Program Committee: Collection Development & Resource Sharing

Nicole Theis-Mahon, Chair  
Jason Burton  
Christy M. Hogan  
Liz Jenkins  
Janna Lawrence  
Emily Singley

## 2025 Special Program Committee: Leadership & Management

Meredith Solomon, Chair  
Brian Baker  
Michelle Knecht  
Angela Spencer  
Rachel Walden  
Wanda Whitney

## 2025 Special Program Committee: Data Management & Services

Margaret Henderson, Chair  
Lisa Federer  
Shelley Ivary  
Amy Lyons  
Nakia Woodward

## Conference Planning Staff

Katelyn Arnold  
Kevin Baliozian  
Fiona Brueckman  
Debra Cavanaugh  
Kate Corcoran  
Alexa DeSerrano  
Aubrey Dockery  
Barry Grant  
Tomi Gunn  
Kate Hernandez  
Hannah Jeon  
Brooke Jordan  
Stacy Kyle  
Maria Lopez  
Nicki Mehall  
Erin Orlandini  
Kasey Porec  
Kristi Salyards  
Jim Westwood



# Take Your Career to the Next Level with MLA Specializations



## Systematic Review Services Specialization

Now you can gain the skills to play a central role in review projects. Learn the fundamentals of systematic reviews and how to collaborate with teams to implement search strategies, negotiate recognition for your contribution, develop effective and replicable search strategies, and more.



## Consumer Health Information Specialization

Get training in providing health information services to consumers while providing skills and knowledge needed to become a confident, expert provider of health information to your community.



## Data Services Specialization

Boost your career with training in providing quality data services to researchers and students. Develop skills in managing research data, providing guidance on data management best practices, appraising data collection practices, and developing data services.

Achieve a new level of expertise in one of these health information fields. Each program requires the completion of an approved curriculum of courses. Courses and other educational offerings are MLA-approved and developed for each specialization.

**Visit [mlanet.org](https://mlanet.org)**



# General Information

## Accessibility Information

### Access to and within David L. Lawrence Convention Center

All MLA '25 sessions will be held at the LEED® GOLD Certified David L. Lawrence Convention Center, 1000 Fort Duquesne Blvd.

### Service Animals

Service animals that are specifically trained to provide assistance to an individual with a disability are welcome in the David L. Lawrence Convention Center. All service animals must remain on a leash or in a harness, and be under control of the guest with a disability or a designee.

### Convention Center Riverfront Plaza Access

The Convention Center Riverfront Plaza is a portion of the Three Rivers Heritage Trail which connects Point State Park to the Strip District. The Plaza is accessible via a ramp located at the crosswalk on 10th Street and Fort Duquesne Blvd.

### Westin Hotel Access

Visitors can gain access to the hotel walkway from the first and second floors of the parking garage, or on the third floor of the DLCC. Each side of the hotel walkway is equipped with automatic doors.

### Medical Services Stations

The emergency medical service station is located in the First Aid Office on the second hall towards the back of Exhibit Hall B.

### Nursing Mothers Areas | 313

On the second level of the DLCC is a dedicated space for parents of newborns/infants to be used as a private space for nursing mothers. Please ask an MLA staff member at the registration desk for the key.

### Onsite Accessibility Issues

Should you encounter an accessibility issue at MLA '25, please contact meeting staff at the Registration Desk so they can resolve the issue.

### Wheelchair or Electric Scooter Needs

Attendees who require a wheelchair or electric scooter for use during the annual conference should indicate accessibility needs during the conference registration process. Staff will work with you to reserve your preferred mobility device during the conference.

If you have requested accommodations during the registration process, staff will be in touch with you ahead of your arrival to ensure access to your preferred mobility device; or please check in at the MLA '25 Registration Center

### Be Well MLA

Join us for an open forum with the Be Well Community to explore ways to prioritize wellness in our work and lives. This is the final session of the Be Well Wednesdays webinar series and we'll cover a variety of topics.

- **Wednesday, April 30, 2025**  
10:30 - 11:45 a.m.

### Recharge Room | 328

Take some downtime to recharge your internal battery! Zone out, stretch, nap, meditate, walk a maze, color, work on a puzzle, rake some sand, or have another relaxing moment in this tech-free quiet room.

The DLCC has partnered with KultureCity® to assist and accommodate guests with sensory needs. Sensory bags containing noise-canceling headphones, fidget tools, feeling thermometer, sunglasses and verbal cue cards are available. A Quiet room is available on Level 2, Concourse A, and Headphone Zones are clearly marked. You can also download the free KultureCity® app to view the available sensory tools and the social story detailing the items featured at the DLCC.

### Hours:

- **Wednesday, April 30, 2025**  
7:00 a.m. – 6:00 p.m., eastern time



- **Thursday, May 1, 2025**  
7:00 a.m. – 7:00 p.m., eastern time

- **Friday, May 2, 2025**  
7:00 a.m. – Noon, eastern time

### Lost and Found

Please bring any found items to the MLA '25 Registration Center in Level 3 Regional Gallery

### Coat and Luggage Check

For those attendees who prefer to leave the conference directly from the convention center, a coat and luggage check will be available on Friday, May 2, in Room 312.

### Transportation

The DLCC is within walking distance of both hotels including the Westin Pittsburgh (0.2 miles) and Omni William Penn (0.4 miles).

### Parking at the David L. Lawrence Conference Center

The DLCC has a 700-car parking garage attached to the building. Numerous accessible parking options are on the first level of the garage, with close access to the ballroom entrance and East Lobby entrance.

## Registration Center Floor 3 Foyer

### Registration Center Hours

- **Tuesday, April 29, 2025**  
9:00 a.m. – 6:00 p.m., eastern time

- **Wednesday, April 30, 2025**  
7:00 a.m. – 7:00 p.m., eastern time

- **Thursday, May 1, 2025**  
7:00 a.m. – 6:00 p.m., eastern time

- **Friday, May 2, 2025**  
7:00 a.m. – 3:00 p.m., eastern time

### Badge pickup

Your first stop for MLA '25 onsite should be the Registration Center in the Level 3 Regional Gallery to pick up your

- Meeting bag
- Badge
- Ribbons

## Guests at MLA '25

### Adult Guests

Adult guests may purchase a pass to the Hall of Exhibits at the MLA '25 Registration Center. If guests would like to attend programs, plenary sessions, or social events, they should purchase a full meeting registration.

### Children

Are you attending MLA '25 with accompanying children? While we will do our best to accommodate the needs of child caregivers and attendees, please let us know during registration if you plan to attend MLA '25 with accompanying children.

- Children over 6 months must always be accompanied by a caregiver.



- Children under 6 months may attend under the care of a “baby-wearing” caregiver or in a stroller; for the safety of children and other attendees, stroller-age children must remain in strollers when in the DLCC. Strollers are not allowed in the Exhibit Hall.
- We ask caregivers to, as necessary, step out of sessions to soothe children and mitigate any disturbance or minor interruption. If attending a session with a child, please find seating near an exit.
- A nursing mothers area is available on the second level of the DLCC. Please ask an MLA staff member at the registration desk for the key.
- A staff member will be in touch with you to understand other childcare needs you may have.

All accompanying children must have a registration and badge. Complimentary badges will be available at the MLA '25 Registration Center.

### Hall of Exhibits | Hall B

#### Hall of Exhibits Hours

- **Wednesday, April 30, 2025**  
7:30 – 11:45 a.m., eastern time  
1:30 – 7:00 p.m., eastern time
- **Thursday, May 1, 2025**  
8:00 a.m. – 6:00 p.m., eastern time





# General Information

## About Pittsburgh

### Hospitality Center | Level 3 North Foyer

Make the Local Assistance Committee (LAC) Hospitality Center your next stop for maps and information about local attractions. Local Assistance Committee members and other area experts will be on hand to answer questions. You are also encouraged to use the MLA '25 meeting website or app to connect with other registrants.

Be sure to ask for dining recommendations and check the official MLA '25 Dining Guide. Scan the QR code on p.13 or on the back cover to access the official Dining Guide.

### Service Project

The LAC encourages your support to Street Medicine at the University of Pittsburgh for the 2025 Local Service Project. All donations are tax deductible.

Street Medicine at Pitt is a student-run interdisciplinary organization that strives to bring healthcare and social support to the rough-sleeping and unhoused community in Pittsburgh, Pennsylvania. They collaborate with students and faculty in schools including Public Health, Medicine, Health and Rehabilitation Sciences (SHRS), Nursing, Dental, Pharmacy, and Social Work. They are also a part of the Street Medicine Institute Student Coalition, a group focused on bringing together street medicine programs run by students worldwide.

## Membership Activities

### New Member/First-Time Attendee Breakfast & Program

Are you a new member or attending your first MLA conference? You're cordially invited to join us for breakfast and learn more about MLA while meeting new colleagues. You must have RSVP'ed to attend.

### MLA Connections Booth

Stop by the MLA booth in the Hall of Exhibits to learn more about MLA, member benefits, talk to staff, participate in daily free membership and AHIP raffles, take a fun pic at the photobooth and more!

## Career Services

### Member Resource Center | 329

For your convenience, a photocopier, Windows-based computers, printer and office supplies will be available for association business on a first come first served basis.

### Hours:

- **Tuesday, April 29, 2025**  
2:00 – 5:00 p.m., eastern time
- **Wednesday, April 30, 2025**  
9:00 a.m. – Noon, eastern time  
(Closed for Communities Lunch)  
1:00 – 5:00 p.m., eastern time
- **Thursday, May 1, 2025**  
9:00 a.m. – 5:00 p.m., eastern time
- **Friday, May 2, 2025**  
9:00 a.m. – 1:00 p.m., eastern time

### Resume Clinic

*Presented by the Professional Recruitment and Retention Committee*

Walk-ins welcome! Come in to have an experienced colleague review your cover letter, resume, or CV, help you convert a resume to a CV, conduct a mock interview, career counseling or just talk through the job search. You'll have up to 30 minutes with a reviewer.

## Job Placement Center

Find your next job or advertise your open job opportunities at MLA '25! Stop by to submit your resume or job opportunity for employers and candidates to view, then reserve space to meet during the conference if possible.

## Meeting Experience

### Mobile App

The MLA '25 mobile app is available in the App Store and Google Play Store. The mobile app allows you to view the schedule of events, abstracts, and presentation details in real time. You can also view speaker photos, biographies, video, audio presentations, handouts, slides, list of attendees, and exhibitors. Contact other attendees with in-app messaging. All registrants (virtual and in-person) can use the app to chat and ask questions during live-cast sessions when the audience response system (ARS) is available.

### Online Planner and Content Website

MLA's 2025 Online Planner and Content Website, hosted on Pheedloop, allows you to:

- Access the online planner to see the daily schedule, speakers, and to connect with other attendees
- View virtual and on-demand sessions and posters
- Chat with your onsite and virtual colleagues as you view streamed, on-demand, and virtual-only sessions
- Access content posted by presenters online post-conference

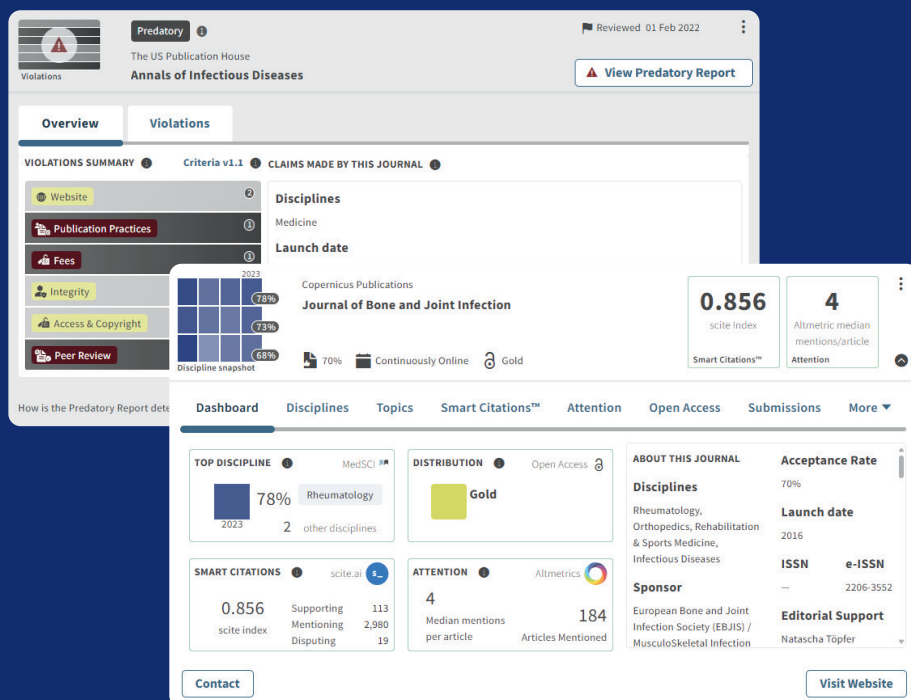
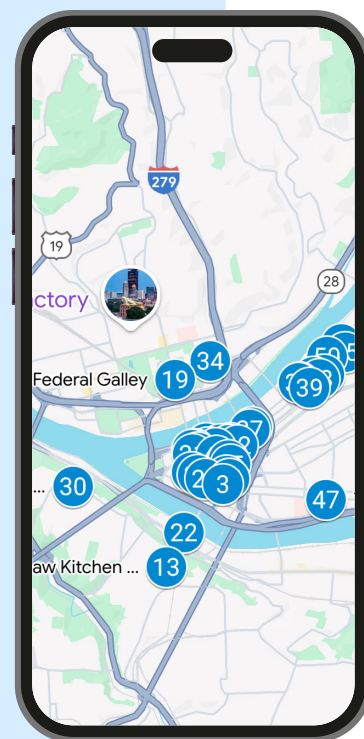


# mla'25

## Dining Guide

# Our Pittsburgh dining guide for MLA 2025!

Hungry? We've got you covered.



## CABELLS Journalytics Medicine & Predatory Reports

- 9k+ verified medical journals
- Submission guidelines
- Detailed metrics
- Insights & trends
- 19k+ predatory journal reports

See us at [BOOTH 715](#) or visit [cabells.com](https://cabells.com) to learn more

# Conference Logistics

## Conference Center

### David L. Lawrence Convention Center

1000 Fort Duquesne Blvd, Pittsburgh,  
Pennsylvania

## Official Hotels

### Westin Pittsburgh

1000 Penn Ave, Pittsburgh, PA 15222

### Omni William Penn

530 William Penn Pl, Pittsburgh, PA 15219

## Travel

If you're flying into Pittsburgh, you'll land at Pittsburgh International Airport (PIT).

ACCESS ADA Paratransit Service is a shared-ride, advance-reservation paratransit service that operates throughout Pittsburgh and surrounding Allegheny County.

If you're driving, check Visit Pittsburgh on Tips for Parking Downtown.

## Transportation

You can choose from many options to get from PIT to downtown Pittsburgh.

We recommend using the 28X Airport Flyer, operated by Pittsburgh Regional Transit

(formerly Port Authority of Pittsburgh), located on the lower level of the Landside Terminal. Buses depart from PIT approximately every 30 minutes outside door 2.

Riders using cash to pay their transit fares must have exact change; credit cards are not accepted on vehicles.

The ticket vending machine allows riders to buy daily, 7-day or 30-day tickets, or add stored value onto a ConnectCard or ConneCTix. You can also purchase mobile tickets by using the Transit app or Ready2Ride app on iOS or Android devices.

Rideshare is available via Lyft and Uber. Check Visit Pittsburgh for more information on all transportation options.



# Careers in Health Sciences Librarianship



## WHAT IS A HEALTH SCIENCES LIBRARIAN?

Health sciences (and medical) librarians are health information professionals who have specialized knowledge in quality health information resources. They have a direct impact on the quality of patient care by helping physicians, health professionals, administrators, students, faculty, and researchers stay abreast of and learn about new research developments in their fields.

Health sciences librarians work anywhere health information is needed, including:

- hospitals, academic medical centers, and clinics
- colleges, universities, and professional schools
- consumer health libraries
- research centers and foundations
- biotechnology, insurance, medical equipment, pharmaceutical, and publishing industries
- federal, state, and local government agencies



## CAREER AND NETWORKING RESOURCES



### Academy of Health Information Professionals

The Academy of Health Information Professionals (AHIP) recognizes the investment of time and effort required for exemplary professional performance and for contributions to the association and to the profession.



### Awards, Grants, and Scholarships

MLA provides financial support at a variety of levels.



### Continuing Education Courses

Earn Continuing Education (CE) credits through extensive educational programs.



### Jobs

MLA's job postings help individuals locate quality jobs and aid institutions in their searches for topnotch employees.



### Specializations

MLA provides certifications for specialized skills.



## How can I learn more about librarians in the Medical Library Association?

Check out "I am MLA" to meet librarians from across the world



# Featured Speaker



## Janet Doe Lecture

***“The I’s Have It: Everything Needed to Practice Medical Librarianship Starts with an I”***

**Jean Shipman, MSLS, AHIP, FMLA**

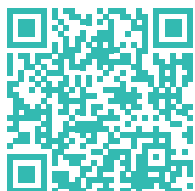
Jean P. Shipman, MSLS, AHIP, FMLA, is retired except for her adjunct faculty position with the Department of Biomedical Informatics, School of Medicine, University of Utah. She was last employed as the vice president of Global Library Relations for Elsevier. Prior to that she was the executive director, Knowledge Management and Spencer S. Eccles Health Sciences Library; director of the MidContinental Region and National Training Office of the National Network of Libraries of Medicine; director for Information Transfer, Center of Medical Innovation; and adjunct faculty of the Department of Biomedical Informatics, School of Medicine; all at the University of Utah. She has also been employed by the John Hopkins University, Greater Baltimore Medical Center, University of Maryland, University of Washington, and Virginia Commonwealth University.

Jean served as president of the Medical Library Association for 2006-2007 and on the Board of Directors for the Society for Scholarly Publishing from 2013-2016. She was a member and cochair of the Chicago Collaborative, a group of publishers, librarians, and editors, who met to discuss issues regarding scholarly communications. She is the coeditor of two books: *Information and Innovation: A Natural Combination for Health Sciences Libraries*, and *Strategic Collaborations in Health Sciences Libraries*. She has also authored many journal articles, book chapters and given numerous professional presentations.

Since retiring, Jean has served as a member and secretary of the Board of Directors, Friends of the National Library of Medicine. She is currently the secretary of the Board of Directors of the Rockfish Valley Community Center and on the steering committee for its Rockfish Gallery & Gifts. She enjoys playing lots of tennis and knits, as she sells items in the Gallery, located in Afton, Virginia.

## DID YOU KNOW?

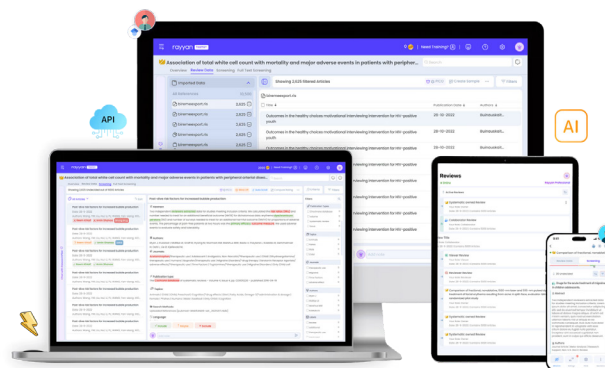
Jean Shipman served on the MLA Board of Directors as the president in 2006-2007. Learn more about her career by reading her Oral History on MLANET.



Trusted by 800K+ researchers from 20K+ organizations

Experience how Rayyan is transforming the way Medical Librarians support systematic reviews!

Stop by our booth #317



- Save 50–90% of researcher time
- Accelerate your organization's research
- Collaborate with anyone, anywhere, anytime

Scalable. Intelligent. Intuitive. Accessible.

#### Rayyan Enterprise Features:

- Complete end-to-end solution
- Supports diverse methods
- Powerful, trusted suite of AI tools
- Zero administration required
- Auto-provision new accounts
- VIP support & private trainings

[www.rayyan.com](http://www.rayyan.com)

Supporting study, research and practice with health resources and publications from CABI



## Global Health

The leading specialist database dedicated to national, regional, and international public health

## Global Health Cases

A curated collection of real examples of global health in practice



Visit us at **MLA booth #412** to find out how **CABI Human Health resources** can support your library

# Schedule at a Glance

(Eastern Standard Time)

7:00 :30 8:00 :30 9:00 :30 10:00 :30 11:00 :30 12:00 pm

Tuesday, April 29

Virtual On-Demand Content Available

MLA Board Meeting

Wednesday, April 30

Virtual On-demand, Livestreamed, and Program Session Content Available

Hall of Exhibits

First Sip of the Day & Opening of Hall of Exhibits

Tech Showcase

Contributed Content

Comm Lunch

Immersion Sessions

Symposia

Thursday, May 1

Virtual On-demand, Livestreamed, and Program Session Content Available

Sunrise Seminars

Tech Showcase

Lunch

Hall of Exhibits

First Sip of the Day

Contributed Content

Janet Doe Lecture

Grab & (Hall o

New Member Program and Breakfast

Symposia

Inform Poster

Friday, May 2

Virtual On-demand, Livestreamed, and Program Session Content Available

Sunrise Seminars

Lunch

First Sip of the Day

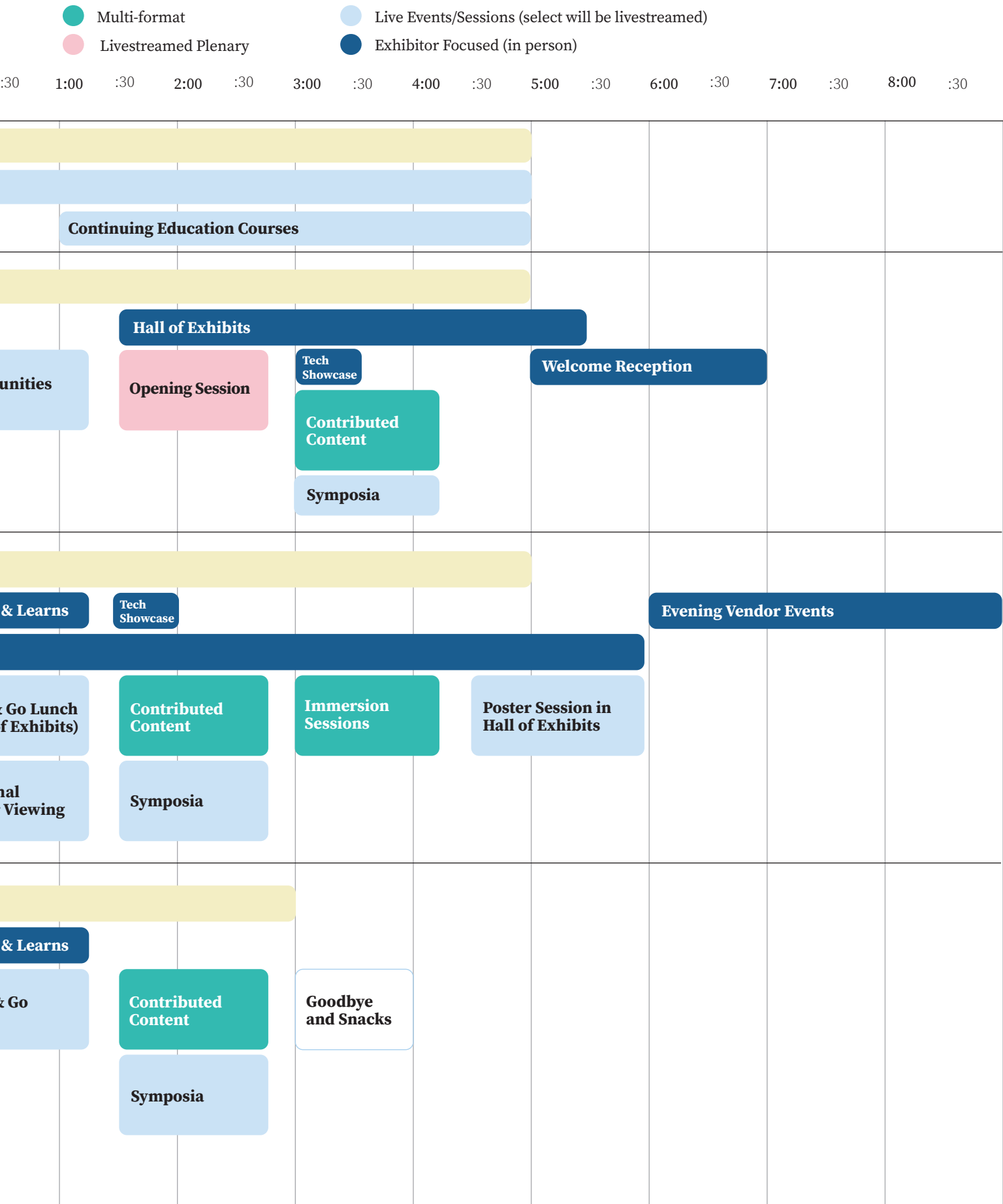
Contributed Content

MLA Advocacy, Listening, and Strategy

Grab & Lunch

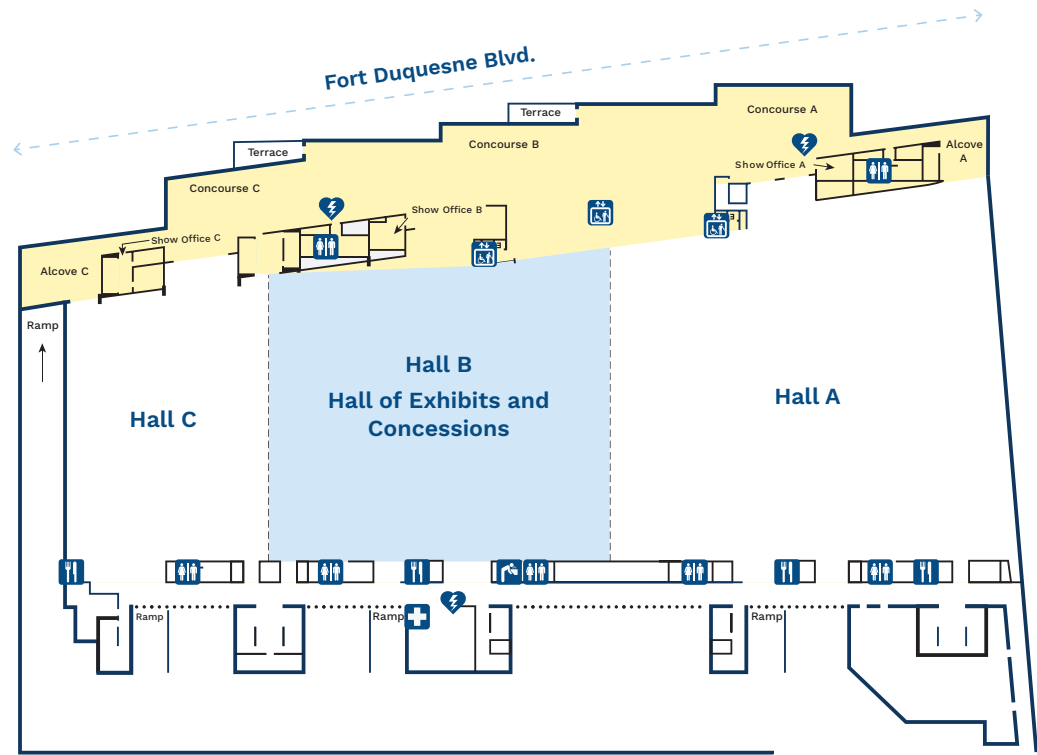
Symposia

Immersion Sessions

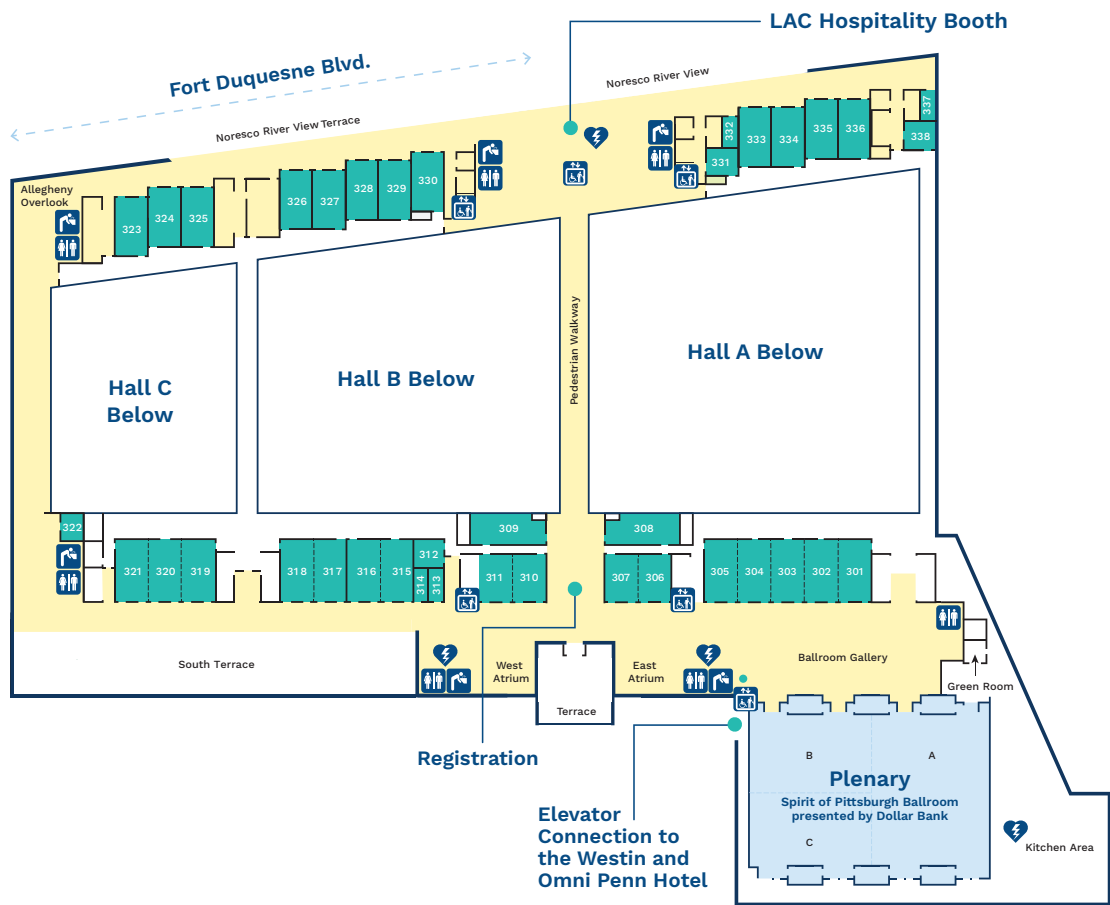


# Convention Hall Maps

## LEVEL 2

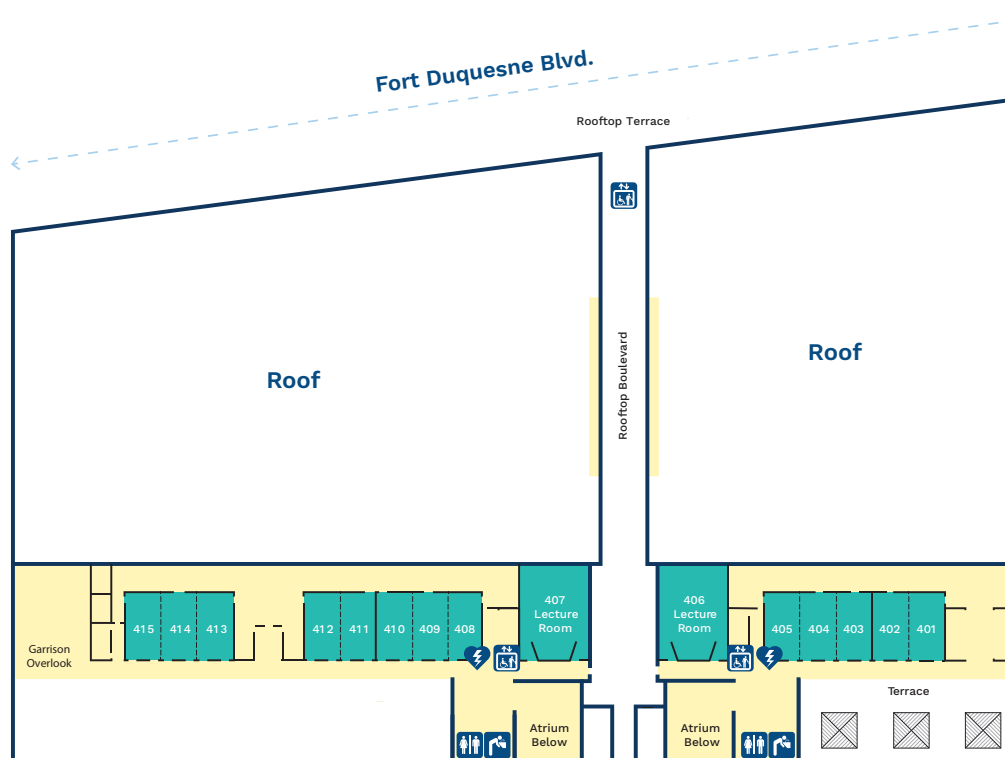


## LEVEL 3





## LEVEL 4



Leverage Lucidea's stellar integrated library system (ILS) and knowledge management (KM) software to facilitate access to critical internal and external knowledge resources.

Through our market-leading products **SydneyDigital** and **Presto**, we empower special librarians like you to curate, share, and create organizational knowledge assets.

**Visit us during the conference at Booth #716** to chat about your medical or healthcare library challenges!

With Lucidea's solutions, your information is simplified and your knowledge is amplified.

**SydneyDigital. Presto.**

# Continuing Education

All courses will take place on Tuesday, April 29, 2025, in Pittsburgh, Pennsylvania. Courses are not available for virtual-only attendees.

## **CE100: Show Your Work! How to Document and Report Search Strategies for Gold Standard Systematic Reviews**

Documentation got you down. Have no fear! This course will show you exactly what to track and how to track it for unimpeachable systematic review search reporting. Whether you are new to working on reviews or want to stay current on emerging best practices, this course can help you confidently record the most important information about your search methods with the right amount of detail, while keeping all your documentation organized.

Instructor:

**Allison McArthur**, Information Specialist, Public Health Ontario (PHO)  
Room 326

## **CE200: Supporting Researchers in Optimizing Data Collection and Management . . .and Gaining a Rare and Valuable Skill**

What if, instead of only assisting researchers with previously collected data you were able to help researchers create clean and tidy datasets from the beginning? What if you could assist them in optimizing data collection and management from the beginning of their research? If you could, you would have a rare skill among data librarians! You would be able to add new value to your library's data services and support high quality data collection and study rigor and reproducibility.

This is a hands-on workshop. You'll work with a sample protocol to set-up an Excel spreadsheet or Google Sheets for data collection and work with tools for collecting, cleaning, and validating data. You'll leave with skills and knowledge that add significant value to the research process and with new confidence, enthusiasm, and pride in your work as a data librarian.

Instructor:

**Jocelyn Swick-Jemison, MLS**, Data Services Librarian, University of Buffalo  
Room 323

## **CE400: It's an Art, Not a Science: Building a Practice of Slow Librarianship as a Health Sciences Librarian Leader**

If you see yourself as a leader, whether in your professional or personal life, slow librarianship can play a key role in your growth. Whether you're familiar with slow librarianship, looking to develop the skills to implement it, or aiming to enhance your library services along with the quality and fulfillment of your work as a library leader at any level, Lorin Jackson, Jill Deaver, and Meredith Solomon—three experienced slow librarianship practitioners—are here to guide you.

Instructors:

**Lorin Jackson, MA, MI**, Assistant Director, Holman Biotech Commons, University of Pennsylvania and Adjunct Professor, Syracuse University

**Jill Deaver, MA, MLIS**, Associate Professor and Chair of the Department for Clinical, Academic, and Research Engagement, Lister Hill Library of Health Sciences, University of Alabama at Birmingham

**Meredith Solomon, BS, MLS, AHIP**, Manager of Outreach and Public Services, Countway Library, Harvard University

Room 325

## **CE600: Hospital Librarianship: Keeping Traditions and Bridging to Innovations: (Re)Vitalizing your Career and Your Library**

Helen-Ann and Heidi Sue, two highly experienced hospital librarians, will inspire you and lead you in free-flowing brainstorming, activities, discussions, and plan-making that will activate your passions and breathe new life into your medical librarianship career and into your library! If you are looking for a single course that can both aid you in your career and provide value to your library, this is it!

You'll leave the class with ideas and plans for making traditional services fresh and for gaining new knowledge and with a feeling of being renewed, invigorated, less fearful, and psyched to add innovations to your work and with one or more workable plans to do or add something new upon your return to your library.

Instructor:

**Helen-Ann Brown, AHIP, FMLA**, Informationist, Virtua Health

**Heidi Sue Adams, MS**, Medical Librarian, Logan Health

Room 327

# Bringing Research to Practice! MLA RTI Poster Session



May 1, 2025 | 1:30 - 2:45 p.m., eastern time | Room 302

Join the Research Training Institute (RTI) faculty and fellows at a special session to learn more about research and how it benefits your library and users. The sessions feature fast paced and engaging “ignite” talks by the RTI fellows about their research projects that are making meaningful contributions to their communities and expanding our health information research knowledge base.

**The order for the in-person presentations (organized by three themes).**

## ASSESSING LIBRARY SERVICES

### **A Needs Assessment Survey for Improving Library Support for Chiropractic Faculty**

*Jennifer Smith, AHIP*

### **Communicating Community Engagement Within Health Sciences Libraries: A Review of AAHSL Member LibGuides and Websites**

*Kim Whalen*

### **Information Needs of Patients with Vasculitis**

*Jodi Hall*

### **Paws in Place: Exploring Animal Assisted Activities and Their Influence on Sense of Place in an Academic Veterinary Library**

*Aisha Grant*

### **Medical Library Employee Understandings of Disability**

*Rebecca Gates*

## ARTIFICIAL INTELLIGENCE

### **Teaching Artificial Intelligence Literacy to Undergraduate Nursing Students Engaged in Research**

*Jamie Quinn, AHIP*

### **Comparing Three Distinct Generative AI Tools' Clinical Evidence Summaries with Medical Librarians' Gold-Standards**

*Mallory Blasingame*

### **Use of Automation Tools in Systematic Reviews and Other Evidence Synthesis**

*Jules Bailey*

## CLINICAL LIBRARIANSHIP

### **Adapting a Validated Measure for Health Sciences Library Impact**

*Regina Vitiello*

### **Exploring Nurses' Perceptions of Using Library Databases for Evidence-Based Research in Hospital Settings**

*John Mokonyama, AHIP*

# Contributed Content

As of April 15, 2025. Check the App for real time updates.

## IMMERSION SESSIONS

**Wednesday, April 30**  
**9:00 - 10:15 a.m.**

### **Replace, Reduce, Refine: The Librarian's Role in Supporting the IACUC | Room 315 - 316**

*Sponsor: Animal and Veterinary Information Specialist Caucus*

Institutional Animal Care and Use Committees (IACUC) ensure animal welfare in research, teaching and testing activities. The IACUC is federally mandated by the United States Department of Agriculture (USDA) and oversees and evaluates all aspects of the institution's animal care and use program. Librarians who serve on their institution's IACUC assist principal investigators in searching for literature that discusses ways to reduce, refine, or replace the use of animals in research. This immersion session will provide attendees with the tools and knowledge necessary to support their institution's IACUC and develop their expertise in crafting animal alternatives literature searches. This session is recommended for anyone supporting animal study researchers or who are interested in or currently serving on an IACUC.

*Andrea Kepsel, AHIP, Elisia George, Elizabeth Tobey, Jenn Monnin, Leah Everitt, Lesley Skalla, Molly Crews, Sally Smith, AHIP, and Sarah Clarke, AHIP*

### **Innovation in Reproductive Health Research and Activism | Room 317 - 318**

*Sponsors: Social Justice & Health Disparities Caucus*

In today's complex political climate, the role of librarians in addressing reproductive health research and activism is more crucial than ever. This engaging Immersion Session will kick off by inviting attendees to share experiences and thoughts related to reproductive research and activism, setting the stage for a lively and inclusive discussion. Our expert panelists will then present their groundbreaking research, showcasing

how libraries can bridge gaps in access and education. Participants will have the opportunity to dive into interactive SWOT analysis activities, collaborating with fellow participants to uncover strengths, weaknesses, opportunities, and threats regarding librarians and reproductive health research. The session will conclude with group discussions and sharing insights, emphasizing how librarians can address disparities in access to care, combat misinformation, and foster community activism and outreach. This session aims to empower librarians by leveraging their research skills and spheres of influence to impact their communities through research, activism, and outreach about reproductive health.

*Emily Vardell, AHIP, Holly Hudson, Brenda Linares, AHIP, Yue Ming, AHIP, and Carrie Adams*

### **Revising Medical Subject Headings: A Collaborative Project to Improve Access and Address Bias | Room 319 - 320**

In response to increased interest in addressing bias in subject headings, the Medical Subject Funnel was formed in 2023. The Medical Subject Funnel is an informal structure for library workers to collaborate on proposals for additions or revisions to MeSH (Medical Subject Headings) and LCSH (Library of Congress Subject Headings) relating to health, medicine, and disability. Members work with representatives from the National Library of Medicine and the Library of Congress to update offensive or outdated language. Funnel members have successfully proposed revisions to over 150 subject headings relating to autism, deafness, reproductive health, and other topics, and regularly investigate future revisions.

*Violet Fox, Kat Balek, Nicolette Jin Olson, and Melissa Weiss*

### **Academic and Hospital Librarianship in the Time of Transformative Agreements: What Else is There? | Room 306-307**

*Sponsors: Scholarly Communications Caucus, Hospital Library Caucus, Collection Development Caucus, Rutgers University; Northwestern University; Harvard University; Johns Hopkins University; and Providence Health*

This panel of academic librarians and hospital librarians will explore and discuss the topic of the ubiquitous Transformative Agreement (TA), more informally known as the Read and Publish Agreement, and its alternatives in the world of scholarly journal publishing. We will define what a TA is in the context of its original transitional purpose, weigh the pros and cons, and differentiate between more effective and less effective agreements currently available. The panelists will emphasize the importance of context, given the evolving nature of the scholarly publishing environment. We will critically look at the inequitable landscape of who gets to participate and benefit from TAs, with key takeaways for academic and hospital librarians. We will also pay particular attention to the implications of the 2022 OSTP Public Access Memo for federally funded research as well as the updated NIH Public Access Policy. Most importantly, we will explore and discuss an alternative world to that of the Transformative Agreement, including more equitable open access models, such as preprint archiving in open repositories, no-fee 'diamond' open access, overlay journals and publish-review-curate methods, and Subscribe to Open. There is a vast and lively world beyond the Transformative Agreement!

*Nancy Shin, AHIP, Colleen Cressman, Paul Lapinski, Jeffrey Carroll, Basia Delawska-Elliott, AHIP, Michelle Kraft, AHIP, FMLA, Karen Gutzman, and Yingting Zhang, AHIP*



# Contributed Content

Please note that all times in the Daily Program reflect Eastern Standard Time

## IMMERSION SESSIONS

### **It Begins with Us: Bringing a Reflective Mindset to Inclusive Hiring and Culture | Room 321**

Sponsors: Leadership & Management Caucus, New Members Caucus

The changing landscape of health sciences libraries is sparking a call to action, prompting timely and important conversations around how we hire, whose voices matter, and what values we want to uphold in the hiring process. With a recognition that we are working within inherently flawed and biased systems, this immersion session will ask participants to examine their hiring practices and challenge their beliefs and assumptions, so they understand where they have choice and agency to envision their hiring practices through a partnership lens. This session will help participants move beyond hiring checklists, focusing on concrete ways to build an organizational culture that favors curiosity over judgment and empowers all who engage in the hiring process. Over the course of the session, panelists will share stories of their ongoing learning in this context and will facilitate brief exercises in which participants will reflect on their organization's hiring practices, their individual role in the hiring process, and how they can begin applying inclusive practices within their local environment.

*Erinn Aspinall, AHIP, Lisa McGuire, Liz Weinfurter, and Nicole Theis-Mahon, AHIP*

**Wednesday, April 30  
10:30-11:45 a.m.**

### **Bridging the Gap for Caregivers: Supporting Those Who Care for Others | Room 315 - 316**

Sponsor: Leadership & Management Caucus

Library leaders and managers supervise employees who care for others and often they may care for others themselves. This could include young children, adult children with disabilities, a spouse, or even older parents. Sometimes, it could be a combination of children and parents. This immersion session will

have a panel of those caring for others to share their perspectives on what leaders and managers should know about accommodating their needs within the constraints of organizational policies. This session is for anyone who has been a parent or a caregiver at any point in their career, anticipates becoming one, or supervises employees who care for others. We hope to facilitate a conversation between caregivers and leaders to discuss the struggles and some strategies for overcoming the barriers to caregiving and how they can build an inclusive and supportive team.

*Bridget Jivanelli, AHIP, Elizabeth Hinton, AHIP, Jenn Monnin, Joy Summers-Ables, Matthew Covey, Jamia Williams, Dede Rios, AHIP, and Stephanie Roth, AHIP-D*

**Thursday, May 1  
9:00 - 10:15 a.m.**

### **From Buns to Tattoos: The Portrayal of Librarians in Popular Culture**

Sponsor: History of the Health Sciences Caucus

This dynamic conversation will reflect on the portrayal of librarians in popular culture through various perspectives including historical, stereotypes, and positive/negative representations. A facilitated flipped classroom format will assist in exploring selected examples of literature, film, television, and related media while yielding valuable social, historical, and cultural insights.

*Jeff Slagell*

**Thursday, May 1  
1:30 - 2:45 p.m.**

### **AI's Climate Conundrum: The Environmental Costs of Advanced Technology | Room 315 - 316**

Sponsors: Social Justice and Health Disparities Caucus and Public Health/Health Administration Caucus

The proliferation of Artificial Intelligence (AI) provides researchers with opportunities to collect optimized climate

change data. Simultaneously, emerging research illustrates that AI strains natural resources, thereby increasing the disproportionate effects of climate change on marginalized communities. For example, AI consumes vast amounts of energy, resulting in significant carbon emissions; additionally, large quantities of natural resources are used to construct the infrastructures of AI data centers, resulting in the depletion of minerals in the soil (UNEP, 2024). Health science librarians are starting to understand AI's ethical challenges, but there needs to be more discussion around its environmental impact, especially concerning marginalized communities. This MLA immersion session will offer an interactive space to explore these issues and take them further by encouraging attendees to think about actionable ways to reduce AI's environmental impact within their communities as health science librarians. AI has an environmental problem. Here's what the world can do about that.

*Tyler Moses, Sandra Desjardins, Chloe Hough, AHIP, Lorin Jackson, and Casey Phillips, AHIP*

**Thursday, May 1  
3:00 - 4:15 p.m.**

### **Search Hedge Development and Validation | Room 315 - 316**

Sponsor: Pediatrics Librarians Caucus

During this immersion session, learners will be actively engaged in the process of developing and validating an infant search hedge for PubMed. Through demonstrations and group work, they will identify relevant concepts and appropriate strategies for a search hedge and then be guided by instructors through relative recall calculations to generate sensitivity and specificity data against a provided test set of citations.

*Lynn Kysh, Emily Brennan, Rachel Hinrichs, and Alyssa Portwood, AHIP*

## IMMERSION SESSIONS

### **Succession Planning: Building Leadership for a Resilient Future! | Room 317 - 318**

*Sponsors: New Members Caucus*

As libraries navigate an era of constant change, succession planning has emerged as a vital strategy to sustain leadership, transfer institutional knowledge, and cultivate organizational resilience. This panel will feature diverse perspectives from library leaders who have successfully implemented succession planning initiatives.

Panelists will share case studies, best practices, and lessons learned in developing robust succession pipelines that identify high-potential staff, offer targeted professional development opportunities, and foster a culture of mentorship and growth. The session will explore strategies to address challenges such as resource limitations and staff engagement while emphasizing the role of intentional planning in promoting stability and innovation.

Participants will gain practical insights, actionable strategies, and inspiration to develop or refine succession planning efforts in their own libraries. The discussion will include opportunities for audience engagement to share experiences, pose questions, and collaborate on ideas to build a sustainable future for library leadership.

*Catherine Soehner, AHIP, DeAnn Brame, Elizabeth Hinton, AHIP, Holly Hudson, Maud Mundava, AHIP, and Stephanie Fulton, AHIP, FMLA*

### **Making the Invisible Visible: Amplifying the Contributions of African American Health Sciences Librarians | Room 319 - 320**

*Sponsors: African American Medical Librarians Alliance, Social Justice & Health Disparities Caucus*

This Immersion Session seeks to bring attention to the vital yet often overlooked contributions of African American

health sciences librarians. These professionals play a key role in advancing medical research, improving healthcare access, and supporting health professionals' academic and research needs across various sectors. The session will cover: The historical and present-day roles African American health sciences librarians have in shaping medical research and access to information. Their efforts to promote diversity, equity, and inclusion in healthcare through library services. The challenges they faced, including barriers to leadership, recognition, and career advancement. Strategies to enhance recognition and support for these librarians in academic, clinical, and public health settings.

*Kelsa Bartley, Shannon Jones, AHIP, FMLA, Tamara Nelson, AHIP, and Jamia Williams*

### **The Library and Medical Humanities: Getting Content into the Medical School Curriculum | Room 306 - 307**

*Sponsor: Leadership & Management Caucus*

Librarians make patients and communities healthier. We know it instinctively, but it is a common frustration for librarians in medical schools to bump up against a glass ceiling when trying to get time, content, and entrance to the Med School curriculum. Whether the problem stems from lack of time, lack of professional standing, or lack of perceived value to students, the end result is so often the same. Students need what we know; they benefit from our expertise; and our wisdom can make their - and more importantly their patients' - lives easier, quicker, more efficient, and healthier. At Rocky Vista University College of Osteopathic Medicine, the Frank Ritchel Ames Memorial Library and the Department of Medical Humanities have a long-standing partnership to deliver Evidence-Based Medicine in the core curriculum for all first-year medical students. We want to tell you how we were successful in this endeavor; how

we convinced the curriculum deans and committees that information literacy, information seeking, and evidence-based medicine are clinical skills taught best by librarians and Humanities faculty. And we want to build arguments, brainstorm solutions, and create roadmaps for you to get more time in the curriculum too.

*Brian D. Schwartz and Nicole Michels*

### **Friday, May 2 9:00 - 10:15 a.m.**

#### **Bridging the Gap: Developing a Radically Empathetic Practice | Room 315-316**

*Sponsor: Leadership & Management Caucus*

Explore the transformative power of understanding and connection for libraries with this immersion session focused on applying radical empathy using Dr. Terri Givens' six-step framework. The goal is to learn to integrate radical empathy in health sciences libraries. Participants will actively engage with diverse perspectives to foster inclusivity and support for all library stakeholders. The framework and inspiration for this immersion session is MLA'23 annual meeting John P. McGovern lecturer Givens and her book *Radical Empathy: Finding a Path to Bridging Racial Divides*. Participants are encouraged to familiarize themselves with Dr. Givens' Six Steps to Radical Empathy prior to the session.

*Adela V. Justice, AHIP, Kay Strahan, AHIP, Shannon Jones, AHIP, FMLA, and Maria Walker*

### **Friday, May 2 10:30 - 11:45 a.m.**

#### **Statewide Access to Biomedical Literature: Health Equity Through Information | Room 315 - 316**

Research confirms that patient outcomes improve when healthcare providers practice in an evidence-based manner

## IMMERSION SESSIONS

[1]. Increasing access to information for healthcare professionals will have an important and positive impact on patient care and outcomes by supporting the practice of evidence-based decision making. Unfortunately, paywalls limit access to approximately 70% of published biomedical literature and only an estimated 28% of medical research is available as open source [2]. A panel of librarians will provide participants with descriptions of successful statewide models providing access to evidence-based information to healthcare professionals along with an understanding of hidden costs for each model, a guide to find funding, and a call to action for implementing similar programs at a local level. The session ends with breakout groups to network and discuss next steps.

[1] Cooley ME, et al. Cancer Nursing. 2023 Mar 1;46(2): E110-21.

[2] Piwowar, H., et al. Scholarly Research and Information. 2020;2(4):228.

Anne Diekema, Daniel Daily, Annabelle Nunez, Catherine Soehner, AHIP, and Tracy Thornton

### Building Bridges and Forging Stronger Relationships with Faculty | Room 317 - 318

Sponsor: Academic Librarians Caucus and Libraries in Health Sciences Curriculums Caucus

Struggling to connect with faculty? Discover strategies to break through barriers and build meaningful, collaborative relationships. Walk away with concrete strategies, ideas, and techniques to build bridges with faculty. This immersion session will engage attendees looking to build stronger relationships with faculty through a panel discussion, participating in question and answer, and learning from one another through facilitated small group activities.

Cynthia Chelf, AHIP, Andrew Haggarty, Molly Hemphill, Stephanie Hallam, Ashley Purvis, Angela Spencer, AHIP, Michelle L. Zafon, AHIP, Lisa Marks, AHIP, Heidi Reis, AHIP, and Erin Ware

### Building Psychologically Safe Work Environments: Enhancing Well-being and Collaboration in Libraries | Room 319 - 320

Sponsors: African American Medical Librarians Alliance, Leadership & Management Caucus, New Members Caucus

This session will provide library professionals with knowledge and practical tools to foster psychologically safe work environments. Psychological safety, the belief that one can express ideas, ask questions, and admit mistakes without fear of negative consequences, is crucial for promoting innovation, employee well-being, and overall team effectiveness.

Shannon Jones, AHIP, FMLA and Tamara Nelson, AHIP

### AI Language in Vendor Contracts: Opportunities, Challenges, and Best Practices | Room 306 - 307

Sponsors: Osteopathic Caucus, New Members Caucus, and A.T. Still University

Artificial Intelligence (AI) has been on all our minds. Vendor contracts have now started inserting clauses about how AI can interact with the content in their products. Also, products that have AI components also have language related to how data input into their products is handled. How do we deal with these issues? We will bring together a panel of practitioners to discuss these issues at the various levels where this connects, a library director, an ERL, a solo practitioner, a vendor, and a consortium licensing representative.

Hal Bright, AHIP, Maud Mundava, AHIP, and Michael Lindsay, AHIP-D



# Contributed Content

As of April 15, 2025. Check the App for real time updates.

## PAPERS

### Wednesday, April 30 10:30 - 11:45 a.m. | Room 303

#### Passing the Torch - Building a Transition Strategy using Flow Chart Software

*Sara Pimental, AHIP and Eve Melton*

#### Leveraging Diverse Data Collection Methods to Better Understand Students' Preferences for Library Renovations

*Kelly Weigand*

#### Developing a Collaborative Space to Contribute to Student Success: A Case Report

*Donghua Tao, Raphael D. Florestal-Kevelier, Kathleen J Kashima, Latrina Lee, Kevin O'Brien, Linda Naru, and Samantha Rosa*

#### "We Want to Hear from You!" Understanding Preferences, Perceptions of Benefits and Needs of Active Member Organizations in the NNLM

*Verónica Hoyo, Keith Herzog, and Kristi Holmes*

### Room 304

#### Bridging Health Sciences Colleges Through Interprofessional Education using Simulation

*Lindsay Blake, AHIP*

#### Innovative Instruction: Teaching a Systematic Review Lesson through Candy Sorting

*Sarah Adcock*

#### Melodic Pedagogy: Transforming Library Instruction with Performance Arts

*Emily Joseph*

#### Creative Arts & Storytelling for Health and Wellness

*Gail Kouame and Leesha Coleman*

#### Innovative Clinical Education and Embedding Library Services

*Mary Shah, AHIP*

### Room 305

#### Connecting the Dots: The Library as a Pathway from Traditional to Innovative Practices in Academic Publishing

*Mina Ghajar and Maria Deptula*

#### Assessing the Impact of NIH Rigor and Reproducibility Policies on Early-Career Research: Opportunities for Librarian-Led Interventions

*Fred LaPolla and Robin Champieux*

#### Launching a New Institutional Repository to Collect Faculty Publications: Honoring the Past While Planning for the Future

*Sharon Duffy*

#### Modern Time Capsule: Shaping the Future and Building a Better Tomorrow

*Angela Murrell, Sunny Chung, AHIP, Kay Strahan, AHIP, and John Mokonyama, AHIP-D*

### Wednesday, April 30 3:00 - 4:15 p.m. | Room 303

#### Standards for Working with Research Librarians- on Systematic Reviews (SWiRL-SR)

*Stephanie Roth, AHIP-D*

#### Supervision of Evidence Synthesis Projects in Health Sciences Education: Experiences of Librarians, Students, and Faculty

*Michelle Demetres, Andy Hickner, Drew Wright, and Diana Delgado*

#### Where Have All the Librarians Gone? A Bibliometric Analysis of National-Level Systematic Reviews

*Sa'ad Laws, Ross MacDonald, Nurul Mansor, and Andrea Morciano*

#### MLA: Who Is Publishing and Presenting?

*Gina Genova*

#### Exploring the Experiences of Librarians Working with Physician Associate Programs: A Mixed Methods Study

*Megan A. Jaskowiak, Michelle Nielsen Ott, AHIP, and Karina Kletscher, AHIP*

### Room 304

#### Pursuing Leadership in Literacy to Ameliorate Head and Neck Cancer Disparities: Bridging tradition with Public Librarians

*Irene Lubker, AHIP and Joni Nelson*

#### Helping Medicine Faculty Cross the Bridge to Innovative Use of AI in Classroom and Clinical Education

*Melanie Sorsby AHIP, Amy Martin-Klump, Bryn Murphy, and Sheila Green AHIP*

#### Self-Paced Learning Modules Prepare Nursing Students to Lead Conversations About Health Misinformation with Patients and Colleagues

*Rebekah Miller, Sera Thornton, and Theresa Koleck*



# Contributed Content

Please note that all times in the Daily Program reflect Eastern Standard Time

## PAPERS

### Enhancing All of Us Data Utilization Through Innovative Library Initiatives

Alexis Cenname, and Ansuman Chattopadhyay

### Empowering Biomedical Research Through Library-Led Bioinformatics Support: Insights from the Molecular Biology Information Service

Sri Chaparala and Ansuman Chattopadhyay

## Room 305

### Revitalizing a Graphic Medicine Collection: Assessing Usage and Increasing Representation of Marginalized Communities

Ariel Pomputius, AHIP, Chloe Hough, AHIP and Victoria Miller

### Bridging Gaps by Building Bridges: Enhancing DEIAB Language in Health Sciences Library Collection Development

Aimee Asante and Kathleen Phillips

### Filling the Gaps: Collecting DEIA Healthcare Materials for a Health Sciences Library Collection

Kimberley Barker, Lewis Savarese, and Allison Cruise

### Expanding Wellness Horizons: Integrating Innovative Dimensions into Our Library Collection

Ariel Pomputius, AHIP; Jennie Crumpton, and Chris Eaton

## Virtual

### Troubling Knowledge Hierarchies: Facilitating Critical Engagement with Information Searching in the Health Sciences

Tova Johnson

### The Relevance of Health Equity to the Evidence Synthesis Process: Results from a Quantitative Survey of Health Information Professionals

Stacy Torian and Stephen Maher

### Readability and Understandability of Online Patient Education on Semaglutide: Recommendations for Consumer Health Librarians

Alexandria Q. Wilson, AHIP, Shauntá Chamberlin, R. Eric Heidel, and Kelsey L. Grabeel, AHIP

### Librarian Led Zip Code Analysis to Target Underserved Communities

Rachel E. Roberts, AHIP, and Kelsey L. Grabeel, AHIP

### Developing an Online Immersive Fellowship Training Program in Health Sciences Librarianship

Ana D. Cleveland, AHIP, FMLA and Jodi Philbrick, AHIP

## Thursday, May 1

9:00 - 10:15 a.m. | Room 303

### Educational Method Terms: A Standardized Language to Describe Instruction and Assessment across Health Professions

Nancy E. Adams, Lori DeShetler, Katie Maietta, Alexis Rossi, and Julie Youm

### Librarian Involvement in DNP Education: A Literature Review

Amanda Datesman, AHIP

### The Summer Scoop: A Resource to Support Medical Student Research

Caitlin Plovnick, Fred LaPolla, and Kelly Ruggles

### Academic Health Sciences Librarians & Video Consultations: Once Rare, Then Required, Now Preferred

Amelia Brunskill and Rosie Hanneke

## Room 304

### Building a Bridge to Burnout Reduction by Proactively Incorporating Workplace Accommodations for Neurodiversity

Niki Cobb, AHIP and Maggie Albro

### Disability and Neurodiversity in Library and Information Science Research: A Scoping Review

Gail Betz, Jordan Heustis, and Nicole Shelawala

### "I Am Not Alone": A Quantitative Analysis of Infertility Patients' Health Information Sharing and Social Engagement on Reddit

Yue Ming, AHIP, Emily Vardell, AHIP, and Paul A. Thomas

### Librarian-Led Health Literacy: Developing a Bilingual Activity Booklet for Spanish-Speaking Children in a Free Clinic

Jordan L. Ford

### Opportunities and Challenges of Building and Evaluating a Large National Program to Foster Health Literacy

Katie Chan, Alla Keselman, Martha Meacham, Keith Herzog, Verónica Hoyo, and Kristi Holmes

# Contributed Content

As of April 15, 2025. Check the App for real time updates.

## PAPERS

### Room 305

#### **Anything You Can Do, AI Can Do Better... or Can It? Comparing ChatGPT's Search Strategy Outputs with Cochrane Review Searches**

*Katherine Howell, Rebecca Carlson, AHIP; Emily Jones, AHIP, and Elizabeth Moreton*

#### **Validated Modular Pediatric Age Group Search Hedge: An MLA Pediatric Librarians Caucus Initiative to Support Practice and Research**

*Marlowe Bogino, AHIP, Emily Brennan, Hannah J. Craven, Deborah Divis, AHIP, Susan L. Groshong, Rachel Hinrichs, Jessica James, Hilary Jasmin, Jill R. Kavanaugh, AHIP, Lynn Kysh, Michele Mason-Coles, Jenn Monnin, Alyssa Portwood, AHIP, Kathryn Vela, Sara Westall, Elizabeth C. Whipple, AHIP, Christine Willis, AHIP, and Kathy Zeblisky*

#### **Development and Validation of a Search Filter to Identify Research on Bisexuality**

*Jane Morgan-Daniel, AHIP, Chelsea Misquith, and Andy Hickner*

#### **Automated Search Translators: Comparative Effectiveness of Polyglot and Embase Query Translation Tools**

*Dan Stuart, Shannon Harris, Suzanne Gray, Erik Wilkinson, and Kristalee Kennedy*

#### **Using Near/ To Go Far: Optimization of Proximity Operators in Comprehensive Literature Searches**

*Luke Barron, Rebecca Carlson, Katherine Howell, and Joel Collier*

### **Thursday, May 1 1:30 - 2:45 p.m. | Room 303**

#### **Bridging Tradition & Innovation: Utilizing Expert Knowledge and Peer Review Process to Re-Imagine the NAHRS Nursing Essential List**

*Rebecca Raszewski, AHIP, Karen S. Alcorn, AHIP, Carolyn Ching Dennison, AHIP, Alissa Fial, Lorraine Porcello, Rachel Keiko Stark, AHIP, and Sarah Wade*

#### **Supporting Physicians in Training via Quality Improvements Projects Using Evidence-Based Library Services for Residents' Development and Wellbeing**

*Michele Klein-Fedyshin, AHIP-D, FMLA, Alyssa H. Young, Julie B. McCausland, Amanda Auer-Porch, Mary Margaret Populo, and Alexis Cennane*

#### **Building Bridges: Connecting Medical Librarian Services to Organizational Priorities**

*Michelle Lieggi, AHIP and Lindsey Gillespie, AHIP*

### **Room 304**

#### **Turning Pages: Exploring Library Onboarding Experiences to Cultivate New Hire Preparation**

*Lindsay Blake, AHIP, Caraline Annichiarico, and Kay Strahan, AHIP*

#### **Bridging the Gap in Liaison Support Through Enhanced Professional Development**

*Courtney Pyche, AHIP-P, Lauren Adkins, AHIP, Hannah Norton, AHIP, Michele Tennant, AHIP, FMLA, and Alyson Young*

#### **Decentralized Approaches to Infodemic Control: Wikipedia as a Tool for Information Diplomacy**

*Bethany S. McGowan, AHIP*

### **Room 305**

#### **Bridging Data and Disciplines: Supporting Secondary Data Use and Collaboration through a Librarian-Led Workshop Series**

*Michelle Yee and Genevieve Milliken*

#### **Creating Structured Gene Metadata in an Institutional Data Catalog Using Researcher Feedback**

*Ummea Urmi, Rebecca Kaplan, Ian Lamb, Michelle Yee, and Nicole Contaxis*

#### **Mapping Research Impact Services: An Observational Study**

*Fei Yu and Xinyu Peng*

#### **From Data to Decisions: Visualizing Open Access Publishing Trends to Inform Institutional Strategy**

*Emily Gorman and Nicole Shelawala*

#### **Implementing the NLM All of Us Academic Libraries Program at a Minority-Serving Institution Pursuing an R2 Designation**

*Yuqi He, Nick Szydlowski, Dawn Hackman, AHIP, and Zachary McNiece*

### **Friday, May 2 9:00 - 10:15 a.m. | Room 303**

#### **The Faces of CHIS: An Evaluation of CHIS Recipients**

*Samantha Nunn*

# Contributed Content

Please note that all times in the Daily Program reflect Eastern Standard Time

## PAPERS

### Check it Out! Blood Pressure in Public Libraries: A Consumer Health Library's Role in a Community-Based Blood Pressure Screening Program

Dana L. Ladd, AHIP, Talicia Tarver, and Jackson Wright

### Helping Alabama Public Librarians Support Health Literacy in Their Communities: A Mixed Methods Needs Assessment

Alan Backer, Megan Bell, AHIP, Damiana Fortenberry, Monica Hodge, Kelly Weigand, and Andrea Wright

### "Social Media is Imperfect, but it's the Best We Have": Understanding and Addressing Sexual Health Information Seeking Challenges Among Young Adults

Nick Vera

## Room 304

### Working to Close the Loop – Contextualizing EBP for First Year Medical Students

Jamie M. Gray, Sa'ad Laws, Samantha Cayo, Alecia Perkins, and Ross MacDonald

### Leveraging Embedded Librarians within Project ECHO to Address Public Health Crises

Bonnie Leigh Reifsteck, and Kent Norsworthy

### Medical Libraries Supporting Outreach to Agricultural Communities and Broadband Planning with Public Libraries: A Qualitative Research Study

Roger Russell, Jamie Bloss, AHIP, and Mary Roby

### Pharmacists in the Know: Leveraging Scholarly Resources

Rachel Whitney, AHIP, Hilary Jasmin, Christopher Giuliano, Audrey Kostrzewa, Melissa Hunter, Christopher S. Wisniewski, and Emily Gorman

### Animating a Collection: Efforts to Describe and Bring a Unique Collection into the Public Eye

Chris Eaton, Alyson Young, and Nina Stoyan-Rosenzweig

## Room 305

### Professional Development Among Medical Librarians in the Developing World: Nigeria as a Case

Bilamin O. Popoola, PhD; Kamal T. Omopupa, PhD; Adebambo A. Oduwole, PhD

### Empowering Postdoctoral Scholars: Insights from Library Focus Groups

Lena Bohman, Marla Hertz, and Regina Vitiello

## Friday, May 2 1:30 - 2:45 p.m. | Room 303

### Evidence Synthesis On the Rise: A Citation Analysis of Publications from an R1 Institution Published 2014-2024

Jenn Monnin

### Glass Half Full: Mitigating the Environmental Impact of AI Use for Medical Librarians

Allison Cruise

### Hospital Librarians on Clinical Ethics Committees: Enhancing the Role and Perceived Value of Hospital Librarians

Richard James, Kristina Flathers, Michelle Bass, AHIP, Konstantina Matsoukas, and Jeannine Creazzo, AHIP

### Identifying Strengths and Gaps in Health Equity Research: A Portfolio Analysis of Federally Funded Grants Utilizing Community Engaged Research Methods

Poppy A. Krump, Taneya Y. Koonce, Consuelo H. Wilkins, Spencer J. DesAutels, Mallory N. Blasingame, Alicia Cavanaugh, Laura A. Logie, Tiffany Vassell, Braveheart Gillani, Jasmine Bell, and Nunzia B. Giuse, FMLA

## Room 304

### Health Literacy and Picture Books: Analyzing Selection Practices and Professional Perspectives, a Scoping Review

Alexia Riggs and Esther Garcia

### Searching in the Dark: Understanding the Information Needs of People with Polycystic Ovary Syndrome

Holly Hudson and Sandra De Groote

### Bridge Over the Troubled Waters of Medical Misinformation: PAUSE for your Health and IF I APPLY

Kathleen Phillips, Bradley Long, AHIP-D

### Bridging Gaps: A Pilot Program to Expand CHIS Training

Jessi Van Der Volgen, AHIP, Jamia Williams, and Samantha Nunn

### Data Dilemma: Evolving Roles and Skills for Medical Librarians

Sunny Chung, AHIP, Mimi Byun, and Nina Exner, AHIP

# Contributed Content

As of April 15, 2025. Check the App for real time updates.

## PAPERS

**Friday, May 2**

**1:30 - 2:45 p.m. | Room 305**

### **Expanding Outreach: The Impact of Librarian-Authored Research Briefs**

*Kaitlin Tiches*

### **Building a Bridge While You're Crossing It: Testing New Tools & Practices for an Established Exhibition Programming Team**

*Margaret Ansell, AHIP-S, Jennie Crumpton, Jane Morgan-Daniel, AHIP, Ariel Pomputius, AHIP, Courtney Pyche, AHIP-P, and Nina Stoyan-Rosenzweig*

## **Virtual**

### **Automated Indexing of the Biomedical Literature in Medline: A Scoping Review**

*Dean Giustini, Alexandre Amar-Zifkin, Eileen Chen, and Janice Kung*

### **Evaluation of the Library Session in a Health System RN Research Fellowship Program**

*Frances Chu, Basia Delawska-Elliott, AHIP, Carrie Grinstead, AHIP, Dana Kopp, AHIP, and Heather Martin, AHIP*

### **Educational Programming to Promote the Use of a New Research Analytics Product**

*Terry Kit Selfe, AHIP*

### **A Semi-Automated Process to Assist with Clinical Expert Identification**

*Sharon Bailey, Robin Featherstone, Hannah Loshak, and David Kaunelis*

### **Embracing Care: Rethinking Grief in Health Sciences Libraries**

*Xan Goodman, AHIP, Jamia Williams, and Twanna Hodge*





# Contributed Content

Please note that all times in the Daily Program reflect Eastern Standard Time

## LIGHTNING TALKS

**Wednesday, April 30**  
**10:30 - 11:45 a.m. | Room 302**

**EndNote Buddy: One Library's Custom GPT Automated Self-Service Customer Service Bot**

*Christopher Lao-Scott*

**Evaluation of Cochrane's Evidence Pipeline for Populating CENTRAL: 99% Sensitivity in the Identification of Unique Reports of Randomized Trials Eligible**

*Samantha Cox, Anna Noel-Storr, Susanna Wisniewski, and Gordon Dooley*

**Reviewing the Systematic Reviewers: A Cross-Sectional Analysis of Systematic Review Producers in MLA**

*Alyssa Grimshaw*

**Conducting a Methodology Review on Health Disparities Research: Future Insights into Public Health Evidence Syntheses**

*Cayla Robinson, Julie Volpenhein, and Margie Ruppel*

**The Power of Precision: Examining Librarian Impact on Systematic Review Search Quality**

*Sa'ad Laws*

**Ready, Check, Go! Integrating a Research Team Checkpoint Tracker into an Evidence Synthesis Services Communication Flow**

*Tiffany Follin, AHIP-S, and Michelle Keba Knecht, AHIP-D*

**Mapping Overlaps of Primary Studies in Umbrella and Meta-Reviews**

*Lori A. Harding, AHIP*

**Adapting MLA's "My Favorite Tool" for a Large Academic Library**

*Kate Silfen*

**Communicating to GME Trainees: Using a Needs Assessment Survey Data to Inform Targeted Audiences of Library Services**

*Emily Johnson-Barlow, AHIP, Holly Hudson, Emily Gilbert, Quincy McCrary, Deborah Lauseng, and Tina Griffin*

**PubMed: A Source of Open Images?**

*Ellie Svoboda, AHIP, and Teresa Connolly*

**3:00 - 4:15 p.m. | Room 302**

**Pushing Deeper than the 'Yada, Yada, Yada' of AI: Equipping Medical Students to Use AI in Their Research and Talk about AI with Their Patients**

*Daniel Eller, Alok Patel, Connie Wong, and Colleen Cuddy*

**Making Thinking Visible: Using Thinking Routines to Promote Critical Thinking Skills in Health Science Students**

*Amy G. Ferguson*

**Automated Rubrics for EBM Assessment**

*Juliana Magro*

**Measuring Library Instruction Success: Utilizing Project Outcome and Exit Ticket Data on LibWizard**

*Dominique Couturier, Kristen Sheridan, Barbara Slover, Katie Sweeney*

**Health Literacy Workshops in Public High School Career Technical Education Classrooms**

*Colleen Foy, AHIP*

**Evaluating the Usefulness of Library Tools in Support of a Health Sciences Curriculum and the Helpfulness of Librarian Assistance: A Survey of Students' Perceptions**

*Jennifer A. Silverman*

**Empowering Faculty Through Library Collaboration: A Micro-Credential Program for Research and Publishing**

*Emily C. Harris*

**Bridging the Gap Between Student Needs and Library Services for a Health Sciences Writing Course**

*Sunny Chung, AHIP, Jessica Koos, Laurel Scheinfeld, and Michael B. Huang*

**Supporting a Medical School Research Practicum Course - Five Years in Review**

*Tariq Rahaman, AHIP*

**Bringing AI into Family Medicine Clerkship: OpenEvidence as a Conversation Starter**

*Sarah Jane Brown and Ryn Gagen*

**Scrutinizing AI Tools for Medical Literature Searches**

*A'Llyn Ettien, AHIP, Jillian Carlin, Anna Dorste, Kathy Downing, Rebecca Drouhard, Bridget Gunn, Jessica Kilham, Megan McNichol, Kate Silfen, and Allie Tatarian*

**A Sense-ational Solution: Implementing Sensory Spaces in Medical Libraries**

*G.J. Corey Harmon AHIP, and Soph Myers-Kelley AHIP*

# Contributed Content

As of April 15, 2025. Check the App for real time updates.

## LIGHTNING TALKS

### **Innovative Insights and Traditional Wisdom: Tools to Evaluate Generative AI and Social Media**

*Annaliese Cuneo, Dana Gerberi, Ellen Rothbaum, and Helen-Ann Brown Epstein, AHIP, FMLA*

### **Thursday, May 1 9:00 - 10:15 a.m. | Room 302**

#### **Leveraging SUSHI Counter Data for Informed Decision-Making in a System of Medical Libraries**

*Ross McKinney and Christy Tyson*

#### **Virtual Author Program at a Hospital Library**

*Liz Kellermeyer, AHIP*

#### **Increasing the Reach of Data: Teaching Researchers About Data Articles**

*Kate Saylor, Mark MacEachern, and Sara M. Samuel*

#### **Leveraging Relationships and Usage Data: Collaborative Decision-Making in Response to Unsustainable Publisher Costs**

*Lily Martin, C.M. Flynn, Joey Nicholson, and Karen Yacobucci*

#### **Journal Selection Analysis: One Institution's Publication Trends**

*Tierney Lyons, Iris Johnston, Katrina Romagnoli, and Amy Allison*

#### **Understanding the Landscape of "Letter" Publication Types in MEDLINE**

*Sophie Nachman and Katie Kidwell*

### **Exploration of Writing Support Services in Libraries at Colleges of Osteopathic Medicine**

*Danielle Masursky, Abbey Griffith, and Lori Fitterling*

### **Barriers to Publication Among Graduate Medical Education Residents: A Qualitative Case Study**

*Janet L Hobbs*

### **A Snapshot of Library Publishing Activities in the Health Sciences**

*Gina Genova*

### **Sustaining Metadata Integrity in a Mature Data Discovery Platform**

*Michelle Yee, Rebecca Kaplan, Ummea Urmi, Ian Lamb, and Nicole Contaxis*

### **Ensuring Digital Accessibility in an Institutional Data Catalog**

*Rebecca Kaplan, Ian Lamb, Ummea Urmi, Michelle Yee, and Nicole Contaxis*

### **Virtual 1:30 - 2:45 p.m.**

#### **AI and Collections in Health Sciences Libraries: Bridging the Gap Between Publisher Tools and the Libraries**

*Megan Inman*

### **Pink Pony Club: A Year of Implementing Fun Initiatives to Foster Well-Being**

*Katherine Carlson, Beth Blackwood, and Hope Riffe*

### **"Can ChatGPT Answer Patient's Questions?"**

*Quincy McCrary, Tina Griffin, Donghua Tao, Karl M. Kochendorfer, Anuj Gautam, Bichoy S.R. Labib, Mohammad Arvan, Jason Flynn, Kaitlyn Jiang*

### **Exploring Data Preservation and Sharing Language in Common Evidence Synthesis Guidance Documents**

*Uta Hussong-Christian and Clara Llebot*

### **Using AI To Locate Academic and Government Conversations on Public Health Policy**

*Will White*

### **Centers, Institutes, and Hospitals, Oh My! Creating an Evidence Map at an Ivy Plus University with Diverse Affiliates**

*Laura Haygood, AHIP, and Lauren Fletcher*

### **Friday, May 2 9:00 - 10:15 a.m. | Room 302**

#### **Establishing the Southern Chapter's Early Career Librarians Initiative: Empowering the Next Generation of Library Leaders**

*Heather N. Holmes, AHIP, Nick Vera, Jessica Diaz*

### **Deciding When to Uproot and Replant for Renewed Career Growth and Avoid Burnout**

*Stephanie Roth, AHIP-D*

# Contributed Content

Please note that all times in the Daily Program reflect Eastern Standard Time

## LIGHTNING TALKS

### Experiencing the Whole Systematic Review Process: Bridging Our Knowledge Gap

Tara Brigham, AHIP, Gwen Wilson, AHIP, Stephanie McFarland, Michele McGinnis, Cynthia Chelf, AHIP, Jennifer Schram, AHIP, Lisa Marks, AHIP, Dana Gerberi, AHIP, Larry Prokop, Leslie C Hassett, AHIP, Heather Jett, AHIP, Tariq Rahaman, AHIP

### Be Your Own Public Speaking Superhero: Finding Your Presentation Persona

Christine Andresen

### Outlining a Medical Library Internship Experience: Creating a Calendar for Prospective or Current MLIS Students

Tiffany Follin, AHIP-S, and MiaBeth Gorodetzer-Edelman

### Adding Poster Sessions to a Virtual MLA Chapter Annual Meeting Using Free Digital Archive Software

Cynthia Flanagan

### Training: Can One Size Fit All?

Amie Baltes, Victoria Trezona, and Ansley Stuart

### Strengthening Library Services with a Dedicated Advisory Committee: Establishment and Strategic Development

Kristen Burgess

### Are You Being Served? A Systematic Review Service Conceptual Framework To Promote Collaboration and Interprofessionalism

Lynn Kysh

### Data in Action: Creating a Dashboard Using Power BI to Demonstrate the Library's Value to Stakeholders

Phill Jo, Shari Clifton, and Tara Malone

### Creating Therapeutic Spaces in an Academic Library

Natalia Tukhareli

### Launching an Artificial Intelligence Special Interest Group: Building Knowledge in Rapidly Changing Waters

Judy Smith, Tyler Nix, and Sarah Barbrow

### 1:30 - 2:45 p.m. | Room 302

### Cultivating an Outreach Readiness Mindset

Sydni Abrahamsen, AHIP, and Melissa Wagner

### Exploring Health Insurance Literacy Research: Personal vs. Organizational

Emily Vardell, AHIP, and Paul Thomas

### A Library's Role in the Co-Creation of a DEI Book Club

Anne Jenkins

### From Research Guides to Curriculum Change: A Collaborative Approach to Advancing Health Equity Education

Hannah M. Schilperoort and Jennifer A. Silverman

### Providing and Promoting Open Access (OA) and Open Educational Resources (OER) Never Hurts! It Only Benefits!

Pamela Thomas Roots

### Experiences of People with ADHD in the United States Health Sciences Library Field

Lindsay Boyce, Kendra Godwin, Johanna Goldberg, and Marina Rosenfield

### Bridging Tradition & Innovation: Anatomy of a Puzzle

Emily Hannum

### Libraries and Patient Portal Assistance: Bridging Gaps in Skills and Service

Sydni Abrahamsen, AHIP, and Melissa Wagner

Thursday, May 1, 2025 | Hall of Exhibits | 4:30 – 6:00 p.m

## Artificial Intelligence

### 1 Use of AI in Information Services Delivery in Medical Libraries in Sub-Saharan Africa

Grace Ajuwon, Eunice Aliu-Aloko, Violet Ikolo, Oluwaseun Abiodun-Asanre, Samuel Bello, and Biliamin Popoola

### 2 A Multi-Model Evaluation: Harnessing Generative AI To Understand the State-of-the-Art of Literature Search Automation

Taneya Y. Koonce, Annette M. Williams, Dario A. Giuse, Jing Su, Mallory Blasingame, Poppy A. Krump, and Nunzia B. Giuse

### 3 Analyzing Consumer Health Search Results from Four Generative AI Models

Scott Johnson, AHIP, Catherine Johnson, and Ivan Portillo, AHIP

### 4 Database Usage Patterns in Existing Systematic and Scoping Reviews

Jennifer Westrick, AHIP

### 5 PubMed vs AI: Comparison of Search Results

Jennifer Westrick, AHIP, Lorena Juarez, and Schulyer Hilton

### 6 Exploring Cancer Survivors' Perspectives on AI Personalization and CAM: A Card-Based Co-Design Approach Using ISP

Elaine Kong and Aakash Gautam

### 7 From Barriers to Bridges: A Scoping Review of Inclusive AI for Equitable Pediatric Care

Xuan Nie, Elaine Kong, and Kuo-Ting (Tim) Huang

### 8 Generative AI for Systematic Reviews: Developing Effective Prompt Engineering Strategies for ChatGPT 4.0 in Health Librarianship

Nour El Ayoubi and Kuo-Ting (Tim) Huang

### 9 Asking the Ethical Questions: Critically Testing a Homegrown LLM at a University Medical Library

Katie Sweeney

### 10 Self-Curated Personalization of Medical Education in an Appalachian Medical School: Insights for Development of Artificial Intelligence Tools and Med

Anna Hughes, Joshua Eastman, Alex Pribanich, Garrett Douglas, Thomas Mosman, and Nitin Puri

### 11 Generative Artificial Intelligence in Medical Education: Introducing Generative AI in the Context of Evidence-Based Practice and Ethical Authors

Hannah F. Norton, AHIP, Borui Zhang, Ariel Pomputius, AHIP, Mary E. Edwards, AHIP, and Nina Stoyan-Rosenzweig

### 12 The Case of the Charming Clinician: Development of an Instructional Health Misinformation Escape Room

Kelsey Cowles, AHIP, Rebekah Miller, Rachel Suppok, and Sera Thornton

### 13 NLP-Driven Sentiment Analysis of Student Space and Wellness Needs in an Academic Health Sciences Library

Alexander M. Park, Christian Rajkovic, Lillian Huang, Audrey Huang, Sumaita Mahmood, Gregory Spaulding, and Marie Ascher

### 14 Exploring the Impacts of Artificial Intelligence (AI) in Medical Libraries

Leslie Golamb, AHIP, Julia Peters, Trevor Stratton, and Dot Winslow

### 15 Resources and Tools to Combat Fake Science in the Age of Artificial Intelligence

Xing Jian and Lauren H. Yaeger

### 16 Publishers' AI Requirements: A Review of Journals' Policies from One Institution's Publications

Amy Houck, Tierney Lyons, and Amy Allison

### 17 A Fork in the Road: Machine Learning Classifier or Methodological Search Filter to Identify Systematic Reviews?

Melissa Severn, Alissa Epworth, and Romney Adams

## Career Development

### 18 Collaborative Learning in Action: Onboarding Liaison Librarians for Evidence Synthesis

Brooke Olson, Merete Christianson, Ryn Gagen, Melissa Ernst, Sarah Jane Brown, Sana Siddiqui, and Nicole Theis-Mahon, AHIP

### 19 Pivoting with Purpose: From Statewide Gatherings to Virtual Spaces

Beth Auten, AHIP, Beverly Murphy, AHIP, FMLA, Heidi Reis, AHIP, and Sarah Wade

### 20 Developing a Coaching Plan to Help Employees Build a Bridge for Career Success

Charlotte Beyer, AHIP

### 21 Building Our Own Bridge: Paving the Way to New Promotion and Tenure Guidelines

Katie Bishop, Danielle Westmark, AHIP, Cindy Schmidt, and Erin J. Torell

### 22 Professional Coaching: A Bridge to the Future

Teresa L. Knott, AHIP, FMLA, Judith S. Cohn, Shannon D. Jones, AHIP, FMLA, Rikke Ogawa, AHIP, Emily Glenn, AHIP, and Becca Bartholomew



# Posters

Thursday, May 1, 2025 | Hall of Exhibits | 4:30 – 6:00 p.m

## 23 Census of Public Health Librarianship Within the United States

*Shenita Peterson, Carrie Baldwin-SoRelle, Jean McClelland, and Yolanda Strayhorn*

## Clinical Support

### 24 Your Voice, Your Library: Take the Survey!

*Kristen Burgess*

### 25 3-Step PubMed Expedite Article Request Form

*Manuel Pasos*

### 26 Hidden in Plain Sight: Creating Guides to Highlight Nursing CEU and Certification Resources

*Lena Bohman, Regina Vitiello, and Brendan Plann-Curley*

### 27 Rural Medicine Resources: Meeting the Needs of Rural Medicine Practitioners

*Elaine Powers*

### 28 Librarian Support for Hospital GME Programs: Evaluating a New Position

*Emmett Booth, Gary Kaplan, Abby L. Adamczyk, AHIP, and John Caruso*

### 29 Searching for the Best Medicine: A Hospital Library's Approach to Addressing the Information Needs of Pharmacy Staff

*Morgan Choate, AHIP, Alexander Lyubechansky, and Katie Jefferson*

### 30 Providing a S.H.I.E.L.D When Disaster Strikes: Librarians and Healthcare Providers Collaborate to Create Deployable Containers That Include Essential

*Ellen M. Justice, AHIP, Mary Everist, and Katie Neligan*

## Collection Management

### 31 Laying Foundations for Inventory and Deselection in an Academic Health Sciences Library's Print Collection: Challenges, Approach, and Goals

*Jeffery Wagner, Robyn Reed, AHIP, and Sharon Daugherty*

### 32 My Serials Checklist Manifesto: A Simple Tool to Deliver Consistent Results and Save Time

*James Michael Lindsay, AHIP-D, and Martha Earl*

### 33 Revitalizing the Print Collection at a Health Sciences Library: Bridging Space, Budget, and User Needs

*Rachel Helbing, AHIP, Stefanie Lapka, AHIP, and Jose-Luis Quintero*

### 34 What's in the Collection? A Collection Analysis of Underrepresentation in a Health Sciences Library

*Marisela Madrigal*

### 35 Power in Numbers-Cost Savings Through a Multi-Campus License

*Jeannine Creazzo, AHIP, and Brittany Haliani, AHIP*

### 36 Board Exam Prep Resource Trends in Academic Health Sciences Libraries Serving Colleges of Osteopathic Medicine Programs

*Joanne Muellenbach, AHIP, Hsinliang Chen, Harold S. Bright, AHIP, Lori Fitterling, and Kyle Robinson*

### 37 Strategic Integration of Health System and Medical School Libraries: A Case Study

*Patricia A Ulmer, AHIP, and Amy Allison, AHIP*

### 38 Improving Accessibility of Anatomy Physical Study Aids

*Michael Hopwood, Dorothy Berenbrok, Timber Weber, and Abby L. Adamczyk, AHIP*

### 39 Drawing a Crowd: Reaching Medical Students Through Graphic Medicine

*Megan Nance and Courtney Hadley*

## Consumer Health

### 40 MyChart: Leveraging Libraries as Partners in Patient Portal Access

*Ruby L. Nugent and Carole A. Durst*

### 41 A Reference-by-Mail Program to People Who Are Incarcerated: A Pilot Program

*Jean Johnson, AHIP, and Elisa Hernandez*

### 42 Booked for Wellness: Mental Health Kits for Academic Libraries

*Mary Catherine Ellis*

## Data Services and Management

### 43 The Index: Its Past, Present, and Future

*Annette M. Williams, Taneya Y. Koonce, and Nunzia Bettinsoli Giuse*

### 44 A Generalist Institutional Data Repository Offering Both Open and Restricted Access to Support NIH Data Sharing Compliance

*Seonyoung Kim, Marcy Vana, and Xing Jian*

### 45 Outcomes of a Multi-Year Data Internship Program for LIS Graduate Students

*Javier Martinez Rodriguez, Justin De la Cruz, Alisa Surkis, Nicole Contaxis, and Genevieve Milliken*

Thursday, May 1, 2025 | Hall of Exhibits | 4:30 – 6:00 p.m

## 46 Data Services Education for the Health Information Community

Justin de la Cruz, Alisa Surkis, Javier Martinez, Genevieve Milliken, Fred LaPolla, and Nicole Contaxis

## 47 Enhancing the Quality of Reference Services Through Insights of International Students at a Medical University Library

Hsiao-Fen Yu, Shu Yuan Siao, Yu-Ying Lee, Chi-Ju Chiu, Daisy Wang, Tzu-heng Chiu

## 48 From Discounts to Decisions: Researchers' Open Access Submission Trends and Library's Promotion Strategies

Shu-Yuan Siao and Tzu-heng Chiu

## 49 Bridging Bioscience Buildings of Past and Present Through Information Science

Dominic Levenseller-Watland and Thalia Lightstone

## 50 Analyzing Data Management and Sharing Plan Just-in-Time Edit Requests from the National Institutes of Health

Sara M. Samuel and Diane Lehman Wilson

## 51 Transforming Research Data Management and Advancing Open Science at NYCU Library with Dataverse

Hui-Heng (Carolyn) Wang, Wen-Hua Kuo, and Ming-Jiu Hwang

## 52 Development of a Lightweight Dataset Catalog with Digital Commons

Claire Warner, Amy Reese, and Marla Hertz

## 53 "Turning Feedback into Future: UX Assessment at MUSC Library"

Shabrina McPherson

## Fairness, Representation, and Belonging

### 54 From DEI to JEDI: The DEI Committees of MLA's Chapters

Adela V. Justice, AHIP, and Brenda Linares, AHIP

### 55 AAMLA: 25 Years of Surviving, Thriving, and Inspiring

Shannon Glover, AHIP, Shannon D. Jones, AHIP, FMLA, Tara Douglas-Williams, AHIP, and Beverly Murphy, AHIP, FMLA

### 56 Development and Validation of a Search Hedge for Transgender and Gender Diverse Populations in Ovid MEDLINE

Ryn Gagen

### 57 Delivering an Information Literacy Curriculum and Introduction to Librarianship to New York City High School Students

Andy Hickner, Terrie R. Wheeler, Jessica Boyle, Sarah Jewell, Michael Wood, and Diana Delgado

### 58 Stories That Heal: Bridging Minds and Mental Health with the Care and Custody Exhibition

Paris Whalon, Calantha Tillotson, and Melanie Dixon, AHIP

## Evidence-Based Practice

### 59 From Literature to Practice: Expanding the Librarians' Roles in Evidence-Based Medicine

Paria Aria, Alison Beshur, Mary Homan, Caitlyn Hood, Brooklyn Thomas, Erin Varney, and Valerie Warwas

### 60 Implementing Feedback in the Library Orientation Course: Librarians as Active Collaborators in the Medical Curriculum

Beatrice Calvert, AHIP, Emily Alleman, and Yue Ming, AHIP

### 61 Advanced Library Research in Evidence-Based Medicine: A Credit-Bearing Undergraduate Library Course

Colleen Foy, AHIP

### 62 EBM Express: Teaching Traditional Skills in a 2025 Way

Deborah L. Lauseng, Catherine Lantz, Cynthia Reynolds, and Carmen Howard

### 63 Designing the Perfect Library Sessions for Physician Assistant Evidence Based Medicine Education

Matthew Bridgeman

### 64 Osteopathic Research: Literature Trends and Librarian Insights

Lori Fitterling and Harold S. Bright, AHIP

### 67 Supporting Evidence-Informed Decision Making for Nursing QI Initiatives: A Partnership Between Nurse Scientists and a Clinical Informationist

Aida M. Smith, AHIP, Cynthia LaFond, and Val Hooper

### 68 Information-Seeking Behavior of Healthcare Professionals: A Scoping Review Protocol

Heather Canfield, Joseph Burt, and Joy Rodriguez

## Expert Searching

### 69 Enhancing Public Health Through Legislative Awareness

David Brown, Dana Abbey, and George Strawley, AHIP

### 70 Supporting Evidence-Based Policy Making Through Medical Literature Searches

Marielle McNeal and Janice Young

# Posters

Thursday, May 1, 2025 | Hall of Exhibits | 4:30 – 6:00 p.m

**71 Validating Search Strategies for Healthy People 2030's Leading Health Indicators: An Update on the PH/HA Caucus's Structured Evidence Queries Project**

*Samantha Guss, Anita Kuiken, Erin Wentz, Dani LaPreze, Erin Reardon, Laura Zeigen, and Courtney Pyche, AHIP*

**72 Biological and Medical Sciences Librarians Support Veterans Exposure Care to Environmental Hazards During Military Service**

*Janice Young*

**73 What's in a Name? Rebranding a Successful Systematic Review Service**

*Emilie Ludeman, Emily Gorman, Nicole Shelawala, and Yunting Fu*

**74 Conduct Systematic Reviews with Confidence: New Clinical-Trials.gov Tools and Guides**

*Christina Robinson, Jimithy Hawkins, Kylie E Hunter, Erica Lake, AHIP, Dana Abbey, Rebecca Brown, Margie Sheppard*

## Health Equity

**75 Collaboration Between Medical Library and Student Counseling Center**

*Yu-Ling Hsu, Yu-Ting Weng, and Lan-Chi Tzeng*

**76 What Does the Body Know? Nursing Students' Epistemic Beliefs About Embodied Health Misinformation**

*Brynnne Campbell Rice*

## Instruction

**77 A Quantitative Analysis of Classes Exploring Factors That Make Participants More Likely to Claim CE Credit**

*Jessi Van Der Volgen, AHIP, Rebecca Brown, Molly Knapp, Samantha Nunn, and Katie Pierce Farrier*

**78 Information Literacy for Public Health: Supporting Undergraduate Success with Asynchronous Canvas Modules**

*Krista Anandakuttan, Lizzy Borges, and Zia Davidian*

**79 Information Literacy Competencies of Zambia Postgraduate Students: A Case of the School of Medicine, Public Health, Health and Nursing**

*Mercy Wamunyima Monde, Emma M. Ndalameta, and Silumesii Kabilwa*

**80 Instilling the Value of Health Sciences Libraries Early**

*Jennifer DeBerg, Mary Thomas, and Sarah Andrews*

**81 "A Health Sciences Library by Any Other Name..." Continuing Library Services in a Time of Academic Transformation**

*Anna Crawford, AHIP, Jenn Monnin, and Ashley Purvis*

**82 Collaborating with a Pediatric Nurse Residency Program**

*Marquel Anteola, AHIP, and Ashley Brock, AHIP*

**83 Bridging the Gap: Building a Partnership with the School of Dentistry Office of Student Affairs**

*Melissa Ernst*

**84 Bridging Campuses: Collaborative Support for Nursing at a Public Research University**

*Pamela Hargwood, AHIP, Naomi Gold, and John Maxymuk*

**85 Bridging Borders: Enhancing Global Health Education Through a Scoping Review Pilot Program**

*Karina Kletscher, AHIP, and Judi Bergjord*

**86 Active Learning Combined with a Focus on Privilege and Cultural Nuance Enhances Public Health Student Engagement**

*Kelly Weigand*

**87 Bridging the Gap Between Submissions: Impact of Librarian Feedback on First-Year Medical Student Research Assignments**

*Natasha Williams, AHIP, Shalu Gillum, AHIP-D, Nadine Dexter, AHIP-D, Pamela Herring, AHIP-D, Deedra Walton, AHIP-D, and Emily Hannum*

**88 Medical Students Are Making Health-Related Content on Wikipedia Easier to Read**

*Terri Gotschall, AHIP-S, Emily Hannum, and Nadine Dexter, AHIP-D*

**89 Bridging History and Innovation: Introducing Advanced Technological Services at the Academic Medical Library**

*Katie Jefferson, Alexander Lyubachansky, and Morgan Choate, AHIP*

**90 Creative Use of Technology to Train Student Workers to Assist with Basic Chat Reference**

*Natalie Hutchinson, Irena Bond, Mariana Lapidus, and Erin Wentz*

## International

**91 Establishing the Evidence Base: Informationist Engagement in the Sub-Saharan Africa University Gender-Based Violence Research and Prevention Network**

*Gurpreet K. Rana*

## Leadership and Management

**92 Redefining Study Spaces: Meeting Evolving User Needs in a Post-COVID Library**

*Ashley Curran*

Thursday, May 1, 2025 | Hall of Exhibits | 4:30 – 6:00 p.m

**93 Bridging University and Hospital Libraries: Data-Driven Strategies for Developing a New Medical School**

*Dana Thimons, Nancy Hampton, and Kelly Fogarty*

**94 Uncovering the Narrative: How Our Library Led the Charge on a Historic Book Project**

*Rose Bland, AHIP*

**95 Restoring History: Launching a Collaborative Adopt-a-Book Program**

*Bridget Jivanelli, AHIP, Marcia Ennis, Randy Hawke, Joseph Engelmann, Pamela A. Kerns*

**96 All Hands-On Desk: Cross-Departmental Collaboration with a Single-Desk Service Model**

*Corey Purcell, Meredith Solomon, AHIP, and Yasmina Kamal*

**98 Connecting Librarians to Purpose Using Springshare's NPS® Tool**

*Kathy Koch, AHIP, Barbara Ruggeri, AHIP, and Karen Hanus, AHIP*

**99 Speaking Up Without Burning Bridges: Mastering the Art of Communication When Working with Systematic Review Teams**

*Stephanie Roth, AHIP-D*

## Outreach

**100 Promoting Library Services at Network of Care Locations**

*Catisha Benjamin, AHIP, and Marie St. Pierre, AHIP*

**101 How Traveling Exhibitions Can Build Engagement: An Analysis of Host Institution Follow-Up Reports**

*Alla Keselman, Katie Chan, Yamila El-Khayat, Erika Mills, and Elizabeth Mullen*

**102 Bridging the Gap: Filling State-wide Public Health Information Needs as a Partner Library**

*Gail Kouame and Justin Robertson*

**103 Community Harm Reduction: Library Outreach and Collaboration to End the Opioid Epidemic**

*Sharon Leslie, AHIP, Hannah Rogers, and Sandra Franklin*

**104 Building Bridges: The Role of Medical Librarians in Launching the CAGS Foundation**

*Mike Wells*

**105 Showcasing Scholarly Impact with Bibliometrics and Altmetrics**

*Robyn Reed, AHIP, and Nancy Adams*

**106 Getting the Word Out: Promoting Open Access Agreements to Health Science Professionals Through Collaboration and Outreach Initiatives**

*Angela McKee*

## Research

**107 Focal Points of Hyper Funding Researchers in Life Sciences**

*Yara H. Abdelgawad, E. Andrew Balas, Tiffany G. Townsend, and Clément Aubert*

**108 Using the MISO Survey at an Academic Health Sciences Library**

*Deirdre Caparoso, Alexander Leon Cupe, Leah Everitt, Sally Bowler-Hill, Ingrid Hendrix, Jonathan Eldredge, AHIP-D, FMLA, and Melissa Rethlefsen, AHIP*

**109 Chiropractic Educational Partners' Perceptions of Scientific Journals and Predatory Publishing: A Cross-Sectional Survey**

*Jennifer Smith, AHIP, Edward W. Murphy, AHIP, and Stacie A. Salsbury*

**110 Are Citations in Policy Documents Useful for Measuring Research Impact?**

*Konstantina Matsoukas, Jeanine McSweeney, and Robin O'Hanlon*

## Systematic Reviews

**112 Guiding Evidence Synthesis Teams: Review Project Management and Task Tracking**

*Annie Wescott*

**113 Bridging the Path: A Roadmap of Free Resources for Systematic Review Training**

*Caraline Annichiarico, Kayla Ashley, Amy Ferguson, Katie Pierce-Farrier, Kristalee Kennedy, and Charlotte Vandervoort*

**114 Systematic Review Service by the Numbers: A 10-Year Analysis**

*Emily F. Gorman*

**115 Benchmarking Evidence Synthesis Outputs and Librarian Support Efforts at a Newly Research-Intensive University**

*Kimberly R. Powell, AHIP, Patricia Hartman, and Kelly Weigand*



# Posters

## On-Demand Only

### Looking for the Helpers: A Content Analysis of Free Online Consumer Health Resources from Academic Non-Medical/Health Sciences Library Websites

*Christina L. Wissinger*

### Health Information Outreach to Rural Counties

*Margot Malachowski, Bennie Finch, Sarah Levin-Lederer, and Jessica Kilham*

### Delivering a Telehealth for Seniors Workshop

*Mary W. White and Katie McNeirney*

### Automatic Indexing Errors in PubMed: Sometimes the Apple Does Fall Far from the Tree

*Paije Wilson*

### Using Asana to Bridge the Gap: A Case Study on Streamlining Library Services

*Stephanie Henderson, Tiffney Gipson-Goodwin, Beth Reeder, and Lauren Robinson*

### Exploring the Value of a Practicum for Library Students Pursuing a Career in Health Science Librarianship

*Kolby Peixoto and Lauren Fletcher*

### Collaborate to Transform: Revolutionizing Library Workflows and Services with Alma Implementation

*Katherine Carlson, Li Ma, Uyen Nguyen*

### Subtle Shifts, Big Impact: Library Upgrades Inspired by Medical Student Feedback

*Erika Severson and Lauren Fletcher, AHIP*

### Blogs as Data: Using XQuery for Content Evaluation

*Eli Wachter and Elizabeth A. Mullen*

### Observed Forms of Cognitive Bias Among Health Information Professionals

*Jonathan Eldredge, AHIP-D, FMLA*

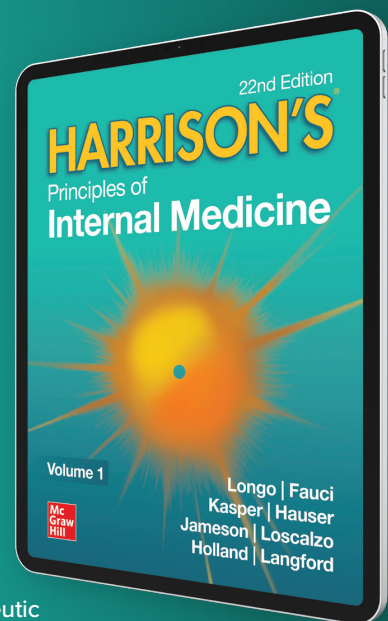


## The Voice of Clinical Reason

The full 22nd edition of *Harrison's*, the landmark guide to internal medicine, is nearly here. If you're a McGraw Hill Access subscriber, you have exclusive early access to content before anyone else.

### The complete edition will feature:

- Updated content reflecting the latest guidelines and recommendations including expanded chapters on New Treatments, Neurological Advancements, AI in Medical Practice, and Emerging Frontiers in Science & Medicine
- Net-new chapters on Physician Well-Being, Point-of-Care Ultrasound, Principles of Immunization, Symptom Control in Patients with Cancer, COVID & Other Coronavirus Infections, Desensitization, and more
- 3,000+ clinical, pathological, and radiographic photographs, diagnostic and therapeutic decision trees, and clear schematics and diagrams describing pathophysiologic processes
- Numerous atlases featuring curated collections of critical visual aspects of diagnosis and management



**Explore now at [mcgrawhill.info/H22MLA](https://mcgrawhill.info/H22MLA)  
and visit us at booth 411 to get the '411'**

## COLLECTION DEVELOPMENT

**Wednesday, April 30**  
**10:30 - 11:45 a.m. | Room 321**

### **From Contract to Collections: Bridging the Gap Through Negotiation**

Negotiation is an important skill for collection development librarians but is rarely taught in library school. Interpersonal skills and an understanding of negotiation tactics are crucial components to successful conversations with vendors and internal stakeholders. This session will cover approaches and tactics necessary in successful negotiations.

Learning outcomes:

- Gain an understanding of areas to negotiate related to collections (including license agreements, pricing, contracts, and beyond)
- Gain an understanding of strategies and tactics that are employed by vendors
- Attendees will leave with skills, tactics, and knowledge that they can use for successful negotiations with vendors and internal stakeholders

#### **Moderator:**

*Christy M. Hogan, MLIS*

#### **Panelists:**

*Linné Girouard, MLIS, AHIP, FMLA, Librarian, Houston Methodist Hospital System*

*Keith Pickett, MLIS, Associate Dean for Health Sciences and Director of the Matas Library of the Health Sciences, Tulane University*

*Carissa Tomlinson, MLIS, Manager of Library Services and Patient Education, Allina Health*

**Thursday, May 1**  
**1:30 - 2:45 p.m. | Room**  
**306 - 307**

### **Beyond COUNTER: Making Connections to Create a Story of Usage | Livestreamed**

The purpose of this session is to discuss and explore how various metrics – from

COUNTER to bibliometrics to impact measures – can be used to demonstrate library value and impact. Attendees will hear from three speakers with expertise in usage and bibliometrics who will share their experience working with library data. They will discuss challenges around how to integrate diverse data sources to craft narratives that highlight the impact of library resources on research and clinical outcomes. By the end of this session, participants will be equipped with ideas for effectively communicating with stakeholders and enhancing decision-making processes. This session is ideal for medical and health sciences librarians who work in collections assessment, leadership, or anyone interested in library metrics.

Learning outcomes:

- Attendees will gain an understanding of different usage metrics and reports, including how standards bodies are working to support the library community
- Attendees will leave with communication strategies relevant to their stakeholders
- Attendees will leave with skills, tactics, and knowledge about challenges and solutions at different institutions

#### **Moderator:**

*Emily Singley*

#### **Presenters:**

*Karen Gutzman, MA, MSLS, Head of Research Assessment and Communications, Galter Health Sciences Library & Learning Center, Feinberg School of Medicine, Northwestern University*

*Michelle Kraft, MLS, AHIP, FMLA, Director of Library Services, Floyd D. Loop Alumni Library, Cleveland Clinic*

*Tasha Mellins-Cohen, Executive Director, z-COUNTER Metrics and Founder, Mellins-Cohen Consulting*

**Friday, May 2**  
**9:00 - 10:15 a.m. | Room 321**

### **Hospital Mergers & Acquisitions: The Current Impact and Future Implications for Library Collections**

The rise in hospital mergers and acquisitions is directly impacting hospital and academic library collections. In this panel session, speakers will discuss the challenges and opportunities libraries face as the healthcare industry continues to consolidate. They will explore themes of advocacy, continuity of access, and licensing challenges.

Learning outcomes:

- Attendees will be able to identify effective strategies for communicating with various stakeholders
- Attendees will learn effective strategies for communicating with vendors
- Attendees will gain insight into assessing complex licensing agreements

#### **Moderator:**

*Elizabeth Jenkins, MA, MSLS*

#### **Panelists:**

*Daniel Burgard, MSLS, Vice Provost of Scholarly Information Management and University Librarian, University of North Texas Health Science Center*

*Basia Delawska-Elliott, MLIS, AHIP, Medical Librarian, Providence Library Services*

*Zemirah Ngow, MLIS, AHIP, Health Sciences Collection Strategist, University of California San Diego*

**Friday, May 2**  
**1:30 - 2:45 p.m. | Room**  
**306 - 307**

### **From the Cutting Edge: Emerging Themes in Collection Development | Livestreamed**

This session will feature three short talks on trending themes in library collection development. Presenters will explore the benefits and challenges of collecting unique library resources. Topics will include innovative uses of collection funds and investments in technologies such as

## DATA MANAGEMENT & SERVICES

an Anatomage table, models for acquiring and supporting bioinformatics software, and the creation of an emergency print collection to safeguard against cyber attacks and fluctuations in access to online information. A moderator will facilitate discussion and questions from the audience as presenters share their experiences and insights on supporting library users through unique collections.

Learning outcomes:

- Attendees will be able to assess potential technologies for use in their own libraries
- Gain an understanding of how and why libraries are strategically investing in non-traditional resources with collection dollars and collaborating with stakeholders for other funding sources
- Develop a framework for the unique needs of access to information resources by their users

### Moderator:

Jason Burton

### Presenters:

Rolando Garcia-Milian, MLS, Research and Education Librarian, Bioinformatics Support Hub, Harvey Cushing/John Hay Whitney Medical Library at Yale

Elizabeth "Liz" Jenkins, MA, MSLIS, Collections Strategies Librarian, Harvey Cushing/John Hay Whitney Medical Library at Yale

Liz Kellermeyer, MSLS, AHIP, Director of Library & Knowledge Services, National Jewish Health

Jessica Sender, MLS, MET, AHIP, Librarian, College of Nursing, Liaison, Department of Communicative Sciences and Disorders, Michigan State University

### Wednesday, April 30 10:30 - 11:45 a.m. | Room 306-307

Sponsored by:



ELSEVIER

ClinicalKey AI+

### AI, Health Data, and Librarianship: Strategies for Responsible Use | Livestreamed

Learn about how Artificial Intelligence (AI) in its various forms impacts the work we do and the researchers and clinicians we work with. How are generative AI tools created to remove bias? How can researchers use AI to better find and manage data? Our panel of noted speakers will help you become more informed about AI and its potential uses.

### Moderator:

Nakia Woodward

### Panelists:

Amanda Barry, MPH, Principal Clinical Analyst and AI Ethics Specialist, Elsevier

Ansuman Chattopadhyay, PhD, Director for Molecular Biology Information Services, Health Sciences Library System, University of Pittsburgh

Kristi Holmes, PhD, Associate Dean for Knowledge Management and Strategy, Feinberg School of Medicine and Director, Galter Health Sciences Library and Learning Center, Northwestern University

### Wednesday, April 30 3:00 - 4:15 p.m. | Room 306 - 307

Sponsored by:



ELSEVIER

ClinicalKey AI+

### The Spectrum of Data Librarianship: Exploring Diverse Roles and Practice | Livestreamed

As the landscape of information continues to evolve, data librarians play an essential role in managing, curating, and

facilitating access to a wide array of data types across various domains. Our expert panelists will represent diverse perspectives within the field, discussing their unique roles and responsibilities. From research data management and data curation to data visualization and preservation, each panelist will highlight the skills and challenges associated with their specific area of expertise. This interactive session will also provide ample opportunity for audience engagement, allowing participants to ask questions and share their own experiences in data librarianship. Whether you're an aspiring data librarian, an experienced professional, or simply curious about the field, this panel will illuminate the diverse roles and invaluable contributions of data librarians in today's information ecosystem.

Learning outcomes:

- Participants will be able to identify the need and responsibilities of a data librarian within their organization
- Participants will be able to articulate the importance of data literacy and user training.
- Participants will be able to prepare a position description for a data librarian considering local needs and ethical practices
- Participants will be able to assess trends in data management its value to the organization
- Participants will be able to identify potential partnerships and stakeholders in academia and industry

### Moderator:

Amy Lyons

### Panelists:

Caitlin Bakker, MLIS, AHIP-D, Discovery Technologies Librarian, Dr. John Archer Library and Archives, University of Regina

Lisa Federer, PhD, MLIS, Director, Office of Strategic Initiatives, National Library of Medicine

Margaret Henderson, MLIS, AHIP, Associate Librarian and Health Sciences and Research Data Librarian, San Diego State University

Jocelyn Swick-Jemison, MLS, Data Services Librarian, University of Buffalo

## DATA MANAGEMENT & SERVICES

**Thursday, May 1**  
**9:00 - 10:15 a.m. | Room 321**

Sponsored by:



**ClinicalKey** AI+

### Issues in Using Data FAIRly

Picture this: a patron asks you to find a dataset they can use for their research project. After scouring the web or perusing data repositories, you find a promising candidate. But how do you know that this dataset will fit your patron's research idea – what if it doesn't have the necessary variables, or can't be analyzed with software available at your institution?

Even if data is shared FAIRly (i.e., is Findable, Accessible, Interoperable and Reusable), it can still take work to

determine if it is usable by a given patron. In this workshop, three data librarians will share their expertise in answering data-related reference questions to help you navigate this scenario. We will discuss how to evaluate data from its codebook, including common ways data access is restricted. This workshop will include practical examples drawn from our experience working with health science professionals at our institutions and opportunities to practice your knowledge with hands-on exercises.

Learning outcomes:

- Outline key questions to ask during the data reference interview
- Name common data use agreements and how they interact with patron needs
- Assess the variables in a dataset for use in answering a research question
- Identify markers of data quality in a dataset description and documentation

### Moderator:

*Margaret Henderson, MLIS, AHIP*

### Presenters:

*Lena Bohman, MSLIS, Senior Data Management and Research Impact Librarian, Assistant Professor, Donald and Barbara Zucker School of Medicine at Hofstra/Northwell*

*Nina Exner, PhD, MLS, AHIP, Research Data Librarian, Virginia Commonwealth University*

*Marla Hertz, PhD, Associate Professor, Research Data Management Librarian, University of Alabama at Birmingham*

# AHIP

Academy of Health  
Information Professionals

Certified standard of professional education, experience, and accomplishment committed to career development for health information professionals.



➔ **Learn more at [mlanet.org/professional-development/ahip](https://mlanet.org/professional-development/ahip)**



## LEADERSHIP & MANAGEMENT

**Thursday, May 1**  
**9:00 - 10:15 a.m. | Room**  
**306 - 307**

### **Transforming Perceptions: Showcasing Your Library as a Value-Driven Partner | Livestreamed**

Are you wanting to learn how to showcase your value? This panel will be a conversation with a hospital library director, an academic library director and one of their hospital leaders. This session will be a moderated Q & A, around how the panel members have shown their value to their institution and what stakeholders are looking for from their libraries.

Learning outcomes:

- A better understanding of the needs of the Administrative folks with regards to data the Library folks can provide.
- Understanding the need to be proactive in librarianship - with the Admin, as well as the Physicians.
- Learning how experienced librarians view the ongoing interplay between the departments.
- Making sure inexperienced librarians get the big picture from the start

#### **Moderator:**

Angela Spencer, AHIP

#### **Panelists:**

*Michelle Kraft, MLS, AHIP, FMLA, Director of Library Services, Floyd D. Loop Alumni Library, Cleveland Clinic*

*Rebecca H. Napier, MBA, SHRM-SCP, Vice President, Finance and Administration, University of New Mexico Health Sciences Center*

*Melissa L. Rethlefsen, PhD, MSLS, AHIP, Executive Director, Health Sciences Library & Informatics Center, University of New Mexico Health Sciences Center*

**Thursday, May 1**  
**1:30 - 2:45 p.m. | Room 321**

### **Unleashing Leadership Potential: Leading from Anywhere**

Leadership isn't defined by titles—it's about action, influence, and initiative. This session is perfect for attendees who aspire to lead but don't hold formal leadership positions. Join a panel of former MLA Rising Stars as they share their unique journeys, insights, and practical strategies for making an impact, no matter where you are in your organization. Discover how you can harness your potential, build confidence, and lead from anywhere.

Learning outcomes:

- Attendees will be able to take inventory of their strengths for informal leadership, as well as areas they might grow.
- Attendees will be able to define leadership in terms of action, influence, and initiative instead of formal titles, and identify key characteristics of effective leaders. Additionally, attendees will learn practical strategies and techniques for making a meaningful impact in their organizations.
- Attendees will be able to interact with colleagues in an intentional and motivational way.

#### **Moderator:**

Rachel Walden

#### **Panelists:**

*Alexandria Brackett, MA, MLIS, Research and Education Librarian for Nursing, Cushing/Whitney Medical Library, Yale University*

*Sunny Chung, MLIS, AHIP, Health Sciences Librarian, Stony Brook University*

*Hilary Jasmin, MSIS, Medical Librarian and Information Specialist, Center for Evidence-based Policy, Oregon Health & Science University*

**Friday, May 2**  
**9:00 - 10:15 a.m. | Room**  
**306 - 307**

### **Speaking Their Language: Bridging the Gap Between Libraries and Users | Livestreamed**

Want to learn new ways to engage and market to your users? Join us for a session focusing on user engagement and marketing. How do you communicate value and engage with your patron communities? In what ways can you collaborate with them? How do you market your resources, services, and events in today's ever-changing digital landscape? Learn how to start building connections, create new or sustain existing relationships, and effectively engage with your users.

This session will consist of 3 panelists presenting for 15 minutes each about how they market to and engage with their users (both in-person & virtually) - weaving in stories and examples of what did and did not work and how they pivoted to increase engagement and meet their users where they are. Presenters will include librarians and information professionals from both hospital and academic settings; so wherever you work, this session is for you!

Learning outcomes:

- Explore how learning from users can inform your library work
- Gain different perspectives on how to overcome some common library communications challenges
- Build a toolkit of communication and outreach tools that can be implemented across different organizations

#### **Moderator:**

Meredith Solomon

#### **Presenters:**

*Erinn Aspinall, AHIP, Director, Health Sciences Libraries, University of Minnesota*

*Alice Nee Henry, Strategic Marketing Manager, The Ohio State University*

*Carissa Tomlinson, Manager of Library Services and Patient Education, Allina Health*

# Exhibitor Sessions

As of April 15, 2025. Check the App for real time updates.

## Sunrise Seminars

Early morning breakfast sessions with MLA '25 sponsors and exhibitors.

### Revolutionizing Research: Discover the Latest Innovations in Embase

Thursday May 1st, 7:30am - 8:45am

**Speaker:** Carlos Rodriguez Del Rio

Join us for an exciting seminar where we will unveil the transformative capabilities of Embase AI! You will see how this intelligent assistant can generate tailored queries and concise summaries for your research questions with ease. Embase AI makes it easier for new users to search through the large biomedical literature confidently. We will also explore our new results page, the integration of expanded content from ClinicalTrials.gov, and many more upcoming features designed to improve your research experience. All this will allow medical librarians to elevate their literature searches and support evidence-based practice like never before. Don't miss this opportunity to improve your research experience with Embase!

Sponsored by



### The Evolution of Evidence-Based Practice with Technology: Transforming the Modern Library

Thursday May 1st, 7:30am - 8:45am

Discover how librarians revolutionize healthcare through evidence-based practice (EBP). This session showcases librarians' crucial role in EBP, research, and quality improvement (QI). Learn how partnerships with clinicians unlock evidence and streamline workflows using tools like Ovid Synthesis. See how technology enhances integration, project management, and patient care for optimized outcomes.

Sponsored by



**Wolters Kluwer**  
When you have to be right

### Evaluation of Generative AI for Clinical Decision Support

Friday May 2nd, 7:30am - 8:45am

Ensuring the safe, responsible, and ethical application of GenAI in clinical settings poses challenges. Join us to learn about the evaluation methodology used to evaluate the performance of ClinicalKey AI and how it helps address these challenges. We will share insights from Elsevier's evaluation team's experience establishing and implementing a framework for assessing the correctness and potential harmfulness of responses generated by the conversational search engine embedded within the tool.

Sponsored by



**ClinicalKey** AI+

## Technology Showcase

### Introducing EndNote 2025: Level Up Your Research

Wednesday, April 30th 9:45am - 10:15am

**Speaker:** Gillian Neff

Join us for an exciting and informative session as we introduce EndNote 2025, the latest version of our leading reference management software. Learn about our new AI enhancements and updated tools, making EndNote 2025 the most powerful version yet. The session will include an overview of the EndNote 2025 software, showcasing how EndNote streamlines your reference and citation management and process.

Sponsored by



### Systematic Reviews Technology: Now and for the Future

Wednesday, April 30th 3:00pm - 3:30pm

Covidence leverages technology to significantly speed up systematic reviews. In this demo, we'll showcase new data extraction features, machine learning advancements for automation, and enhanced support for your patrons, including Single Sign-On (SSO), concierge services, and expanded educational resources.

Sponsored by



# Exhibitor Sessions

## Evolving for the Future of Digital Health

Thursday, May 1st 9:45am - 10:15am

BMJ Group has been shaping medical knowledge for over 180 years—pioneering the peer review process, being at the forefront of the EBM movement, and launching the first health science journal online. Innovation is in our DNA. As we honor this legacy, we're also embracing the future of digital health with solutions designed to transform healthcare decision-making. Join us for an exclusive look at our latest advancements, including our unique Comorbidities Manager and the new Clinical Intelligence tool, and hear why our approach to AI is more intentional than reactive.

Sponsored by  
**BMJ** Group

## Enhancing the User Experience with EBSCO

Thursday, May 1st 1:30pm - 2:00pm

**Speaker:** Andrea Spector

Andrea Spector, Director of Medical Sales, will discuss the new features available on EBSCO's enhanced User Interface designed to improve the user experience. Natural Language Searching streamlines information retrieval by enabling conversational language queries for complex research; AI Insights allow researchers to quickly understand data while introducing Generative AI within trusted resources; and EBSCO's unique PICOT search screen guides users through the clinical research process.

Sponsored by  
**EBSCO**

## Lunch and Learns

Lunch break with an opportunity to learn about products and services by MLA '25 sponsors and exhibitors.

## The Power of Partnerships: Achieving Greater Reach, Relevance and Resilience

Thursday, May 1st 12:00pm - 1:15pm

**Speaker:** Gail Kouame, MLIS

In this session, we will explore how libraries can harness the power of partnerships to enhance their impact and elevate their role within the community. Learn effective strategies for positioning your library as an essential investment to patrons, faculty, and administrators, even in challenging times.

Sponsored by  
**jove**

## Aligning With Your Institutional AI Goals: Strategies for Success in Medical Research

Thursday, May 1st 12:00pm - 1:15pm

As AI transforms medical research and information access, medical librarians' roles are more crucial than ever. This discussion examines the evolving AI licensing landscape and the need to understand AI applications' licensing requirements. Experts from Wolters Kluwer Health and NEJM will discuss AI licensing's impact on institutional policies, vendor agreements, and librarians' roles in AI adoption. Attendees will learn about AI's real-world applications in literature searches, systematic reviews, and clinical decision-making, equipping them to navigate AI resources effectively and ethically.

Sponsored by  
 **Wolters Kluwer**  
When you have to be right

## Empowering Research Through Responsible AI on ScienceDirect

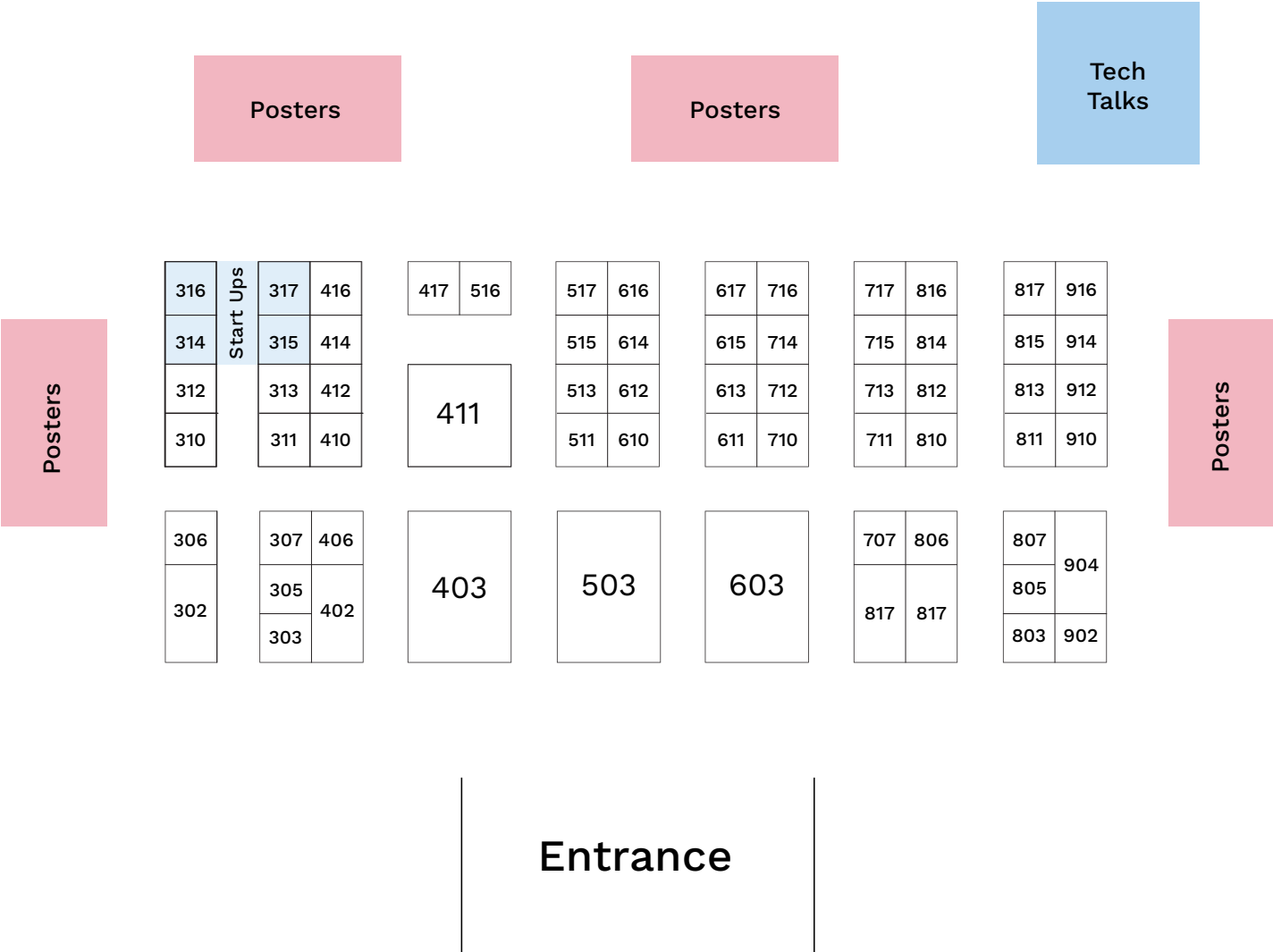
Thursday, May 1st 12:00pm - 1:15pm

Join this session to learn about Generative AI (GenAI) developments on ScienceDirect that are enabling researchers to explore, compare, and uncover trusted evidence from deep within the peer-reviewed literature. This event is ideal for library staff and anyone interested in the application of GenAI in full-text search and discovery. The ScienceDirect ambition is to make knowledge discovery more efficient and rewarding for researchers, faculty, and librarians.

Sponsored by  
  
**ELSEVIER**

# Exhibit Hall Map

## Food Court



David L Lawrence Convention Center Hall B



# Exhibitors

AAAS/Science	406
AMBOSS	417
American Academy of Pediatrics	414
American College of Physicians	515
American Psychiatric Association Publishing	513
American Psychological Association	712
Anatomage	302
Annual Reviews	307
Bioscientifica	312
BMJ Group	402
Cabells	715
CABI	412
CELUS	315
Clarivate	803
Coherent Digital	303
Covidence	710
Cultural Surroundings	410
Doody Enterprises, Inc.	612
D-Tech International USA LLC	306
EBSCO	503
Elsevier	904
Elsevier Health	403
GIDEON Informatics	810
HARRASSOWITZ	310
Health Affairs	815
IGI Global	316
Jack Farrell & Associates	314
JAMA Network	711
JoVE	610
Karger Publishers	811

Learner's Digest International	707
LibLynx	613
Lucidea	716
Mark Allen Group	313
Mary Ann Liebert, Inc.	611
Matthews Medical Books	614
McGraw Hill	411
Medical University of South Carolina Library	617
MLA	802
OpenAthens	807
Oxford University Press	910
PolicyMap	812
Proofing AI	805
Radiological Society of North America (RSNA)	516
Rayyan	317
RedacTek	511
Rowman & Littlefield	714
Sanford Guide	517
Sketchy	616
SLACK Journals	305
Springer Nature	806
TDNET INC	902
TDS Health	813
The Medical Letter	615
Thieme Publishers	703
Third Iron	713
VisualDx	416
Wiley	311
Wolters Kluwer	603

# MLA's Living Library

## What Happens at a Living Library?

- Each “book” is a person with lived experiences often met with stereotypes, prejudice, and misunderstandings
- As a reader, you have an opportunity to connect with someone who is different from you
- Ask any questions you may be too shy or not even sure how to ask
- Talk about topics we may not understand very well through those that have experienced them.

## How it Works

1. Take a look at the book titles and descriptions listed in the QR code
2. Select the books you want to read
3. Go to the Living Library registration desk to check out your book(s)

## Do you have any questions?

Contact Kelsa Bartley, [k.bartley@med.miami.edu](mailto:k.bartley@med.miami.edu), Chair, Fairness, Representation, and Belonging Committee



Need a health science book vendor? **Matthews is Your 1st Choice!**

# Matthews Medical Books

Experience • Great Service • Industry Knowledge

## SIGN UP FOR AN ACCOUNT TODAY!

- Competitive discounts
- Acquire books from over 4,000 publishers
- Purchase orders and credit cards accepted

## WEEKLY "NEW TITLE" SERVICES AVAILABLE

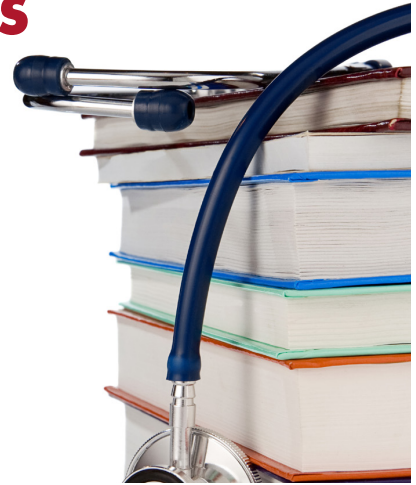
- Customer specific Approval Plans
- Subject based lists
- Standing Order program

For more information visit us @

**BOOTH #614**



[www.matthewsbooks.com](http://www.matthewsbooks.com)



A platform developed by  
doctors and loved by students

Get to know what your students love  
about AMBOSS

- ✓ Number of articles your students read on AMBOSS
- ✓ Popular topics your students are searching for
- ✓ Their favorite features on the platform

Request your school report in advance at  
[go.amboss.com/mla25](http://go.amboss.com/mla25) so it is ready for you  
to pick up at the booth #417

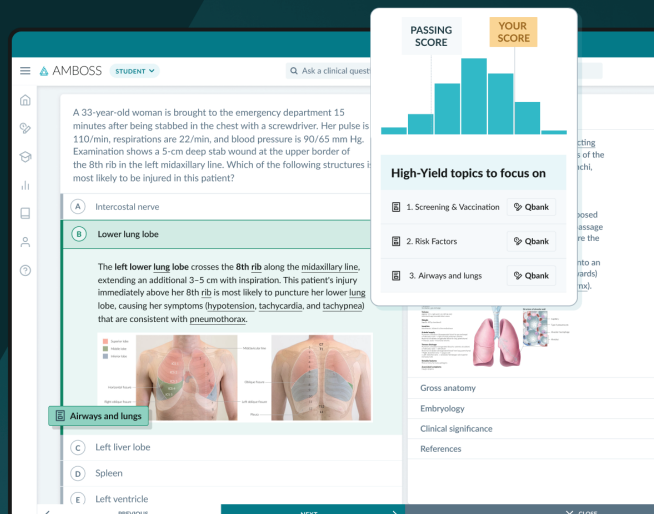


Complete coverage for foundational and clinical sciences

Knowledge library with over 1,200 clinical articles

Performance analytics to monitor the progress

Over 9,000 case-based questions



# mla'25

BRIDGING  
TRADITION &  
INNOVATION

APRIL 29 - MAY 2 — #MLANET25 — PITTSBURGH

## Looking for Something to Do in Pittsburgh?

Check out these recommendations  
from the 2025 Local Assistance  
Committee and Visit Pittsburgh.



**2025 Pittsburgh  
Dining Guide**



**Pittsburgh Pirates  
Tickets**



**Official MLA '25 Blog**

