

PRELIMINARY PROGRAM

PLATINUM SPONSOR



Looking back,

forging ahead

MLA | SLA '23

Detroit | May 16-19 | Hybrid | #MLASLA23



Thank you to our MLA | SLA '23 Sponsors!

PLATINUM



SILVER



BRONZE



Updated as of February 9, 2023

Table of Contents

MLA SLA '23 Invitation Message, Committees	4
MLA 125 Celebration.....	5
Continuing Education Courses	6
Symposia	7
Featured Speakers	8-9
MLA Meeting Experience	10-11
Registration Information	12-13
Hotel Information, Financial Assistance	14
Map.....	15
Membership Activities	16
List of Exhibitors.....	17
MLA and SLA Contributed Content	18-25



COVID Protocols: Health & Safety

Attendees' health and safety is important to us and we will use science-based information for MLA | SLA '23 safety protocols. Please watch the website and your registration confirmation for the latest information about Health & Safety Protocols for the conference.



MLA | SLA '23: Looking Back, Forging Ahead

MLA | SLA '23 Invitation letter from NPC chairs and SLA Program Committee Members

We are excited to invite you to attend MLA | SLA '23! The collaboration between the Medical Library Association (MLA) and the Special Libraries Association (SLA) for this year's conference means that this meeting will give you MORE: More content, more choices, more colleagues. The National Program Committee looks forward to joining you for this meeting and **Forging Ahead** together.

The sessions shown here on pages [18-23](#) achieve the goals of the MLA/SLA collaboration: to broaden our understanding of the information profession and to share our knowledge with colleagues from different backgrounds. In addition to the contributed content sessions, you'll see a new approach to the incredibly successful Collection Development & Resource Sharing Symposium, which was held at last year's MLA '22 conference in New Orleans. We are also introducing a new Leadership Management Symposium, another opportunity for you to enrich your career.

But before we start **Forging Ahead**, join us for some **Looking Back**. During this meeting, MLA kicks off its 125th anniversary year! MLA's anniversary year begins in Detroit and will extend through the end of the annual conference in Portland, Oregon (May 18-21, 2024). Be sure to make some time to visit the MLA booth and watch slideshows, enjoy the memorabilia, eat anniversary cake at the conference closing, and celebrate our history together.

The planning groups have all been working hard and we look forward to welcoming you to your MLA | SLA '23 conference. Whether you decide to join us virtually or in Detroit, you're sure to have a valuable experience.

Best Wishes,



Kate Flewelling
Cochair, 2022 MLA
National Planning
Committee



Ryan Harris
Cochair, 2022 MLA
National Planning
Committee



Nabi Hasan
SLA Program
Committee
Liaison



Andy Shimp
SLA Program
Committee
Liaison

2023 National Program Committee

Kate Flewelling, AHIP *Cochair*
Ryan Harris, AHIP, *Cochair*
Nabi Hasan, PhD, PDF, FNEB, FSLA,
SLA Program Committee Liaison
Andrew Shimp, *SLA Program
Committee Liaison*
LaVentra E. Danquah, AHIP, *Local
Assistance Committee Chair*
Roxanne Bogucka, AHIP
Frances Chu
Rian Debner
Carolyn Ching Dennison, AHIP
Steven Douglas, AHIP
Martha Earl, AHIP
Gregory Laynor
Emily S. Mazure, AHIP
Terri Ottosen, AHIP
Katie Prentice, AHIP
Rose L. Turner
Alessia Zanin-Yost, AHIP
Shannon D. Jones, AHIP, FMLA (*MLA
Board of Directors Liaison*)

Conference Planning Staff

Katelyn Arnold
Kevin Baliozian
Jordan Burghardt
Debra Cavanaugh
Kate Corcoran
Paige Elbert
Monica Evans-Lombe
Barry Grant
Tomi Gunn
Kate Hernandez
Stuart Hales
Hannah Jeon
Mary Langman
Maria Lopez
Mark Primuth
Sabrina Sheth
Aubrey Swanson
Jim Westwood

2023 Special Program Committee: Collection Development & Resource Sharing

Michael A. Wood, Chair
Amy Bleich
Steven Douglas, AHIP (*National
Programming Committee Liaison*)
Tara Douglas-Williams, AHIP (*MLA
Board of Directors Representative*)

**(SPC Collection Development
& Resource continued)**

Donna S. Gibson
Shannon Gordon
Jean Gudenas, AHIP
Stella Hillegass
Ramune K. Kubilius, AHIP (*Special
Libraries Association Liaison*)
J. Michael Lindsay, AHIP
Sarah McClung
Rob McKinney
Jen Ostrosky
Andrew Shimp (*SLA Program
Committee Liaison*)
Andrea Spector
Janna C. Lawrence, AHIP, FMLA,
(*Board of Directors Liaison*)

**2023 Special Program
Committee: Leadership**

Mark Berendsen (MLA)
Ann Cullen (SLA)
Elizabeth Downey (SLA)
Kristi L. Holmes (MLA)
Janna C. Lawrence (MLA)
Leigh Milligan (SLA)
Chris Shaffer, AHIP (MLA)

Local Assistance Committee 2023

LaVentra E. Danquah, AHIP, Chair
Michelle B. Bass, AHIP
Beth Callahan
Mary Jo Durivage
Alexia D. Estabrook
LaTeesa James
JoAnn Krzeminski
Sandra Irene Martin, AHIP
Meghan McGowan
Steven J. Moore, AHIP
Ophelia T. Morey
Yolanda Reader
Merle Rosenzweig
Joel Scheuher
Stephanie Stebens
John E. Sterbenz, Jr.
David Stewart
Stephanie M. Swanberg, AHIP
Jill Turner
Serena Vaquilar
Gayle A. Williams, AHIP
Wendy Wu



MLA turns 125 on May 2, 2023

The 125-Year Retrospective Task Force has planned activities that celebrate and memorialize our diverse heritage throughout the anniversary year, beginning MLA | SLA '23 in Detroit (May 16-19, 2023) through the end of the Annual Conference in Portland, Oregon (May 18-21, 2024).

Planning a year-long celebration takes the strong commitment, energy, and work of an army of volunteers. More than 50 members have supported MLA's anniversary events by serving on these committees:

- **MLA 125-Year Retrospective Task Force**
- **MLA History Committee**
- **MLA Vision 2048 Task Force**
- **MLA Archives Task Force**

Join us for key celebrations, starting with an anniversary toast with MLA President Shannon Jones, AHIP, FMLA at the opening of the Hall of Exhibits.

And yes, there will be cake at the closing ceremony as we officially launch our year-long celebration.

Visit the MLA-125 Anniversary Booth in the Exhibit Hall, where we will display photos, memorabilia, and other artifacts.

Don't forget to stop by the Photo Booth in the Exhibit Hall to memorialize your experience with a photo or two.

Take a trip down memory lane with a self-guided tour at the Convention Center featuring historical markers that highlight significant MLA milestones, people, awards, and events.

On behalf of all the Task Forces helping to plan for our anniversary year, we look forward to celebrating with all of you!

MLA | SLA '23 Continuing Education Courses

Sign up for these add-on CE courses when you register for MLA | SLA '23

Tuesday, May 16, 2023 | All times listed in local eastern time

Effectiveness and Efficiency in Exhaustive Searches (CE100)

Noon - 6:00 p.m.

\$395 MLA/SLA Member | \$510 Nonmember

Learn a unique, efficient, and effective method for conducting exhaustive searches! Demonstrations and hands-on exercises will introduce you to the method. Practice in Ovid Medline, Embase.com, or PubMed under the guidance of experienced information specialists will hone your skills. You'll leave the course able to create complex searches checked for completeness and translated between databases and interfaces much faster than with traditional methods.

This is a classic MLA searching course and has sold out the last three times we've offered it.

This course is an elective for the Level I Systematic Review Searching Specialization.

Developing a Collection for All Your Patrons: A Workshop on Writing a Collection Development Policy (CE200)

1:00 p.m. - 3:00 p.m.

\$155 MLA/SLA Member | \$200 Nonmember

Does your library have a collection development policy? Can it guide your budgeting and enable you to serve all your patrons? Working from your current policy or a template, you'll start revising or creating a policy and leave with the skills, guidance, and resources you'll need to complete a sound, contemporary collection development policy that serves all your patrons.

Through presentations, small group discussion, and practical exercises, you'll understand the importance of a policy to your library, what a policy should address, and how to use a policy to guide your library services. You'll also learn about resources for assuring diversity of content in your collection.

Conducting Difficult Conversations: Improving Workplace Effectiveness, Relationships, and Satisfaction (CE400)

1:00 p.m. - 3:00 p.m.

\$155 MLA/SLA Member | \$200 Nonmember

Your ability to engage in difficult conversations can improve your effectiveness and sense of well-being as an employee, team member, and supervisor. Learn the steps to holding productive conversations and establishing an internal quiet confidence no matter the situation.

Attending this course will help you see new possibilities for your workplace life, acquire new communication skills, and develop the confidence to hold difficult conversations.

You'll develop a plan for approaching situations you have ignored or unsuccessfully addressed. You'll gain insight into what makes conversations difficult and what can ease tensions. And you'll learn techniques that will give you a greater chance of achieving results that are good for you and your partner in the conversation.

You'll leave the course with resources, new skills, and a greater confidence in your ability to conduct difficult conversations thus making your workplace one in which everyone can thrive.

Research for the Non-Researcher (CE500)

1:00 p.m. - 5:00 p.m.

\$295 MLA/SLA Member | \$380 Nonmember

Are you interested in conducting research but don't know where to begin?

This course will help you gain a solid understanding of how to complete a research project, whether it's a small in-house project or a randomized controlled trial!

You'll not only learn how to ask a question that can be answered by research, but you'll also learn about study designs and methods, as well the steps needed to take a study all the way up to the point of publication and dissemination. You'll walk through a real-world case study that will demonstrate each step in the process, making the course relatable for information professionals from all backgrounds. Librarians who are new to the profession or who are new to conducting research are ideal candidates for this course.

This course will focus on Evidence-Based Library and Information Practice (EBLIP) and using research to advance our profession and the work we do.


ANNOUNCING**SHIFTING INTO SECOND GEAR:**

The 2nd Symposium on Collection Development & Resource Sharing

Building on the success of the first collection development & resource sharing symposium at MLA '22, Shifting into Second Gear: The 2nd Symposium on Collection Development & Resource Sharing will be part of MLA | SLA '23 in Detroit. It is free to all MLA | SLA '23 in-person attendees. The Symposium is designed for health sciences librarians, information professionals in all areas, and publishers at all levels of experience and knowledge. The program committee is planning sessions on:

- Open Access
- Trends and Tools in Collection Development & Resource Sharing
- Library/Publisher Relationships
- Diversity, Equity, Inclusion, & Accessibility
- Resource Cost Sharing
- Resource Management

Our thanks to the special programming committee members who are developing the symposium.


ANNOUNCING

The Symposium on Leadership and Management

The Symposium on Leadership and Management will be part of MLA | SLA '23 in Detroit. It is free to all MLA | SLA '23 in-person attendees. The Symposium is designed for health science librarians and information professionals in all areas and at all levels of experience and knowledge. The program committee is planning sessions in a multitude of formats to engage and expand on this topic. Below is a sample of topics to be covered:

- Conflict Resolution
- Diversity, Equity, Inclusion, & Accessibility
- Evidence-Based Practice
- Leadership in Times of Polarization and Change
- Leadership Agility
- Stakeholder Alignment

Our thanks to the special programming committee members who are developing the symposium.

Featured Speakers



Janet Doe Lecture

Michelle Kraft, AHIP, FMLA

Michelle Kraft, AHIP, FMLA, is the director of Library Services at the Cleveland Clinic Floyd D. Loop Alumni Library where she coordinates library resources and services for the hospitals in the Cleveland Clinic Health System. Michelle started her career as a reference librarian, an electronic resources librarian, and then became a “Jill of all Trades” as a community hospital librarian.

During this time, Michelle developed an interest in the use of technology, user experience, and social media within medical libraries, which led to her launching her blog kraftylibrarian.com, an exploration of items of interest to medical librarians. As an early adopter of social media, she helped pioneer the use of bloggers and Twitter at the Annual Meeting as a method to connect and inform members and attendees of meeting events and activities. Michelle is an active member of MLA. She has served on the Board of Directors and as MLA President.

She is also a Distinguished Member of the Academy of Health Information Professionals and is an MLA Fellow. She continues to promote the use of technology to discover information, communicate, and demonstrate the positive impact hospital libraries have on medicine and research.



McGovern Lecture

Terri Givens

Terri Givens is currently a professor of Political Science at McGill University and is the founder of the Center for Higher Education Leadership and Brighter Professional Development.

Terri is the author of the book *Radical Empathy: Finding a Path to Bridging Racial Divides*. Beyond *Radical Empathy*, she is the author of books and articles on immigration policy, anti-discrimination politics, and comparative race politics.

As an accomplished speaker, author, consultant, and mentor, Terri is using her platform to develop leaders’ understanding of the importance of diversity and encourage personal growth through empathy.



Joseph Leiter NLM/MLA Lectureship

Craig Robertson

The Joseph Leiter NLM/MLA Lectureship was established in 1983 to stimulate intellectual liaison between MLA and the National Library of Medicine (NLM). Lectures are chosen for their ability to discuss subjects related to biomedical communications. The lecture is presented every other year at NLM and in alternating years at the association's annual conference.

Craig Robertson is an associate professor of communication studies at Northeastern University. He has a Ph.D. from the Institute of Communication Research at the University of Illinois, Urbana-Champaign. An award-winning author, Robertson researches the history of information. He focuses on the relationship between paper and information, specifically how the recording, classification, and storage of information on paper affects not only who gets to handle and access information, but also how information is conceptualized as something people can use.

The Atlantic described his most recent book, *The Filing Cabinet: A Vertical History of Information*, as a "captivating history." In addition to writing two monographs and editing two volumes of essays, Robertson's research has been published and reviewed across a wide range of fields and disciplines including communication studies, design studies, library and information science, history, surveillance studies, immigration studies, and legal history/policy. An internationally recognized scholar, Robertson has been interviewed by multiple media outlets including the New York Times, National Geographic, NPR, BBC, and the Australian Broadcasting Corporation.



MLA | SLA '23 Schedule at a Glance

(Local eastern time)

7:00 :30 8:00 :30 9:00 :30 10:00 :30 11:00 :30 12:00 pm

Tuesday

May 16

On-demand Virtual Content Available				
				Continu

Wednesday

May 17

On-demand Virtual Content Available				
Separate MLA & SLA Breakfasts	Opening & Leiter Lecture	Contributed Content Sessions	Comm	
		Symposia Content		

Thursday

May 18

On-demand Virtual Content Available				
Exhibitor Sunrise Seminars	Hall of Exhibits & Technology Showcases			Exhibit & Learn
	Grab & Go Breakfast	Contributed Content Sessions	Janet Doe Lecture	Lunch Hall of
		Symposia Content		Joint P Sessio of Exhi

Friday

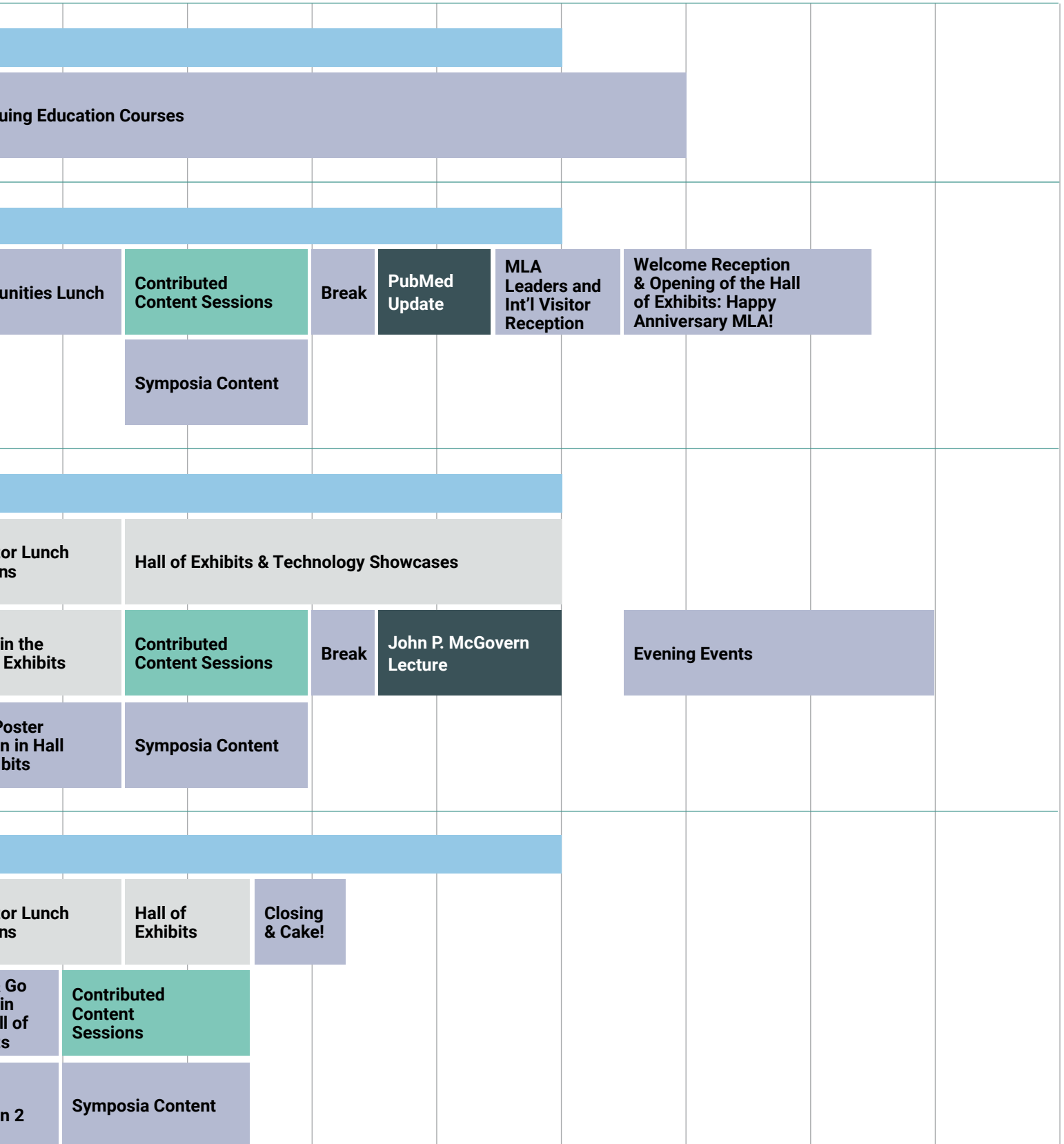
May 19

On-demand Virtual Content Available				
Exhibitor Sunrise Seminars	Hall of Exhibits & Technology Showcases			Exhibit & Learn
	Grab & Go Breakfast	Contributed Content Sessions	NLM Update	Grab & Lunch the Ha Exhibit
		Symposia Content	Contributed Content Sessions	Poster Sessio

■ Asynchronous On-Demand
 ■ Live Content Sessions (select sessions will be livestreamed; to be announced)

■ Livestreamed
 ■ In-Person Only
 ■ Exhibitor Focused (in person)

:30 1:00 :30 2:00 :30 3:00 :30 4:00 :30 5:00 :30 6:00 :30 7:00 :30 8:00 :30



MLA | SLA '23 Registration Information

Please refer to the [Registration](#) information pages for more details, including submitting requests for accessibility or special services, payment details, and information about confirmation of registration.

Early Bird Registration

(for full-experience, in-person registrations)

Register by April 14, 2023, to receive the early-bird discount savings for all full experience in-person registrations.

Member Discounts

(all registrations)

Individual MLA and SLA members in good standing are eligible for discounted individual rates, which save you more than \$200 over nonmember meeting fees. To qualify for member rates, your MLA or SLA membership for 2023 must be current at the time of registration; nonmembers may create an account and join on the respective organization's website ahead of registering for the virtual or full-experience in-person conference.

MLA Institutional members or SLA Organizational members

MLA institutional members and SLA Organizational members may choose to select bulk registration options for multiple staff at an additional discount. See facing page for details and visit the MLANET registration information pages for instructions.

As a service to the profession, members of other affiliate groups qualify for MLA | SLA '23 member registration rates; if you are not a member of MLA or SLA but belong to any of the affiliate organizations listed here, you may so indicate during the online registration process to receive member rates:

- American Association of Law Libraries (AALL)
- Arbeitsgemeinschaft für Medizinisches Bibliothekswesen (AGMB/German Medical Library Group)
- Association for Health Information and Libraries in Africa (AHILA)
- Association for Library and Information Science Education (ALISE)
- Australian Library and Information Association (ALIA)
- Canadian Health Libraries Association/Association des bibliothèques de la santé du Canada (CHLA/ABSC)
- European Association for Health Information and Libraries (EAHIL)
- Japan Medical Library Association (JMLA)
- Korean Medical Library Association (KMLA)
- Medical Library Association of Nigeria
- Taiwan Medical Library Association (TMLA)

Cancellations

All cancellations for any meeting registration or CE course must be submitted via email to MLA@mcievents.com. Meeting cancellations received by April 14, 2023, are subject to a \$50 fee. You will be assessed a \$50 fee for each CE course change or cancellation. However, MLA will honor written requests to transfer meeting registration or CE registration to another person without charge.

After April 14, 2023, MLA will give refunds only for documented family or medical emergencies. Refunds will be processed within six weeks after the meeting.

Onsite Registration Center

Sponsored by



Meeting materials and badges will be distributed at the MLA | SLA '23 Registration Center at Huntington Place. You will be required to show proof of any health safety protocols before you can obtain your badge. We strongly encourage early online registration to speed your way through the registration process.

The MLA | SLA '23 Registration Center will be open during the following hours:

Tuesday, May 16	8:00 a.m.–6:00 p.m.
Wednesday, May 17	7:00 a.m.–6:00 p.m.
Thursday, May 18	7:00 a.m.–6:00 p.m.
Friday, May 19	7:00 a.m.–Noon

Presenter In-Person Registration Discount

MLA and SLA member presenters who will be attending MLA | SLA '23 in person in Detroit may be eligible for a \$75 in-person registration discount. Discounts are available as follows:

- Up to 2 presenters per in-person presentation/paper/poster
- Up to 4 presenters per in-person Immersion or Education Session
- The presenter discount is not available in combination with existing registration discounts such as an institutional bulk registration or student registration.

Presenters will receive registration instructions when conference registration opens in February 2023.

Registration Rates for Individuals

General rates are noted below. Other registration options are noted on [MLANET](#).

MLA SLA '23 Registration Rates for Individuals	Full Experience (In-Person + Virtual)		Virtual Only
Early-bird rate available for registrations made by March 31, 2023	Early-Bird (ends 4/14/23)	Regular (after 4/14/23)	Anytime
Individual – MLA or SLA Member	\$775	\$890	\$465
Individual – General/nonmember	\$1,007	\$1,160	\$620
Individual – MLA or SLA Student Member (50% discount on virtual)	\$543	\$620	\$233
Individual – MLA Member - Emeritus, Retired, Unemployed, Lower Dues (50% discount on virtual); SLA Member – Retired, Unemployed, Full member outside North America (50% discount on virtual)	\$543	\$620	\$233
Individual – Hardship*	N/A	N/A	N/A

*limited no-charge registrations after jury review of application

Bulk Registration Rates for Institutions & Organizations

Support your staff members with hundreds of hours of professional development content, available exclusively to MLA | SLA '23 attendees for a full year!

Select your desired options [here](#) and we'll send you a customized invoice with your selections.

- Bulk registration purchases may not be combined with other discounts for individuals, such as student, presenter, or lower-dues rates.
- Bulk purchases automatically provide member rates for attendees in your institution who are not members of MLA or SLA.
- These discounted rates only are available for group purchases by MLA Institutional and SLA Organizational members.

Prices Updated 10/28/22	Virtual only	With full experience in-person add-on*
Group of 5 – 9 (10% off virtual member rate)	\$419 per person (save \$46 per member/\$201 per nonmember attendee)	+ \$310, or \$729 per person
Group of 10 – 14 (15% off virtual member rate)	\$395 per person (save \$70 per member/\$225 per nonmember attendee)	+ \$310, or \$705 per person
Group of 15 – 19 (20% off virtual member rate)	\$372 per person (save \$93 per member/\$248 per nonmember attendee)	+ \$310, or \$682 per person
Group of 20 + (25% off virtual member rate)	\$349 per person (save \$116 per member/\$271 per nonmember attendee)	+ \$310, or \$659 per person

* The "full experience" in-person add-on fee covers direct costs of materials, room rentals, transportation, food and beverage, and other amenities provided to attendees onsite. It is not discounted.

Hotel Information

Venue

Detroit Marriott at Renaissance Center

400 Renaissance Drive, Detroit, MI 48243

Rates

Standard Room rate: Single/Double Occupancy | \$224.00
Watch [MLANET](#) for additional information.

*Hotel guests in Detroit pay an additional 15% in applicable state and local taxes on their room charges at time of check-out.

Beware of Unauthorized Hotel Solicitations

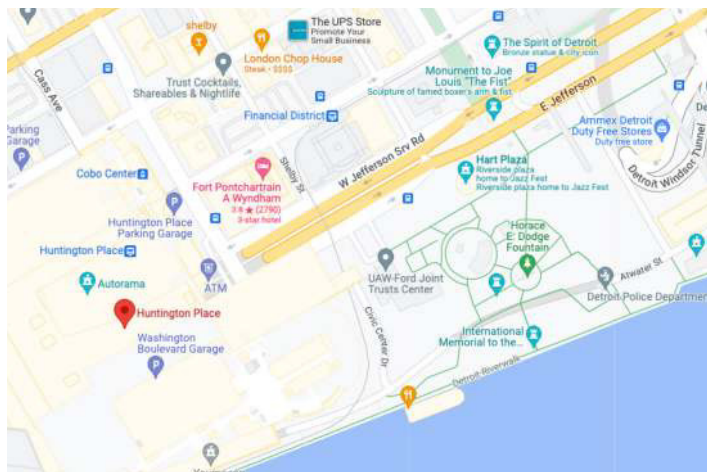
Each year we receive reports that other companies are posing as official vendors for conference hotel reservations. If you are contacted by other third-party companies offering hotel assistance or attempting to obtain your hotel reservation number, do not provide information.

Please be aware they are not endorsed by our event and may attempt to cancel your reservation, then ask for credit card or other information to steal your identity. Entering into financial agreements with these companies can have costly consequences and are not protected by event management.

Hotel and Convention Center

Huntington Place

1 Washington Blvd, Detroit, MI 48226



Location courtesy of Google Maps

Transportation

MLA will provide transportation throughout Wednesday, Thursday, and Friday for attendees between the hotel and Huntington Place. Access to the Detroit People Mover and the riverwalk will also be available.

Financial Assistance

for MLA Members to Attend MLA | SLA '23

MLA makes financial assistance available to help MLA members attend its annual conference. Be sure to check with local [chapters](#) for additional funding opportunities.

In-Person Conference Grants

- Travel grants funded through MLA grant endowments:
 - [Ysabel Bertolucci MLA Annual Conference Grant](#)
 - [EBSCO/MLA Annual Conference Grant](#)
- The grant recipient will be reimbursed up to \$1,000 for actual travel and conference-related expenses.

Key Application Dates

- December 6: applications open
 - round one submission notifications will be sent on December 6
- January 31: applications close at midnight (central)
- February: jury review and Board approval
- March 15: notifications will be sent to all applicants
- April 14: early-bird registration ends at midnight (central)

Priority Consideration

- The applicant is a first-time attendee at an in-person MLA annual conference.
- The applicant is presenting (or has submitted) a paper, poster, or lightning talk for this annual conference.

Eligibility

- The applicant must:
 - be a member of MLA (2023 paid membership) - see [membership options](#).
 - be currently employed as a health information professional.
 - have between two and five years of experience as a health sciences librarian at the time of the annual conference.
 - complete an application including a 200-word statement.
- No more than one awardee from any given institution will be awarded a travel grant in a single year.

See Bertolucci and [EBSCO](#) for further details.

Submit an Application

- Choose the 2023 MLA Annual Conference Travel Grant application form.
 - One application is used for both Bertolucci and EBSCO grants. No need to apply twice.
- Once saved, the application form remains open for changes or to upload supporting documents until January 31, 2023, 11:59 p.m. (CST).
- Incomplete and late submissions will not be considered.

Have a question? [Contact MLA Headquarters](#).

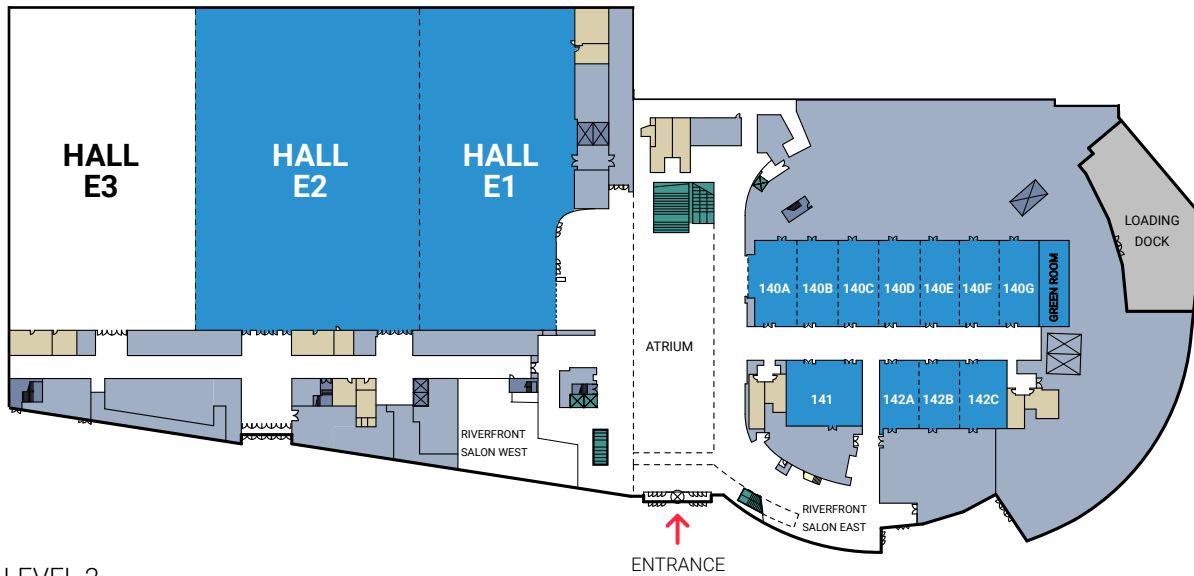
Financial Assistance for SLA Members to Attend MLA | SLA '23

SLA members should reach out to SLA for more information on financial assistance.

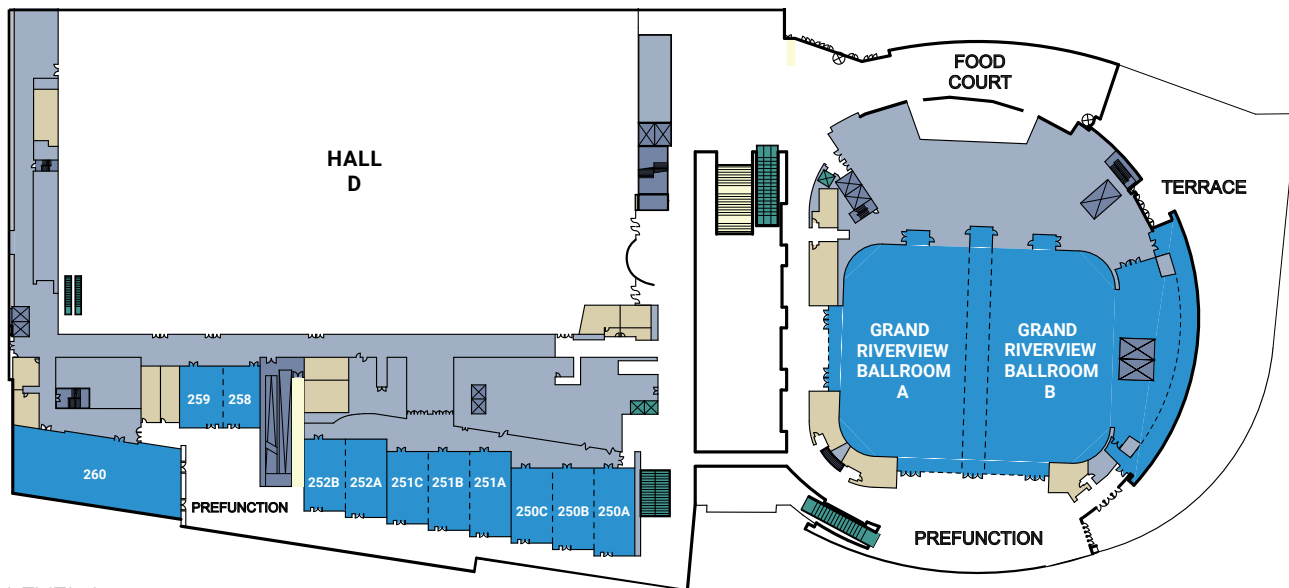
Huntington Place Maps

[CHECK OUT THE 360 TOUR ONLINE!](#)

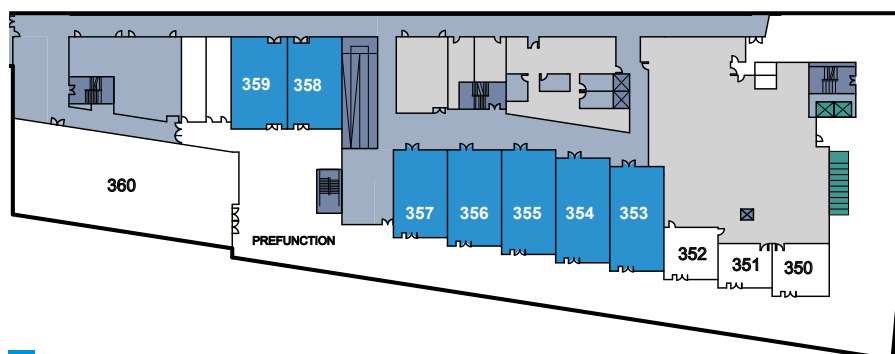
LEVEL 1



LEVEL 2



LEVEL 3



■ MLA MEETING SPACES

Membership Activities

Colleague Connection

Colleague Connection pairs first-time attendees with members who are experienced with the MLA conference. If this is your first MLA conference and you could use help navigating your meeting experience, or if you already know your way around an MLA annual conference and would like to help a newer member/first-time attendee, please sign up! Contact Tomi Gunn at tomi.gunn@mlahq.org for more information.

New Member/First-Time Attendee Events

Are you a new member or attending your first MLA, SLA, or joint conference? Please join us for breakfast and learn more about MLA or SLA while meeting new colleagues! To receive an invitation to either MLA or SLA events, please check the new member/first-time attendee box when you register. This will ensure that you receive an invitation which will be emailed about four weeks before the meeting. You must RSVP to gain admittance.

Community Events Lunch

Join us for a community lunch where we will bring together MLA | SLA attendees both by geographical area and those who practice in a unique discipline of special librarianship. For those communities that have signed up for community events in-person in Detroit, we will have a table to connect at this luncheon. Everyone is welcome to attend and encouraged to connect with any community they are interested in.

MLA & SLA Connections Booths

Stop by the MLA & SLA Connections Booths to learn more about MLA and SLA programs and member benefits, get your questions answered, speak your mind in member polls, participate in contests and raffles, and more!

MLA | SLA Resumé Clinic

Sign up to have an experienced colleague review your cover letter, resume, or CV, conduct a mock interview with you or just talk about the job search. Participants will have up to 30 minutes with their reviewer. The Resume Clinic is available during Career Center hours on Wednesday and Thursday during the meeting. Reviewees should submit any materials for review in advance during sign up. Participants will be contacted with their appointment time before the annual meeting.

Meeting Resource Room

For your convenience, a photocopier, two Windows-based computers, and office supplies will be available.

Career Center Hours:

Wednesday, May 17, 10:30 a.m. – 5:00 p.m.

Thursday, May 18, 10:00 a.m. – 5:00 p.m.

Exhibitors

As of January 16, 2023

Company

BOOTH

AAAS/Science	316	IOS Press	401
Accucoms	214	JAMA Network	600
AIP Publishing	210	JoVE	325
American College of Physicians	217	Leopard Solutions	221
American Mathematical Society	520	Lucidea	512
American Pharmacists Association (APA)	208	Mary Ann Liebert, Inc. Publishers	313
American Psychological Society	213	McGraw Hill	515
Anatomage	215	OCLC Online Computer Library Center	416
Annual Reviews	501	OpenAthens	500
Bentham Science Publishers	511	Optica Publishing Group (formerly OSA)	414
BMJ	315	OverDrive Professional	216
Cassidy Cataloguing Services, Inc.	220	Overleaf	320
Clarivate - Web of Science	611	Radiological Society of North America (RSNA)	524
Doody Enterprises	412	Rittenhouse Book Distributors Inc.	509
Duke University Press/Project Euclid	322	Royal Society of Chemistry	321
EBSCO	405	SIAM - Society for Industrial & Applied Mathematics	420
Elsevier Health	207	SLACK Incorporated	604
Future Science Group	617	Soutron Global	507
Global Financial Data	423	SPIE - International Society for Optics and Photonics	421
GIDEON	505	TDS Health	503
IDC	413	Third Iron	415
IET	417	Wiley	606
IFIS Publishing	509	Wolters Kluwer	305
IOP Publishing	212	World Scientific Publishing	602

MLA Contributed Content

CLINICAL SUPPORT

Librarians are essential to high-quality clinical outcomes. Elevate your practice to support health professionals at the point of care, combat health misinformation, expand outreach, and more.

PAPER PRESENTATIONS

Research

- **Evidence-Based Design of Vaccine Hesitancy Information Resources for Health Care Providers**
- **Staying Current In-Patient Care: How Physicians in Medically Underserved Areas Gain Knowledge for Health Care Decision-Making**

Program Description

- **Clinical Support in the Hospital Library: Automating Reference and Patron Management with Customer Service Software Tools**
- **Coral Calcium, Coconut Oil and Corgis: Leveraging the Hospital Library to Combat Health Misinformation in the Clinical Setting**
- **Making Inroads: Outreach to Pharmacy Residents**
- **The Re-engineered Core Clinical Journals Filter: What It Is, How to Use It, and Why to Use It**

EDUCATION

Librarian educators never stop learning. Develop your skills and knowledge in teaching evidence-based practice (EBP), critical appraisal, engaging learners using technology, innovative pedagogies, health literacy, and more.

IMMERSION SESSIONS

Professional Competencies, Information Literacy, and You: Leveraging Curriculum Mapping to Advocate for Library Instruction

Are you interested in doing more information literacy instruction, but aren't sure how to talk about its value in a way that administrators and faculty can understand? Our experts in curriculum development

are here to help! With a panel discussion on curriculum mapping and information literacy offerings, plus a hands-on opportunity to map your program's courses and specialties to professional competencies, this session will give you a blueprint for using competency-based curriculum mapping to expand and advocate for your instructional offerings.

Sponsors: Libraries in Health Sciences Curriculums Caucus, Pharmacy and Drug Information Caucus and Medical Library Education Caucus

Seeing Isn't Believing: Identifying Visual Health Misinformation and Results from a Pilot Class

Discussion of health literacy instruction and the identification of health misinformation often centers around fact-checking or debunking written materials. However, identifying misleading visualizations and imagery is a vital skill for navigating the current health information landscape. This session will increase your confidence in analyzing visual information and empower you to pass that knowledge along to your communities. We will share results from the pilot of a new class developed for a general university audience and other practical ideas for library programming.

Teaching Critical Appraisal through Small Group Learning: A Systematic Review Class Approach

In this session, participants will experience an adaptable, interactive approach to teaching critical appraisal of systematic reviews. Participants will be guided through the preparation and materials needed to deliver the class, after which they will experience the active learning elements of the class from the learner's perspective, ending with a reflection on the experience and discussion of the lesson's adaptability to different institutions and programs.

Sponsors: Systematic Reviews Caucus and Libraries in Health Sciences Curriculums Caucus

The Limit Does Not Exist: Leveraging Technology to Engage Learners

This immersion session will provide a foundation for this lesson transformation through active demonstration of the technologies being discussed. A panel will discuss a variety of ways they leverage technology to engage different learners in evidence-based practice materials. Attendees are invited to BYOI (bring your own instruction) and come prepared with either an existing lesson plan or a potential idea for one. Attendees will be encouraged to share their successes, failures, and questions as presenters moderate a virtual brainstorming session to iterate lesson plans to better leverage various teaching technologies. Attendees will leave the immersion with a component enhanced through instruction technology, which could take the form of live assessments via polling tools, a gamification idea, a video component, and more!

Sponsors: Pharmacy and Drug Information Caucus and SLA's Pharmaceutical and Health Technology Division

The Third Dimension: Supporting Curriculum through 3D Printing in Your Library

This presentation will discuss the increased use of 3D printing in educational settings. 3D printing facilitates learning, creativity, and problem-solving. In addition, we will cover a brief history of 3D printing and the benefits/potential issues of having a 3D program at our library.

An instructional session of preparing and painting 3D take-home models for learning anatomy will begin our session and will continue during the panel discussion. A small group exercise will conclude our session by generating ideas for use at each participant's home institution.

Sponsors: A.T. Still Memorial Library-A.T. Still University and Stratasys

PAPER PRESENTATIONS

Research

- Attitudes on Data Reuse among Residents in an Urban Internal Medicine Program
- Whole-Task Assignment for Pre-clinical Students: Assessing EBM Skills before Clerkships
- Osteopathic Medical Student Attitudes towards Research: Consumers or Creators?
- Escaping the Mundane: Using a Virtual Escape Room to Assess Epidemiological and Biostatistical Concepts before STEP 1
- Perceptions and Behaviours of First Year Health Sciences Undergraduate Students Conducting Online Research
- How Do Medical Students Approach Critical Appraisal? Results from a Mixed-Methods Study
- “You Need to See It”: Attitudes and Preferences of Health Sciences Librarians regarding Assessment of Evidence-Based Medicine via an Objective Structured Clinical Examination
- An Analysis of Publications regarding Scholarly Activity among Osteopathic Education Institutions
- Mobile Technologies for Learning among Medical Graduates
- Effectiveness of a Narrated PowerPoint Video as an Instructional Method for Bibliographic Database Searching

Program Description

- A New Normal: Pivoting Strategies for Technology Engagement in Libraries
- Combining Conceptual and Practical Intensive Learning – an Innovative Approach to Professional Development with the Data Services Continuing Professional Education (DSCPE)
- Developing Educational Materials on the Medicalization of Race
- Escape the Lecture: Using a Virtual Escape Room Activity during Library Instruction for Medical,

Nurse Anesthesia, and Physician Assistant Students

- Forging Data Skills: A Collaboration to Offer the Carpentries to Multiple Institutions
- Help Your Library Patrons Understand Clinical Trials: A Clinical Trials Program for Rural Public Libraries
- Learning from Medication Errors: Leveraging a Journal Scan Assignment to Teach Medication Safety
- Let’s Make a Deal: Gamification of Literature Searching
- Putting the Fun in Fundamentals: Developing a New Course for Health Sciences Research Data Management
- The Changes That Lie Ahead: Teaching the History of Dentistry with Rare Materials
- Using ThingLink as an Educational Roadmap for Postsecondary Learners Undergoing Knowledge Syntheses

HEALTH EQUITY & GLOBAL HEALTH

Librarians believe that access to health information and health literacy are fundamental to achieving health equity in a global setting. Increase your knowledge and develop your awareness by participating in inspiring MLA | SLA '23 sessions on those topics.

IMMERSION SESSIONS

Forging Ahead: Key Insights on Global Health and Equity from around the World

In this immersion session, health information professionals from around the world will share their global health & equity projects and discuss their experiences, challenges, and successes. The session will be formatted in a Living Library format, with presenters grouped by global health & equity topics that participants will be able to “check out.” Participants will have the opportunity to check out individual topics and converse with the living

books (presenters) and gain an understanding of the connections between health and equity across the globe. By bringing health information professionals together from around the world in a Living Library format, participants and presenters will have the opportunity to discuss health equity and global health issues and engage in open honest discussions.

Sponsors: International Cooperation Caucus and Social Justice and Health Disparities Caucus.

PAPER PRESENTATIONS

Program Description

- Activating Public Health Library in the Midst of a Pandemic: Experience from Nigeria Centre for Disease Control
- Combating Health Misinformation: Training Medical Learners How to Disseminate Information to the Consumer
- How Academic and Special Libraries Can Support Community Health Literacy Education through Technology
- Pathways of Engagement for an R2 Campus with the All of Us Researcher Workbench
- Telehealth in Libraries: An Opportunity for Community Service

INFORMATION MANAGEMENT

MLA | SLA '23 offers powerful and fun opportunities to develop your information management skills and knowledge. Heighten your performance in open access, data sharing, data management, and more.

IMMERSION SESSIONS

NIH Data Management and Sharing Policy: Education and Outreach

The new NIH Data Management and Sharing Policy has created new challenges and opportunities for librarians at institutions receiving NIH funding. This immersion session will center on the new policy in terms of outreach and education. It will include

MLA Contributed Content

INFORMATION MANAGEMENT

challenged current infrastructure and the need for more institutional support to meet the educational demands of this new mandate. The structure of the immersion session will be a moderated panel with an open forum for Q&A and will serve as a venue to discuss questions and concerns about the policy.

Sponsor: Data Caucus

The Critical Role of Librarians in Enterprise Data Management

This panel discussion will cover the critical need for library and information science skills within enterprise data management programs. We will discuss how the effective development of metadata standards, controlled vocabularies, and information architecture allow companies to derive faster, more accurate, and more ethical value from the vast volumes of data to which they have access. Topics covered will include the role of metadata in data classification and privacy management, the development of data cataloging as a new skillset, and the growth of metadata management roles within organizations. Attendees will understand how library and information science knowledge and skills can translate into business and public sector data management roles.

Sponsors: SLA's Data Community

PAPER PRESENTATIONS

Research

- **Technical Services Librarians in the Medical Library Association**
- **Subjected: Investigating the Impact of MeSH Terms on Underrepresented Groups**
- **The Role of Health Sciences Libraries in Supporting Consent Standards for Medical Image Publication**
- **Health Science Libraries Policy Support Preparedness for the Implementation of the 2023 NIH**

Data Management and Sharing (DMS) Policy

- **Planning for Data Services: Researcher Perspectives on Data Management and Sharing**
- **Opening Soon: Potential Impacts of the OSTP Mandate on the Biomedical Literature**
- **Advancing the Role of Libraries in University-Wide Electronic Research Notebook Conversations at a R1 Institution**

Program Description

- **An Exploration of Workflows for Monitoring Open Access Publishing at the University of Michigan**
- **Building across Silos: Integrating Specialized Data Tools with a Library Data Catalog**
- **Creating Recommended Practices for Retractions: An Update from the NISO CREC Working Group**
- **Developing and Accessing Data Workshops Supporting Local and Global Research and Service Projects**
- **Is It Possible to Determine Citation Meaning with Machine Learning?**
- **It's Complicated: Collaborating for National Institutes of Health Data Policy Changes across an R1 Institution**
- **Making the BRAIN Initiative FAIR**

CONTINUING EDUCATION COURSE

Tuesday, May 16, 2023,
1:00 p.m.–3:00 p.m.

CE200 Developing a Collection for All Your Patrons: A Workshop on Writing a Collection Development Policy

Does your library have a collection development policy? Can it guide your budgeting and enable you to serve all your patrons?

Bring your policy or use a template and leave the class with guidance, resources, and skills on how to create a contemporary collection development policy for any library.

INFORMATION SERVICES

Librarians have an inexhaustible interest in improving their information services skills and knowledge! Boost your performance with the latest in systematic reviews, searching, data services and more.

IMMERSION SESSIONS

Planning for the NIH Data Management and Sharing Policy: Infrastructure

The new NIH Data Management and Sharing Policy has created new challenges and opportunities for librarians at institutions receiving NIH funding. This immersion session will center on how to prepare for the new policy in terms of infrastructure and institutional support. It will include panelists who can speak about how they have expanded their service model, worked with institutional partners, identified repositories, and developed resources to address the new policy requirements. It will also include a discussion on how the policy has challenged current infrastructure and the need for more institutional support to meet the demands of this new mandate. The structure of the immersion session will include a moderated panel, a breakout session, and an open forum for Q&A. In total, this immersion session will serve as a venue to discuss questions and concerns about the policy.

Sponsors: National Center for Data Services and Data Caucus

Systematic Review Services: What Works Best for You and Your Users?

When it comes to systematic review services offered by libraries, one size does not fit all. One must consider institution type, librarian expertise, patron demand, available resources, among other considerations, when deciding how robust a systematic review service to offer. During the panel discussion, librarians from a variety of settings will describe their systematic review programs to illustrate the range of possibilities.

Attendees will then break into round table discussions with specific topics related to a systematic review service (e.g., how to get started; memorandums of understanding; patron education; engaging stakeholders).

Sponsor: Systematic Reviews Caucus

PAPER PRESENTATIONS

Research

- **Scoping the Systematic Review Landscape: Service Level Fluctuations at Health Sciences Libraries**
- **The Role of Libraries and Librarians at the Intersection of Public Health and the Arts**
- **"I Wish There Was a One-Stop Shop for a Lot of This": Participant Design of an Infertility Consumer Health Resource**
- **Improving LibGuides at a Health Sciences Library Using Feedback from Focus Groups and User Experience Testing**
- **Patron and Librarian Perspectives of a Long-Standing Health Science Liaison Librarian Program**
- **Integrative Health-Related Information Needs and Interests of MLA Members**
- **Development and Validation of a Database Filter for Study Size**
- **Preprints in Dentistry and Oral Medicine: Trends in Submission, Citation, and Publication**
- **Systematic Searching for the Social Determinants of Health**

Program Description

- **Eliminating Barriers to Publishing Case Reports in Open-Access Journals for Medical Trainees**
- **Forging Ahead with the NAHRS Nursing Essential Resources List**
- **Forging Collaboration: Centering the Library in Coordinating Education on the NIH Data Management and**

Sharing Policy at an Academic Medical Center

- **Forging Connections through Collection: Reinvigorating Community Engagement with a Graphic Medicine Collection**
- **Learning from Each Other: Results from the First Year of a Peer-Reviewed Literature Searching Project**
- **Mediating Copyright Permissions for Integrating Questionnaires and Scales into the Electronic Medical Record in an Academic Health Sciences Center**
- **StudyWell at HSL: Forging Campus Partnerships to Foster Student Wellness**
- **Translation of Systematic Review LibGuide Content Using Plain Language and Scientific Writing Best Practices**
- **Using Monthly Book Lists to Showcase Library Resources with an Emphasis on Work-Life Balance, Marginalized Communities and Patient Care**
- **What Is My Affiliation? Fostering Faculty Engagement and Institutional Affiliation in Publication Authorship**

CONTINUING EDUCATION COURSE

Tuesday, May 16, 2023,
12:00 - 6:00 p.m

CE100 Effectiveness and Efficiency in Exhaustive Searches

Learn a unique, efficient, and effective method for conducting exhaustive searches! Demonstrations and hands-on exercises will introduce you to the method. Practice in Ovid Medline, Embase.com, or PubMed under the guidance of experienced information specialists will hone your skills. You'll leave the course able to create complex searches checked for completeness and translated between databases and interfaces much faster than with traditional methods.

INNOVATION & RESEARCH PRACTICE

Librarians are at the cutting edge of innovation and research. Expand your knowledge and practice with the latest developments in a broad range of high-impact research studies and techniques.

IMMERSION SESSIONS

Understanding and Applying the Evidence-Base in Library and Information Science

The session will include a brief didactic session, followed by interactive roundtable discussions, and conclude with a think-pair-share activity. Participants will gain a more solid understanding of what Evidence-Based Library and Information Practice is. Through roundtable discussions, participants will work with others who have similar interests to develop ideas for projects to do in their libraries. They will leave the session with more confidence to approach EBLIP projects as well as with having a connection to peers who they may collaborate with on future projects.

Sponsors: Clinical Librarians and Evidence Based Practice Caucus, Research Caucus, Medical Library Education Caucus, and Public Health/Health Administration Caucus

PAPER PRESENTATIONS

Research

- **Search Filters Designed to Identify Black Persons Living in the United States**
- **Library Faculty and Staff Education Program Survey on Artificial Intelligence**
- **Cross-Discipline Collaboration: Medical and Law Librarians Identifying and Correcting Uses of Law Databases in the Medical Literature**
- **Developing and Validating the Nursing Student Misinformation Attitudes, Confidence, and Knowledge Assessment Tool**
- **Mapping New Landscapes: Comparing Web of Science, Scopus,**

MLA Contributed Content

INNOVATION & RESEARCH PRACTICE

and Dimensions for Reporting Research Impact of New Global Diabetes Research Center

- Consolidating and Delivering Comprehensive Library Services Following a Health Care System Merger or Acquisition: The E-delphi Research Experience

Program Description

- “Can You Turn Down the A/C?” Using Free Response Assessments to Gather Medical Student Feedback
- A Library Sponsorship Program to Support Independent Student Research on High Performance Computers
- Advocating for the Value of Health Sciences Librarians
- Creating Discipline Specific Systematic Review Guidance for Food Science
- Deepening Research Capacity of Health Sciences Librarians: Effectiveness of the MLA Research Training Institute (RTI) Online Program
- Development of an Introductory, Online, and Open Research Curriculum
- Expanding Library-Based Research Support through Innovative Interdisciplinary Services: Academic Research Consulting and Services (ARCS)
- Looking Back and Forging Ahead with a New Systematic Review Service
- Measuring the Impact of a Research Impact Challenge

CONTINUING EDUCATION COURSE

Tuesday, May 16, 2023,
1:00 p.m.–5:00 p.m.

CE500 Research for the Non-Researcher

Are you interested in doing research but don't know where to begin? This course is the place for you! You'll gain a solid understanding of how to complete a research project and develop skills that will help you contribute to your profession and further your career.

Broaden your leadership in publishing, diversity, equity, communication, new librarian roles, advocacy, and more.

IMMERSION SESSIONS

Defining Your Library Value: Successes and Failures

It's crunch time: your boss wants you to prepare a report and/or presentation on what value your library/information center brings to the organization. What do you do? Do you prepare a bunch of charts and throw some numbers around? Do you quickly gather some testimonials and hope the qualitative thing works?

Defining your value in the library relies so much on knowing what will resonate with administrators. Creating a tailored appeal can make all the difference.

In this deep dive into defining value in the information field, presenters will talk about their successes and failures in making that case. What has worked? What hasn't? What will they try the next time they get called into this same meeting?

PROFESSIONALISM & LEADERSHIP

Attendees will hear real-life examples of defining library value. This session will also help create best practices around tactics like report-writing, determining ROI, and how to become a better advocate for your services.

Sponsor: SLA's Leadership & Management Development Division

How to Work Effectively with Journal Editors and Peer Reviewers

A panel made up of two journal editors, one from the Journal of the Medical Library Association (JMLA) and the other from the Journal Education Libraries, and two peer reviewers will provide an understanding of the publishing process and how that can culminate in the publication of an article. The editors will explain the role of an editor and will discuss that role in relation to their journal and how submitted manuscripts are selected. The two peer-reviewers will provide a brief explanation of peer review and focus on their specific journal.

Sponsors: Research Caucus, Scholarly Communication Caucus, Medical Library Education Caucus, and SLA's Academic and Education Group

Redefining Professionalism: Reflection on What Professionalism Looks like in 2023

Professionalism as a term and approach has historically been weaponized in an effort to maintain the status quo throughout the information profession, including within libraries. Join us in this immersion session to unpack what professionalism historically has represented and who benefits from being considered a professional by default. Learn with us about the importance of framing

professionalism in a more equitable, inclusive way by individually redefining professionalism as well as strategizing how to support everyone who works in libraries, so they feel empowered as professionals.

Sponsors: Professionalism and Leadership Hub, Hospital Library Caucus, Pharmacy and Drug Information Caucus, Social Justice and Health Disparities Caucus, and Latinx Caucus

PAPER PRESENTATIONS

Research

- Progressing from Diversity, Equity, and Inclusion (DEI) Dialogs to Inclusive Actions: Preliminary Assessment of the Medical Library Association (MLA) Reads Book Club
- “Next Gen”: Leadership in the 21st Century!
- A Scoping Review on Diversity, Equity, and Inclusion Initiatives for Health and Medical Library Workers
- Analyzing Changes in Work-from-Home Policies for Academic Medical and Health Science Librarians
- Individual Advancement in Library Workforce Planning: Are We Growing the Community?

- **Looking Back to Look Forward: 50 Years of Educating Health Sciences Librarians**
- **Hardback Life: The Impact of a Hospital Book Club on Staff Empathy and Comradery**

Program Description

- **A Sensory Room Pop-Up: Supporting Student Wellness in the Library**
- **Advocacy Resources for Hospital Librarians – Hospital Library Caucus LibGuide**
- **Completing a Major Renovation in a Global Pandemic**
- **Customizing Faculty Success to Showcase Librarian Work in an Academic Health Sciences Library**
- **Developing a Culture of Research in a Health Sciences Academic Library**
- **Forging Ahead after the Shake-Ups**
- **Forging the Future: Building a System to Cultivate a Cohesive and Collaborative Library Team**
- **Free Money: Reevaluating, Reassessing, and Removing Barriers to Chapter Scholarships**
- **Healthcare & the Humanities: A Program for Healthcare Associates Hosted by the Medical Library**

- **In the Library with a Paintbrush: Artwork as a Pathway to Community Engagement and Wellness**
- **Libraries and Data Ethics: Teaching a Data Ethics Course to a National Audience**
- **Reflecting on Working-from-Home While Forging Ahead to the Hybrid Library Workplace of the Future**

CONTINUING EDUCATION COURSE

Tuesday, May 16, 2023, 1:00 p.m.–5:00 p.m.

CE400 Conducting Difficult Conversations: Improving Workplace Effectiveness, Relationships, and Satisfaction

Your ability to engage in difficult conversations can improve your effectiveness and sense of well-being as an employee, team member, and supervisor. Learn the steps to holding productive conversations and establishing an internal quiet confidence no matter the situation.



SLA Contributed Content

Education Sessions

Algorithm Bias: Detection and Perspectives of Undergraduate Students

Auto Tagging Documents Using the ICS-10, CPT and HCPCS Code Sets in All Document Types

Beyond the Impact Factor: How Do You Show Success Beyond a Single Number?

Biomedical and Life Sciences Community: Vendor Roundtable

Book Discussions in Your Medical Library: How to Enhance Outreach Through Books

Census Data for Research: Learn About the Census and the American Community Survey

Cybercrime and Information Content: The Role of the Information Professional

Data Literacy for Info Pros

Develop a Product Dashboard That Tracks Relevant Literature (Patent and Non-Patent) to the Product

Digital Tools to Empower Your Collections Strategy (and Stretch Your Budget)

Equity and Leadership in Specialized Libraries

How Do You Engage Reluctant or Hard-to-Reach Users?

How to Make Research Data Available and Ensure Compliance with the OSTP Memo

Impact of Changing Diagnostic Nomenclature for Mental Disorders on Taxonomy Maintenance and Information Retrieval

Information Leadership in 2030: What's Next for Info Pros

Introduction to Knowledge Graphs

"Kill a Stupid Rule" for Process Improvement, Transparency Across Functions and Engagement on Your Team

Leveraging User Data to Increase and Improve Engagement

Maintaining and Managing a Changing Taxonomy: Taxonomy Governance Fundamentals

Mindfulness and Mental Health Improvement Practices for an Effective Work-Life Balance in Librarianship

Moving Beyond Checklists: Centering the Importance of Onboarding

Negotiating for the Information Professional: A Case Study

New Day, New Project: Juggling Multiple Projects in the Information Field

Panel Discussion: Advanced Taxonomy Issues: The Response of Controlled Vocabularies to the Evolving Domains of Health and Healthcare

Power of Collaboration in Special Libraries of Asia

Researching Information for Smart Cities and Global Sustainable Growth in Communities

Sci-Tech 101: Introduction to Publication Metrics

SEC Documents: How to Read Some Common Forms and How to Get the Most Information from Them

Service-Learning Projects Complement Evidence-Based Educational Programs That Build Resilience to Health Misinformation in Academic and Community Settings

Solo Corporate Librarian Success Stories

Standards Update: What's New with Standards?

Strategizing for Leadership in the Information Field

Successful Info Pros in a Data-Driven Enterprise

Sustainable Mobility

The Breakfast Club: Leveraging Cross-Disciplinary Expertise to Create Strong Interprofessional Teams

The Future of Faculty OER Outreach

The New Rules for Job Searching in the Information Field

The Transformational Technology of Search

The Wonderfully Complicated World of Standards: An Open Discussion for Information Professionals on the Ins and Outs of Standards Management

Top Ten Tips for Running a STEM Library: Both Evergreen and Evolving

Unique Teaching Ventures: Making Inroads in New Areas

Using Digital Badging and Micro-Learning to Prepare Students for the Informed Workplace

Using Social Media to Manage Your Career

Welcome to the Endemic: Librarianship in a Post-Pandemic World

What are Publishers' Favorite OA Success Stories?

What Info Pros Want R&D Scientists to Know

What's New and Exciting in Health Data Privacy Law

When Industrial Standards Become Law: The Use of Incorporation by Reference in Federal and State Regulations

Contributed Papers

Piloting a Buddy Program for New Hires

Mentoring Health Science Library Students: Practices and Perceptions from a Regional Program

Chaos is a Friend of Mine: Creating and Planning Services for a New Medical library Space

In This Together: Challenges and Opportunities for Collaborative Health Sciences Collection Development

Waste Not, Want Not: Exposing the Secret Fragments of History in a Medical Rare Book Collection

Impact of the Reference Manager Software Zotero on Library Users: A Study

Why We Need to Re-Write the History of Medicine (and Other Things), and How Librarians and Archivists Can Help

Identifying Infodiversity Knowledge Practices in an Infodemic Era:

Rediscovering the Professional Identities of LIS Professionals

Library Funding and Sustenance: A Case Study of India

Team-Building and Leadership Development with Action Learning



Looking back,

forging ahead

MLA | SLA '23

Detroit | May 16-19 | Hybrid | #MLASLA23

**REGISTER
NOW!**