

HOW YOU CAN SUPPORT THE NATIONAL LIBRARY OF MEDICINE

1

Understand NLM's work providing 200+ biomedical databases



Free, trustworthy health information for the public.

medlineplus.gov



The home page of research for health professionals.

pubmed.gov



Free public access to federally-funded research.

ncbi.nlm.nih.gov/pmc



World's largest clinical trial registry and results database.

clinicaltrials.gov



Connecting genomic data with clinical information.

ncbi.nlm.nih.gov/gap

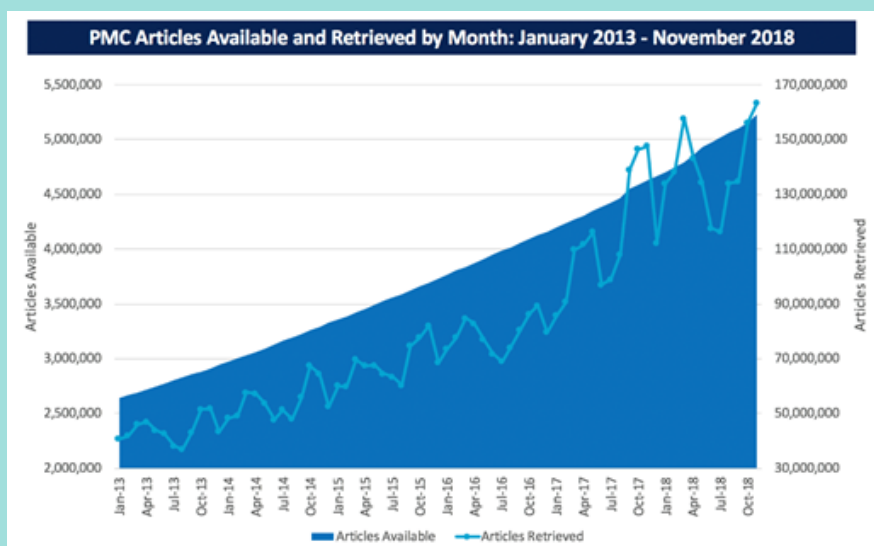


A national network of locally-relevant health information.

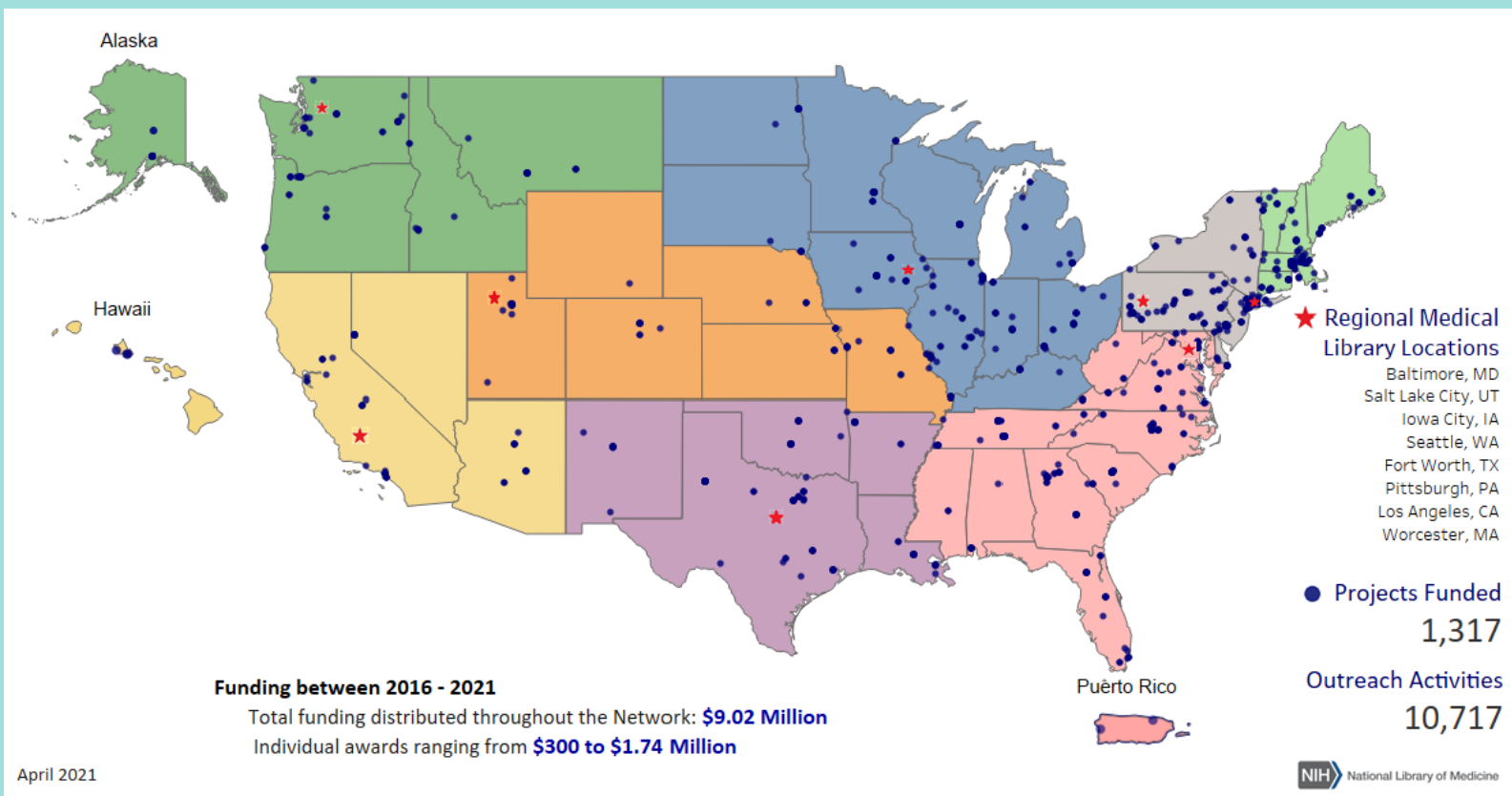
nmlm.gov

2

Recognize NLM's local, regional, and national impact



Accelerate scientific discovery and innovation by supporting public access legislation.



Empower and improve the health outcomes in your community by funding NLM training and outreach programs.

3 Support NLM's **mission** to improve global health through data-driven discovery and information access.

+ Increase NLM funding levels to at least **\$475 million** in Fiscal Year 2022, a 3% increase.

+ Increase NIH funding levels to at least **\$46.1 billion** in Fiscal Year 2022, a 7.4% increase, including dedicated funding provided to the NIH through the 21st Century Cures Act.

SUPPORT THE NATIONAL LIBRARY OF MEDICINE TODAY!

April 2021

Prepared by the Joint MLA/AAHSL Legislative Committee

For further information, contact Mary M. Langman at (312) 419-9094, ext. 27

The National Library of Medicine: A Platform for Biomedical Discovery and Data-Powered Health

The **National Library of Medicine (NLM)** plays an essential role in catalyzing biomedical and health data science and discovery through its cutting-edge research, information resources, collections, and training programs. NLM acquires, organizes, curates, and delivers up-to-date biomedical data and information across the United States and around the globe. Every day, millions of people use NLM's online information resources. The National Library of Medicine:

- Pioneers new ways to make biomedical data and information more accessible, supporting scientific discovery and the translation of research into new treatments, products, and practices;
- Builds tools that contribute to evidenced-based health care delivery and public health decision making; and
- Provides an information infrastructure for disaster and emergency preparedness and response.

In partnership with other parts of the National Institutes of Health (NIH) and other federal agencies, NLM is a key link in the chain that translates biomedical research into practice, making the results of research readily available worldwide.

Because NLM is an investment in good health; because its resources serve the public, health care providers, and researchers; and because NLM's research and information resources are critical in the response to the COVID-19 pandemic, **the Medical Library Association and Association of Academic Health Sciences Libraries urge Congress to:**

- Increase funding levels to at least \$475 million (+\$12.9 million), a 3% increase for NLM in FY 2022
- Increase NIH funding levels to at least \$46.1 billion (+\$3.2 billion), a 7.4% increase, including dedicated funding provided through the 21st Century Cures Act.

***The Medical Library Association** is a nonprofit, educational organization with 3,500 health sciences information professional members worldwide. Founded in 1898, MLA provides lifelong educational opportunities, supports a knowledgebase of health information research, and works with a global network of partners to promote the importance of quality information for improved health to the health care community and the public.*

***The Association of Academic Health Sciences Libraries** supports academic health sciences libraries and directors in advancing the patient care, research, education, and community service missions of academic health centers through visionary executive leadership and expertise in health information, scholarly communication, and knowledge management.*

Key NLM Resources Serving the Public, Health Care Providers, and Researchers:

NLM develops and makes a diverse set of **databases and online services freely available** through libraries and to anyone with Internet access. These resources support health care, public health, disease prevention and wellness, biomedical research, and innovation and are available through www.nlm.nih.gov.

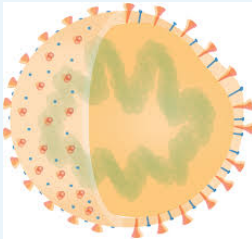
NLM Resource	Key Statistic	Highlights
 www.medlineplus.gov	Almost 870 million page views from 370 million users annually	<ul style="list-style-type: none"> • Gateway to trustworthy health information on the internet. • More than 1,000 health topics in English, Spanish, and 45 other languages.
 www.ncbi.nlm.nih.gov/pubmed	More than 32 million journal citations	<ul style="list-style-type: none"> • The most frequently used online scientific medical resource in the world. • Visited by 3.3 million users each day.
 www.ncbi.nlm.nih.gov/pmc	Free access to 6.8 million full-text articles	<ul style="list-style-type: none"> • More than 3.5 million users every day. • Supports the congressionally-mandated NIH public access policy and the public access policies of 10 other federal agencies, making more than 1.2 million articles available since 2008.
 www.nnlm.gov	8,000+ organizational members in communities nationwide	<ul style="list-style-type: none"> • With more than 60% of NNLM members serving underserved communities, this network provides a trusted local platform for health information outreach and engagement. • Provides health information training, raises awareness about the importance of health research, and improves health literacy of local communities.
 www.clinicaltrials.gov	More than 370,000 clinical studies in all 50 states and in 219 countries	<ul style="list-style-type: none"> • World's largest clinical trial registry and results database, including results for more than 48,000 studies. • More than 158,000 different users each day.
 www.ncbi.nlm.nih.gov/gap	More than 1,700 studies involving more than 2.8 million people	<ul style="list-style-type: none"> • Connects genomic data with clinical information, revealing the potential impact of genetics on health. • Over 68,000 requests for access to data approved.

National Library of Medicine

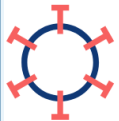
Novel Coronavirus (COVID-19) Response

Support for Researchers, Clinicians, and Public Health Officials

From the beginning, the National Library of Medicine (NLM) has been at the forefront of providing people with information on COVID-19. Our frontline healthcare providers use NLM's databases to access the latest research datasets, literature publications, and scientific information about COVID-19.

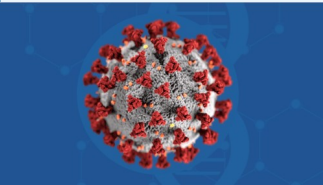


LitCovid: NLM created LitCovid, which is a curated literature hub for tracking up-to-date scientific information about COVID-19. Watch [this video](#) to learn how LitCovid works and the types of information it is collecting.



CORD-19

COVID-19 Open Research Dataset: NLM collaborated with leading research groups and the Allen Institute for AI to create CORD-19, a free resource of more than 280,000 scholarly articles about the novel coronavirus. CORD-19 represents the most extensive machine-readable coronavirus literature collection available for text mining to date.



NCBI SARS-CoV-2 Resources: NLM has created a portal of literature, gene sequence data, and clinical resources related to the virus that causes COVID-19. This portal includes links to:

- Nearly 500,000 runs of sequence read archive data
- More than 150,000 nucleotide records
- More than 5,000 clinical trials records
- More than 100,000 PubMed article records
- More than 100,000 free articles through PubMed Central.

DEI @ NLM:

Advancing Health Equity through Information

Support for Researchers, Clinicians, and Public Health Officials

The National Library of Medicine supports NIH efforts to close the gap in health disparities and improve the diversity of the biomedical information science workforce.



Open Access to Scientific Literature: PubMed & PubMed Central make scientific literature accessible, leading to biological discoveries and providing the foundation to developing clinical guidelines that inform health care. Includes resources like a [PubMed Special Query](#) for Health Disparities & Minority Health Information Resources.



Network of the National Library of Medicine: provides equal access to biomedical information and improves the public's access to information. Supports events like the recent DEI webinar series "[Nine Conversations that Matter to Health Sciences Librarians](#)" as well as [NNLM Reading Clubs](#) on Disability Health, LGBTQ Health, Racism and Health, and Diversity in Medicine.

Grants and Funding

Grant Programs: NLM funds research to advance health equity:

- NLM Information Resource Grants to Reduce Health Disparities
- Research Supplements to Promote Diversity in Health Research
- Leveraging Health Information Technology to Address Minority Health and Health Disparities



Annual NLM Science, Technology, and Society lecture series: raises awareness and spark conversations about the intersection of society and ethical considerations in biomedical research and technology.